

PRODUCT DATASHEET

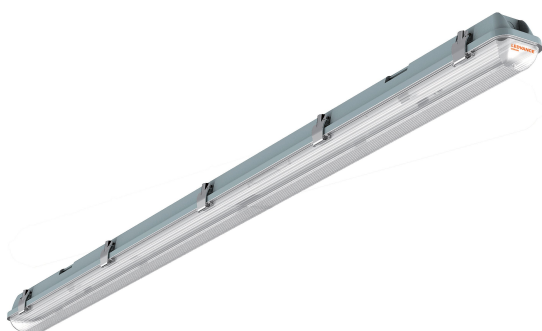
DAMP PROOF LED PRO 1300 20 W 6500 K

Standalone

LEDVANCE DAMP PROOF LED | LED damp-proof luminaires

Areas of application

- Direct replacement of conventional 1200 mm T8 damp proof luminaires
- Industrial and storage facilities
- Production and assembly facilities
- Airports, stations
- Train stations
- Car parks
- Supermarkets
- Difficult application conditions with humidity or dust



Product benefits

- Anodized anti-corrosion aluminum base plate
- Highly reflective base plate for improved heat dissipation and system efficiency
- UV-stable prismatic diffusor made of polycarbonate
- Prismatic diffusor for even light distribution and high efficiency
- Stainless steel clips
- Five clips on each side ensure IP65 rating throughout the luminaire lifetime
- Versions for through wiring or standalone operation available
- High efficiency and reliability

Product features

- 20 W and 40 W version available
- High luminous efficacy: 100 lm/W
- Available with color temperature: 4,000 K, 6,500 K



- Color rendering index R_a : ≥ 80
- Impact resistance: IK08
- Power factor: > 0.95
- Long lifetime: up to 30,000 h
- CCC marked, CB test certificate

TECHNICAL DATA

Electrical data

Nominal wattage	20.00 W
Nominal voltage	220...240 V
Mains frequency	50...60 Hz
Power factor λ	0.95
Protection class	II

Photometrical data

Luminous flux	2000 lm
Luminous efficacy	100 lm/W
Color temperature	6500 K
Light color (designation)	Daylight
Color rendering index Ra	80
Standard deviation of color matching	≤6 sdcm
Photobiological safety group acc. to EN62778	RG1
Beam angle	120 °

Dimensions & Weight

Length	1270.00 mm
Width	85.00 mm
Height	80.00 mm
Product weight	1290.00 g

Materials & Colors

Product color	Gray
Housing color	Gray
Body material	Acrylonitrile butadiene styrene (ABS)
Cover material	Polycarbonate (PC)
Mercury content	0.0 mg

Application & Mounting

Ambient temperature range	-10...+40 °C
Temperature range at storage	-20...+70 °C
Type of connection	Cable/Connector
Type of protection	IP65

Protection class IK (shock resistance)	IK08
Dimmable	No
Mounting type	Surface
Mounting location	Ceiling / Wall
Application environment	Indoor

Lifespan

Lifespan L70/B50 at 25 °C	30000 h ¹⁾
Number of switching cycles	15000

¹⁾ t[h]: L70 / B50 @ 25 °C (Ta), t[h]: L80 / B10 @ 25 °C (Ta), t[h]: L90 / B10 @ 25 °C (Ta)


Certificates & Standards

Replaceable light source (EPREL)	Not replaceable
----------------------------------	-----------------

EQUIPMENT / ACCESSORIES

– Optional battery pack available

DOWNLOAD DATA

Documents and certificates		Document name
	User instruction / safety instructions	DAMPPROOF PRO LED12 20W U

LOGISTICAL DATA

Product code	Packaging unit (Pieces/Unit)	Dimensions (length x width x height)	Gross weight	Volume
4058075003422	BAG 1	1,266 mm x 80 mm x 74 mm	1409.00 g	7.49 dm ³
4058075003439	Shipping box 8	1,300 mm x 330 mm x 205 mm	12839.00 g	87.95 dm ³

The mentioned product code describes the smallest quantity unit which can be ordered. One shipping unit can contain one or more single products. When placing an order, for the quantity please enter single or multiples of a shipping unit.

DISCLAIMER

Subject to change without notice. Errors and omission excepted. Always make sure to use the most recent release.