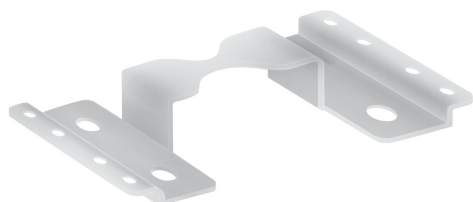


# PRODUCT DATASHEET

## LN INDV Lightline Connector

LINEAR IndiviLED® LIGHT LINE CONNECTOR | Mechanical connector for light line installation



PERFOR-  
MANCE  
CLASS

---

### Product benefits

- Easy and quick connection of luminaires for light line installations
- Very solid connector for long operation

---

### Product features

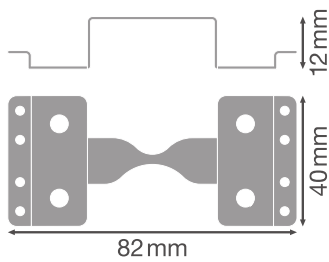
- Mechanical H connector made of steel with screws for light line connection



## TECHNICAL DATA

## Dimensions &amp; Weight

Length	82 mm
Width	40 mm
Height	12 mm
Product weight	23.00 g



LN INDV LIGHTLINE CONNECTOR

## Materials &amp; Colors

Product color	Steel
Body material	Steel


## Application &amp; Mounting

Replaceable light source	No
--------------------------	----

## Certificates &amp; Standards

Ball shot safe	No
----------------	----

## DOWNLOAD DATA

Tender texts	Document name
 Tender documents	LINEAR IndiviLED LIGHT LINE CONNECTOR Lightline Connector-EN

## LOGISTICAL DATA

Product code	Packaging unit (Pieces/Unit)	Dimensions (length x width x height)	Gross weight	Volume
--------------	------------------------------	--------------------------------------	--------------	--------

Product code	Packaging unit (Pieces/Unit)	Dimensions (length x width x height)	Gross weight	Volume
4058075133341	BAG 1	130 mm x 90 mm x 20 mm	28.00 g	0.23 dm <sup>3</sup>
4058075133358	Bag for 2nd level 4			
4058075173866	Shipping box 240	210 mm x 300 mm x 170 mm	7591.00 g	10.71 dm <sup>3</sup>

The mentioned product code describes the smallest quantity unit which can be ordered. One shipping unit can contain one or more single products. When placing an order, for the quantity please enter single or multiples of a shipping unit.

DISCLAIMER

Subject to change without notice. Errors and omission excepted. Always make sure to use the most recent release.