

PRODUCT DATASHEET

CONNECTOR BOX 5POLE L/N/E/D+/D- 4x

CONNECTOR BOX | Connector boxes for recessed luminaires



Product benefits

- Tool-free electrical connection due to push button connector
- Through-wiring possible with included connector box

Product features

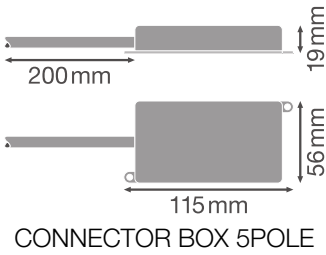
- 5 pole push terminal included
- Suitable for recessed On-/Off-luminaires of the electric class II (L/N version)
- Suitable for recessed DALI luminaires (L/N/E/D+/D-version)



TECHNICAL DATA

Dimensions & Weight

Length	115.0 mm
Width	56.0 mm
Height	19.0 mm
Product weight	60.00 g



Materials & Colors

Product color	White
---------------	-------





Application & Mounting

Replaceable light source	No
--------------------------	----

Additional product data

Product remark	Available from September 2025
----------------	-------------------------------

DOWNLOAD DATA

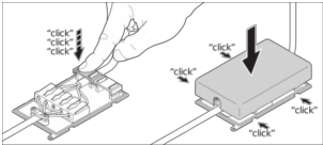
Documents and certificates		Document name
	Legal information	Informationstext 18 Abs 4 ElektroG
	Legal information	SAFETY INSERT G11246334
	Declarations of conformity	CONNECTOR BOX 5POLE L/N/E/D+/D- 4X
	Declarations of conformity UKCA	CONNECTOR BOX 5POLE L/N/E/D+/D- 4X

LOGISTICAL DATA

Product code	Packaging unit (Pieces/Unit)	Dimensions (length x width x height)	Gross weight	Volume
4058075691292	BAG 4	320 mm x 220 mm x 20 mm	244.00 g	1.41 dm ³
4058075691308	Shipping box 40	335 mm x 235 mm x 245 mm	2868.00 g	19.29 dm ³

The mentioned product code describes the smallest quantity unit which can be ordered. One shipping unit can contain one or more single products. When placing an order, for the quantity please enter single or multiples of a shipping unit.

ADDITIONAL CATALOG INFORMATION



References / Links

– For Guarantee see www.ledvance.com/guarantee

DISCLAIMER

Subject to change without notice. Errors and omission excepted. Always make sure to use the most recent release.