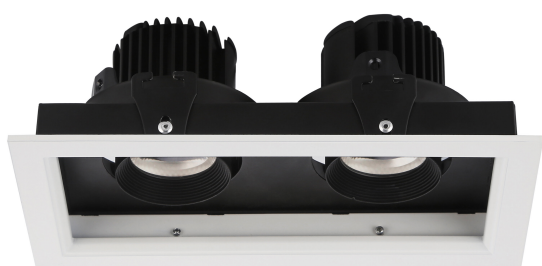


# PRODUCT DATASHEET

## LED GRILL SPOT LIGHT 2\*18 W 4000 K 15 °

LED GRILL SPOT LIGHT | LED spotlight luminaires



### Areas of application

- Shops, supermarkets
- Hotels, restaurants

### Product benefits

- High power COB LED provides high lumen output in compact housing
- Low flicker light thanks to special electronic control gear
- Good color rendering for the best product presentation

### Product features

- Rotation angle luminaire head (horizontal): 350°, swiveling (vertical): ±25°
- Single or double light outlet
- Color rendering index  $R_a$ : > 90
- Power factor: > 0.9
- Initial color consistency: < 5 SDCM
- Type of protection: IP20
- Lifetime (L70/B50): up to 30,000 h
- CCC marked, CB test certificate
- Follows the unified LEDVANCE design language (SCALE design)



TECHNICAL DATA

Electrical data

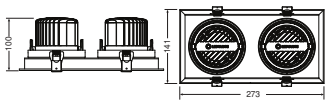
Nominal wattage	2*18 W
Nominal voltage	220...240 V
Mains frequency	50...60 Hz
Power factor $\lambda$	0.90
Protection class	II
Operating mode	LED DRIVER

Photometrical data

Luminous flux	2800 lm
Luminous efficacy	77 lm/W
Color temperature	4000 K
Light color (designation)	Cool White
Color rendering index Ra	$\geq 90$
Standard deviation of color matching	5 sdcm
Beam angle	15 °

Dimensions & Weight

Length	273.00 mm
Width	141.00 mm
Height	100.00 mm
Product weight	1210.00 g



LDPFM GRILLSPOT 2x18W

Materials & Colors

Product color	White
Housing color	White
Body material	Aluminum
Cover material	Polymethylmethacrylate (PMMA)

Mercury content	0.0 mg
-----------------	--------

Application & Mounting

Ambient temperature range	-20...+40 °C
Temperature range at storage	-20...+70 °C
Type of connection	WAGO
Type of protection	IP20
Dimmable	No
Mounting type	Recessed
Mounting location	Ceiling
Application environment	Indoor
Mounting length	260,0 mm
Mounting width	131 mm
Replaceable light source	No

Lifespan


Lifespan L70/B50 at 25 °C	30000 h <sup>1)</sup>
Number of switching cycles	30000

1) t[h]: L70 / B50 @ 25 °C (Ta), t[h]: L80 / B10 @ 25 °C (Ta), t[h]: L90 / B10 @ 25 °C (Ta)

Certificates & Standards

Replaceable light source (EPREL)	Not replaceable
----------------------------------	-----------------

DOWNLOAD DATA

Photometric and lighting design files		Document name
	IES file (IES)	LDPFM-Grillspot-18W whtie 940 15D

LOGISTICAL DATA

Product code	Packaging unit (Pieces/Unit)	Dimensions (length x width x height)	Gross weight	Volume
4058075252240	Folding box 1	315 mm x 180 mm x 125 mm	1373.00 g	7.09 dm³
4058075252257	Shipping box 6	560 mm x 335 mm x 270 mm	9228.00 g	50.65 dm³

The mentioned product code describes the smallest quantity unit which can be ordered. One shipping unit can contain one or more single products. When placing an order, for the quantity please enter single or multiples of a shipping unit.

---

## DISCLAIMER

Subject to change without notice. Errors and omission excepted. Always make sure to use the most recent release.