

## PRODUCT DATASHEET

### PTi 150/220...240 S

POWERTRONIC® INTELLIGENT PTi S | ECG for HID lamps, for installation in luminaires



#### Areas of application

- Shop lighting
- Health and fitness areas (in luminaires with protection class IP66 or higher)
- Effect and accent lighting

#### Product benefits

- Long reliable life at maximum permitted temperatures
- Compact dimensions and low weight for small luminaire designs
- Excellent thermal behavior for very high limit temperatures  $t_c$  and  $t_a$
- Automatic safety shutdown of lamps in the event of a defect or at end of life (EoL)

#### Product features

- Energy Efficiency Index EEI: A2
- Supply voltage: 220...240 V
- Line frequency: 50...60 Hz
- RI suppression: to EN 55015/CISPR 15
- Safety: to EN 61347-2-12

- Line harmonics according to EN 61000-3-2
- Immunity according to EN 61547

TECHNICAL DATA

Electrical data

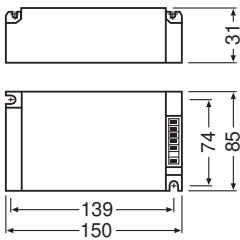
Nominal wattage	160.00 W
Nominal voltage	220...240 V
Nominal output voltage	250 V
Input voltage AC	198...254 V
U-OUT (working voltage)	250 V
Type of current	AC
Inrush current	70 A <sup>1)</sup>
Mains frequency	50/60 Hz
Power factor $\lambda$	0.95 <sup>2)</sup>
ECG efficiency	92 %
Max. ECG no. on circuit breaker 10 A (B)	4 <sup>3)</sup>
Max. ECG no. on circuit breaker 16 A (B)	7 <sup>3)</sup>
Operating frequency	0.165 kHz

1)  $t_{width} = 250 \mu s$  (measured at 50 %  $i_{peak}$ )

2) Minimum

3) Type B

Dimensions & Weight



Length	150.00 mm
Mounting hole spacing, length	139,0 mm
Width	85.00 mm
Height	31.00 mm
Cable cross-section, input side	0,5...2,5 mm <sup>2</sup>
Cable cross-section, output side	0,5...2,5 mm <sup>2</sup>

Wire preparation length, input side	10...11 mm
Wire preparation length, output side	10...11 mm
Product weight	370.00 g

### Colors & materials

Casing material	Metal
Body material	Metal

### Temperatures & operating conditions

Ambient temperature range	-25...+55 °C
Maximum temperature at tc test point	85 °C
Max.housing temperature in case of fault	110 °C
Permitted rel. humidity during operation	5...85 % <sup>1)</sup>

<sup>1)</sup> Maximum 56 days/year at 85 %

### Lifespan

ECG lifetime	40000 h <sup>1)</sup>
--------------	-----------------------

<sup>1)</sup> At maximum T<sub>c</sub> / 10% failure rate

### Capabilities

Dimmable	No
Overheating protection	Power reduction and switch off at T > 85 °C at the tc point
Max. cable length to lamp/LED module	1,5 m
Suitable for fixtures with prot. class	I
Suitable for emergency lighting	No

### Certificates & Standards

Approval marks – approval	ENEC 10 / VDE / VDE-EMC / EAC / C-Tick
Standards	Acc. to EN 61347-2-12 / Acc. to EN 55015 / Acc. to EN 61000-3-2 / Acc. to EN 61547
Protection class	I
Type of protection	IP20
Energy efficiency class	A2
EEI – Energy Label	A2

### LOGISTICAL DATA

Temperature range at storage	-40...+85 °C
------------------------------	--------------

## Safety advice

Ballast losses and lamp heat radiation can lead to heat accumulation in a completely closed case. Therefore it is necessary to ensure that the temperature at the measuring point t of the ECG does not exceed the maximum value.

### Attention!









For safety reasons disconnect the device before replacing the lamp!

Any conductive material must have a minimum distance of 4 mm to the front of the terminal block.

Installation by qualified electrician only.

Terminals for protective earth not suitable for any through connection.

## DOWNLOAD DATA

Documents and certificates		Document name
	User instruction / safety instructions	334206_Technical guide - POWERTRONIC for HID-lamps (GB)
	User instruction / safety instructions	590729_EAC - PTi S / PT-FIT S
	Declarations of conformity	339884_Tender Document for POWERTRONIC EVG.eng
	Declarations of conformity	EU Declaration of Conformity 3363432
	Declarations of conformity	VD EMC Certificate 40025469
	Certificates	VDE ENEC Certificate 40035813
	Certificates	554891_EAC PT family
CAD/BIM files		Document name
	CAD data 3D PDF	315657_PTi 100/150 S ASSEMBLY 9900047

## LOGISTICAL DATA

Product code	Packaging unit (Pieces/Unit)	Dimensions (length x width x height)	Gross weight	Volume
4008321188090	Unpacked 1	150 mm x 93 mm x 42 mm	370.50 g	0.59 dm <sup>3</sup>
4008321188106	Shipping box 20	403 mm x 191 mm x 205 mm	8011.00 g	15.78 dm <sup>3</sup>

The mentioned product code describes the smallest quantity unit which can be ordered. One shipping unit can contain one or more single products. When placing an order, for the quantity please enter single or multiples of a shipping unit.

---

## DISCLAIMER

Subject to change without notice. Errors and omission excepted. Always make sure to use the most recent release.