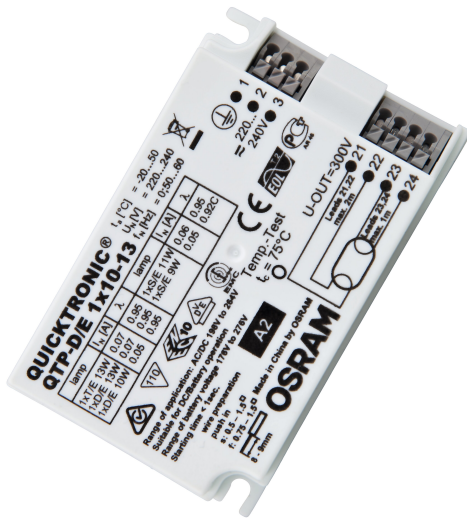


## PRODUCT DATASHEET

### QTP-D/E 1X10...13

QUICKTRONIC® PROFESSIONAL M | ECG for CFL



#### Areas of application

- Emergency lighting systems acc. to EN 50172 / DIN VDE 0108-100
- Public buildings
- Sports halls and factories
- Suitable for luminaires of protection class I

#### Product benefits

- Long lamp life
- No adverse effect from frequent on/off switching
- Automatic restart after lamp replacement
- Perfect lamp start for applications with motion sensors
- Separate installations thanks to optional cable clamp for K2 and K3 casings
- VDE/VDE EMC certified system

#### Product features

- Supply voltage: 220...240 V
- Line voltage: 198...264 V
- Line frequency: 0 Hz | 50 Hz | 60 Hz
- Lamp start with optimum filament preheating

- Energy Efficiency Index EEI: A2
- Automatic shutdown of defective lamps and at end of life (EoL T.2)
- Lamp operation: to EN 60929
- Safety: to EN 61347-2-3

TECHNICAL DATA

Electrical data

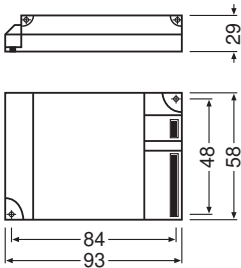
Nominal wattage	16.00 W
Nominal voltage	220...240 V
Nominal output voltage	300 V
Input voltage AC	198...264 V
Input voltage DC	176...276 V <sup>1)</sup>
U-OUT (working voltage)	300 V
Inrush current	7 A
Mains frequency	50/60 Hz <sup>2)</sup>
Max. ECG no. on circuit breaker 10 A (B)	25 <sup>3)</sup>
Max. ECG no. on circuit breaker 16 A (B)	41 <sup>3)</sup>
Operating frequency	44 kHz

- 1) Minimum voltage for lamp ignition: 198 V  
2) Approximately  
3) Type B

Light technical data

Starting time	1 s
---------------	-----

Dimensions & Weight



Length	93.00 mm
Mounting hole spacing, length	84,0 mm
Width	58.00 mm
Height	29.00 mm
Cable cross-section, input side	0.5...1.5 mm <sup>2</sup>

Cable cross-section, output side	0.5...1.5 mm <sup>2</sup>
Product weight	100.00 g

### Colors & materials

Casing material	Plastic
Body material	Plastic

### Temperatures & operating conditions

Ambient temperature range	-20...+50 °C
Maximum temperature at tc test point	75 °C
Max.housing temperature in case of fault	110 °C
Permitted rel. humidity during operation	5...85 % <sup>1)</sup>

<sup>1)</sup> Maximum 56 days/year at 85 %

### Lifespan

ECG lifetime	50000 h <sup>1)</sup>
--------------	-----------------------

<sup>1)</sup> At T<sub>case</sub> = 75°C at T<sub>c</sub> point / 10% failure rate

### Additional product data

Product remark	Optional cable clamp, see chapter ECG mountings - cable clamp
----------------	---

### Capabilities

Dimmable	No
Max. cable length to lamp/LED module	2.0 m / 1.0 m
Suitable for fixtures with prot. class	I / II
End of lamp life safety shutdown	EOL T.2








### Certificates & Standards

Approval marks – approval	VDE / VDE-EMC / ENEC 10 / GOST / RCM
Standards	Acc. to EN 61347-2-3 / Acc. to EN 60929 / Acc. to EN 55015:2006 + A1:2007 / Acc. to EN 61000-3-2 / Acc. to EN 61547
Protection class	I/II
Type of protection	IP20
Energy efficiency class	A3
EEL – Energy Label	A2

## LOGISTICAL DATA

Temperature range at storage	-40...+85 °C
------------------------------	--------------

## DOWNLOAD DATA

Documents and certificates		Document name
	User instruction / safety instructions	596657_EAC QTP-D/E + QTP-T/E
	Declarations of conformity	339525_Declaration of Conformity (GB)
	Certificates	334954_ENEC-Marks approval
	Certificates	335169_Manufacturer's declaration – Lamp/ECG combinations: Frequent switching
	Certificates	504181_VDE-EMC-Certificate QTP DL_TE
	Certificates	335097_INOTEC
CAD/BIM files		Document name
	CAD data 3D PDF	313399_93x58x29 9900039

## LOGISTICAL DATA

Product code	Packaging unit (Pieces/Unit)	Dimensions (length x width x height)	Gross weight	Volume
4008321181572	Unpacked 1		100.00 g	
4008321181589	Shipping box 20	315 mm x 196 mm x 66 mm	2127.00 g	4.07 dm <sup>3</sup>

The mentioned product code describes the smallest quantity unit which can be ordered. One shipping unit can contain one or more single products. When placing an order, for the quantity please enter single or multiples of a shipping unit.

## DISCLAIMER

Subject to change without notice. Errors and omission excepted. Always make sure to use the most recent release.