

## PRODUCT DATASHEET

### HQI-TS 150 W/D

POWERSTAR HQI®-TS EXCELLENCE | Metal halide lamps with quartz technology for enclosed luminaires



#### Areas of application

- Shop interiors, shop windows
- Shopping arcades
- Foyers, reception areas
- Buildings, monuments, bridges
- Museums, exhibitions
- Exhibition halls and trade fairs
- Pedestrian zones, public squares
- Parks and gardens
- Approved only for use in enclosed luminaires
- Outdoor applications only in suitable luminaires

#### Product benefits

- High efficiency
- Uniform distribution of light
- Good to excellent color rendering
- Hot restrike capable
- UV values significantly below the maximum permitted thresholds to IEC 61167 thanks to UV filter

#### Product features

- POWERSTAR® quartz technology
- Light colors: warm white (WDL), neutral white (NDL), daylight (D), cool daylight (CD)



TECHNICAL DATA

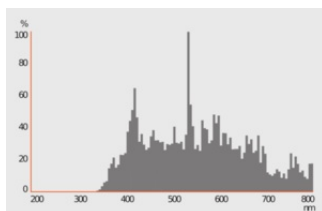
Electrical data

Nominal wattage	150 W
Construction wattage	156.60 W
Nominal voltage	100 V
Ignition voltage	13.3 kVp <sup>1)</sup>
Operating mode	Conventional control gear (CCG) and ignitor, Electronic control gear (ECG)
Nominal current	1.8 A
PFC capacitor at 50 Hz	20 µF

1) Minimum / Maximum

Photometrical data

Luminous flux	13000 lm
Luminous efficacy	83 lm/W
Color temperature	5450 K
Color rendering index Ra	≤ 81
Light color	854
Rated LLMF at 2,000 h	0.86
Rated LLMF at 4,000 h	0.84
Rated LLMF at 6,000 h	0.77
Rated LLMF at 8,000 h	0.74
Rated LLMF at 12,000 h	0.70
UV protection	Yes



384072\_HQI\_TS\_D

Dimensions & Weight

Overall length	135.00 mm
Light center length (LCL)	66.00 mm
Diameter	23 mm
Product weight	22.00 g

### Temperatures & operating conditions

Maximum permitted outer bulb temperature	450 °C
Maximum permitted pinch temperature	350 °C

### Lifespan

Rated lamp survival factor at 2,000 h	0.95
Rated lamp survival factor at 4,000 h	0.90
Rated lamp survival factor at 6,000 h	0.85
Rated lamp survival factor at 8,000 h	0.80
Rated lamp survival factor at 12,000 h	0.50
Lifespan B50	12000 h

### Additional product data

Base (standard designation)	RX7s-24
Mercury content	13.0 mg
Design / version	Clear

### Capabilities

Dimmable	No
Burning position	P45
Enclosed luminaire required	Yes
Hot restart	Yes

### Certificates & Standards

Energy efficiency class	G
Energy consumption	157.00 kWh/1000h

### Country-specific categorizations

ILCOS	MD/UB-150/856-H/E/SL-RX7s=24-23/135/H
Order reference	HQI-TS 150W/D/E

### Energy labelling regulation data acc EU 2019/2015





Lighting technology used	MH
--------------------------	----


Non-directional or directional	NDLS
Mains or non-mains	NMLS
Light source cap-type (or other electric interface)	RX7s-24
Connected light source (CLS)	No
Color-tuneable light source	No
Envelope	SECOND
High luminance light source	No
Anti-glare shield	No
Correlated colour temperature type	SINGLE_VALUE
Claim of equivalent power	No
Length	135.00 mm
Height	23 mm
Width	23 mm
Chromaticity coordinate x	0,335
Chromaticity coordinate y	0,348
Beam angle correspondence	SPHERE_360
EPREL ID	546550
Model number	AC34324

### Safety advice

- Do not stare at the operating light source: The luminaire should be positioned so that prolonged staring into the luminaire at a distance closer than 4 m is not expected.
- Disconnect mains before installation.
- Must not be used if outer bulb is defective.
- Lamp to be used only in a closed luminaire.

### DOWNLOAD DATA

	Documents and certificates	Document name
	User instruction / safety instructions	High Intensity Discharge Lamp UI
	Declarations of conformity	EC Declaration of Conformity - 2021 9C1-4072118-EN-12 - HQI
	Certificates	EAC RU C-DE.AYA46.B.16106_20 13.10.2020-12.10.2025 Rostest-Moskva - MH double capped
	Certificates	EAC N RU D-DE.MU62.B.00932_20 06.03.2020-05.03.2025 Prommash Test - MH

Photometric and lighting design files		Document name
	Spectral power distribution	384072_HQL_TS_D

**LOGISTICAL DATA**

Product code	Packaging unit (Pieces/Unit)	Dimensions (length x width x height)	Gross weight	Volume
4008321678409	Folding box 1	35 mm x 35 mm x 141 mm	32.00 g	0.17 dm <sup>3</sup>
4008321678416	Shipping box 12	149 mm x 116 mm x 154 mm	498.00 g	2.66 dm <sup>3</sup>

The mentioned product code describes the smallest quantity unit which can be ordered. One shipping unit can contain one or more single products. When placing an order, for the quantity please enter single or multiples of a shipping unit.

**DISCLAIMER**

Subject to change without notice. Errors and omission excepted. Always make sure to use the most recent release.