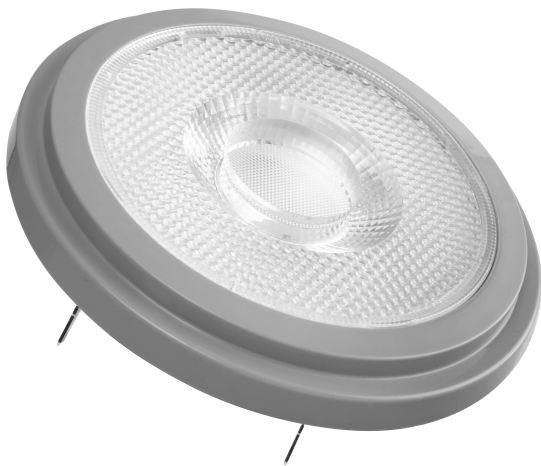




PRODUCT DATASHEET

LED PRO AR111 100 24° P 13.5W 927 G53

PARATHOM® PRO AR111 | Low-voltage LED reflector lamps AR111 with retrofit pin base



Areas of application

- Shops and exhibition rooms
- Domestic applications
- Commercial applications
- Accent lighting
- Outdoor use in suitable outdoor luminaires only

Product benefits

- Quick, simple and safe replacement without rewiring
- Design, dimensions, luminous flux comparable to an incandescent or halogen lamp
- Low maintenance costs thanks to long lifetime
- No UV and near-IR radiation in the light beam
- Stepless dimming
- Very high dimmer compatibility, see also www.ledvance.com/dim
- Compatible with many common conventional and electronic control gears (see also compatibility list)
- Instant 100 % light, no warm-up time
- Lower energy consumption than incandescent or halogen lamps

Product features

- LED alternative to low voltage halogen lamps
- High color consistency: ≤ 4 SDCM
- Dimmable
- Base: G53



- Excellent color rendering CRI > 97
- Lifetime up to 40,000 h

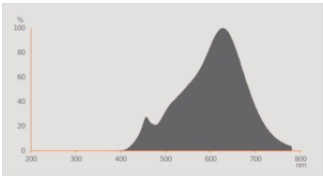
TECHNICAL DATA

Electrical data

Nominal wattage	13.5 W
Construction wattage	13.50 W
Nominal voltage	12 V
Claimed equiv. conventional lamp power	100 W
Nominal current	1.2 A
Type of current	AC
Inrush current	11 A
Operating frequency	50/60 Hz
Mains frequency	50/60 Hz
Max. lamp number on MCB B10 A	32
Max. lamp number on MCB B16 A	25
Power factor λ	0.90

Photometrical data

Luminous intensity	2500 cd
Luminous flux	950 lm
Nominal useful luminous flux 90°	950 lm
Luminous efficacy	70 lm/W
Lumen main.fact.at end of nom.life time	0.70
Light color (designation)	Warm White
Color temperature	2700 K
Color rendering index Ra	97
Light color	927
Standard deviation of color matching	≤4 sdcn
Rated peak intensity	2500 cd
Rated LLMF at 6,000 h	0.80

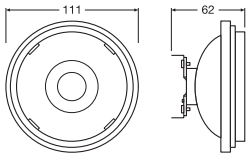


Everlight 67-23ST RKE 2700K

Light technical data

Beam angle	24 °
Warm-up time (60 %)	< 0.50 s
Starting time	< 0.5 s

Dimensions & Weight



Overall length	55.00 mm
Diameter	111.00 mm
Maximum diameter	111 mm
Product weight	135.00 g

Temperatures & operating conditions

Ambient temperature range	-20...+40 °C
Maximum temperature at tc test point	83 °C

Lifespan

Lifespan L70/B50 at 25 °C	40000 h
Number of switching cycles	100000
Lumen maintenance at end of service lifetime	0.70
Rated lamp survival factor at 6,000 h	≥ 0.90

Additional product data

Base (standard designation)	G53
Mercury content	0.0 mg
Mercury-free	Yes
Product remark	All technical parameters apply to the entire lamp / Due to the complex production process for light-emitting diodes, the typical values shown for the technical LED parameters are purely statistical values that do not necessarily match the actual technical parameters of each individual product, which can vary from the typical value

Capabilities

Dimmable	Yes
----------	-----

Certificates & Standards

Energy efficiency class	G ¹⁾
Energy consumption	14.00 kWh/1000h
Type of protection	IP20
Standards	CE / EAC / CB
Photobiological safety group acc. to EN62778	RG1

¹⁾ Energy efficiency class (EEC) on a scale of A (highest efficiency) to G (lowest efficiency)

Country-specific categorizations



Order reference	LPAR11110024 13
-----------------	-----------------

Energy labelling regulation data acc EU 2019/2015

Lighting technology used	LED
Non-directional or directional	DLS
Mains or non-mains	NMLS
Light source cap-type (or other electric interface)	G53
Connected light source (CLS)	No
Color-tuneable light source	No
Envelope	No
High luminance light source	No
Anti-glare shield	No
Correlated colour temperature type	SINGLE_VALUE
Claim of equivalent power	Yes
Length	55.00 mm
Height	111.00 mm
Width	111.00 mm
Chromaticity coordinate x	0.458
Chromaticity coordinate y	0.410
R9 Colour rendering index	1
Beam angle correspondence	NARROW_CONE_90
Survival factor	0.90
LED light source replaces a fluorescent light source	Yes
EPREL ID	522963

Model number	AC32794
--------------	---------

DOWNLOAD DATA

Documents and certificates		Document name
	Declarations of conformity	LED AR111 lamp
Photometric and lighting design files		Document name
	Spectral power distribution	Everlight 67-23ST RKE 2700K

LOGISTICAL DATA

Product code	Packaging unit (Pieces/Unit)	Dimensions (length x width x height)	Gross weight	Volume
4058075608474	Folding box 1	113 mm x 66 mm x 113 mm	191.00 g	0.84 dm ³
4058075608481	Shipping box 6	238 mm x 208 mm x 123 mm	1274.00 g	6.09 dm ³

The mentioned product code describes the smallest quantity unit which can be ordered. One shipping unit can contain one or more single products. When placing an order, for the quantity please enter single or multiples of a shipping unit.

References / Links

- For dimming conformity see www.ledvance.com/dim
- For Guarantee see www.ledvance.com/guarantee
- For further products and actual information concerning LED lamps see www.ledvance.com/ledlamps
- Further information see www.ledvance.com/low-voltage-ledlamps

DISCLAIMER

Subject to change without notice. Errors and omission excepted. Always make sure to use the most recent release.