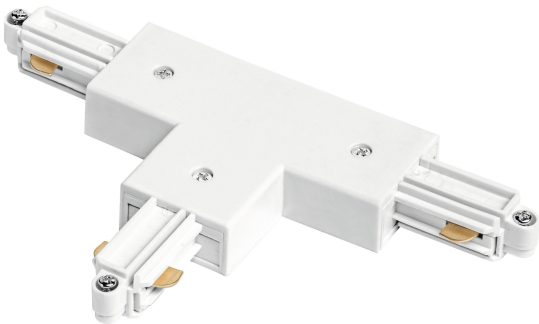


PRODUCT DATASHEET

Tracklight T Connector White

Tracklight accessories | Tracklight accessories



Areas of application

- Kitchens, living rooms, children's rooms or home offices
- Entrance areas

Product benefits

- Timeless elegant design
- High-quality materials

Product features

- Customisable modular tracklight system
- Accessories for tracklight system



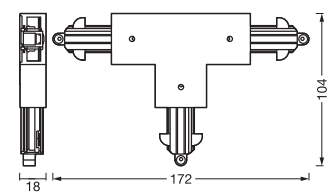
TECHNICAL DATA

Electrical data

Protection class	I
------------------	---

Dimensions & Weight

Length	172 mm
Width	104.00 mm
Height	18.00 mm
Product weight	98.00 g



TRACKLIGHT T CONNECTOR

Materials & Colors

Product color	White
Body material	Polycarbonate (PC)

Application & Mounting

Ambient temperature range	-20...+40 °C
Temperature range at storage	-20...+80 °C
Type of protection	IP20
Mounting location	Luminaire
Replaceable light source	No

Certificates & Standards




Standards	CE / UKCA
Ball shot safe	No

Safety advice

- All electrical connections must be made by a qualified person.
- Caution, risk of electric shock.

- Product in protection class I. All electrically conductive, metallic housing parts that can absorb voltage during operation or during maintenance in the event of a fault must be continuously connected to the protective earthing conductor.
- Check wall-ceiling for suitability. If uncertain, seek professional advice.

DOWNLOAD DATA

Documents and certificates		Document name
	User instruction / safety instructions	Tracklight T Connector
	Declarations of conformity	Tracklight T Connector
	Declarations of conformity UKCA	Tracklight T Connector

LOGISTICAL DATA

Product code	Packaging unit (Pieces/Unit)	Dimensions (length x width x height)	Gross weight	Volume
4099854631160	Folding box 1	22 mm x 130 mm x 160 mm	122.00 g	0.46 dm ³
4099854631177	Folding box 4	138 mm x 98 mm x 142 mm	542.00 g	1.92 dm ³
4099854631184	Shipping box 64	410 mm x 294 mm x 312 mm	9332.00 g	37.61 dm ³

The mentioned product code describes the smallest quantity unit which can be ordered. One shipping unit can contain one or more single products. When placing an order, for the quantity please enter single or multiples of a shipping unit.

DISCLAIMER

Subject to change without notice. Errors and omission excepted. Always make sure to use the most recent release.