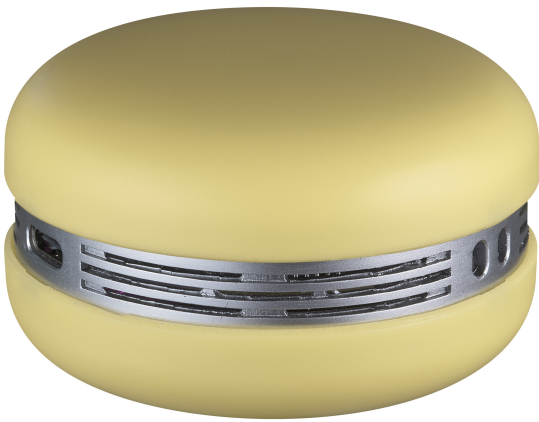


PRODUCT DATASHEET

Smart Macaron Yellow

SMART MACARON BLUETOOTH SPEAKER | Bluetooth Speaker with Gyroscope controlled lighting



Areas of application

- Perfect for indoor use – from cozy living rooms and elegant dining spaces to relaxing bedrooms

Product benefits

- Portable Bluetooth Speaker with a stylish macaron-inspired design
- Stereo Pairing – connect two units for immersive, left-right channel sound
- Alarm Mode – turn it into a portable alarm clock speaker
- Preloaded Music – includes white noise and baby-soothing melodies
- Energy Efficient – low power consumption for longer playtime
- Travel-Friendly – comes with a wrist strap and key ring loop for easy carrying

Product features

- Bluetooth Speaker – compatible with Spotify, YouTube, Apple Music, and other music apps
- Controllable via SMART+ App (with minimum Android 8.0 or iOS 14.0)
- RGB Lighting – adjust colors via physical rotation or the SMART+ App
- Extra Features – Stereo Mode, Baby Mode, Natural Mode, Alarm, Color Mode, Group Sync
- Battery Life – up to 3.3 hours with music and light on
- USB-C Charging – fast and convenient recharging
- Connectivity – Bluetooth network protocol



TECHNICAL DATA

Electrical data

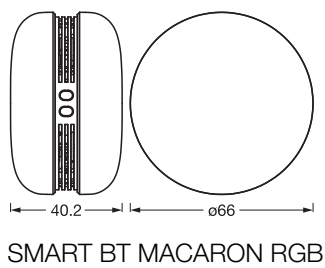
Nominal wattage	1.75 W
Nominal voltage	5 V
Protection class	III
Operating mode	Battery

Photometrical data

Color temperature	RGB
Photobiological safety group acc. to EN62778	RG0

Dimensions & Weight

Diameter	66.00 mm
Height	40.20 mm
Product weight	80.00 g



Materials & Colors

Product color	Yellow
Housing color	Yellow
Body material	Polycarbonate (PC)
Cover material	Polycarbonate (PC)
Glow Wire Test according to IEC 60695-2-12	650 °C
Mercury content	0.0 mg

Application & Mounting

Ambient temperature range	-5...+45 °C
Temperature range at storage	-10...+65 °C

Type of protection	IP20
Dimmable	Yes
Mounting type	Standing
With light source	Yes

Lifespan

Lifespan L70/B50 at 25 °C	3000 h
Number of switching cycles	10000

BATTERY

Type of Battery	Lithium ion
Battery size [GMS]	Others
Number of included batteries	1
Nominal voltage of battery	3.7 V
Battery charging time	2 h

Certificates & Standards

Standards	CE / UKCA
Replaceable light source (EPREL)	Not replaceable

Additional product data

Product remark	Available from November 2025
----------------	------------------------------



EQUIPMENT / ACCESSORIES

- A wrist strap-lanyard and a key ring loop to attach it to bags or any hangable article

Safety advice

- This product is not a toy. It should not be left unattended in the hands of children or operated by children.
- Not designed as a replacement for conventional lighting in private household.
- Battery Warning: Keep out of reach for children. Swallowing can lead to chemical burns, perforation of soft tissue, and death. Severe burns can occur within 2 hours of ingestion. Seek medical attention immediately.
- If the battery compartment (if applicable) does not close securely, stop using the product and keep it away from children. If you think batteries might have been swallowed or placed inside any part of the body, seek immediate medical attention.
- Please avoid: Maximal ambient temperature: +45 °C. Replacement of a battery with an incorrect type that can defeat safeguard (for example, in the case of some lithium battery types). Disposal of a battery into fire or a hot oven, or mechanically crushing or cutting of a battery, that can result in an explosion.

DOWNLOAD DATA

Documents and certificates		Document name
	User instruction / safety instructions	Macaron
	EU Data Act	SMART Bluetooth Mesh Lighting Products

LOGISTICAL DATA

Product code	Packaging unit (Pieces/Unit)	Dimensions (length x width x height)	Gross weight	Volume
4099854667848	Folding box 1	140 mm x 195 mm x 82 mm	129.00 g	2.24 dm³
4099854667855	Shipping box 6	342 mm x 166 mm x 210 mm	1023.00 g	11.92 dm³

The mentioned product code describes the smallest quantity unit which can be ordered. One shipping unit can contain one or more single products. When placing an order, for the quantity please enter single or multiples of a shipping unit.

DISCLAIMER

Subject to change without notice. Errors and omission excepted. Always make sure to use the most recent release.