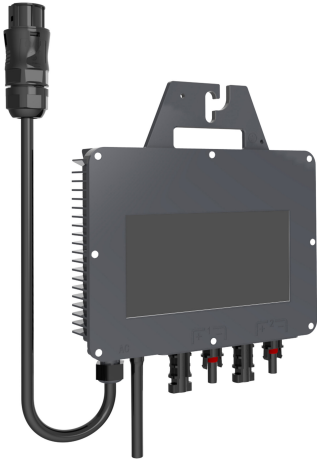


# PRODUCT DATASHEET

## LMS 0.8K F2



---

### Areas of application

- Residential installations
- Both roof and balcony systems

---

### Product benefits

- Flexibility for panel layout and expansion
- Outdoor applications only
- No additional Wi-Fi transmitter needed
- Easy operation and installation
- Cooling by natural convection
- 12 years of product guarantee

---

### Product features

- Compact size
- Type of protection: IP67
- Wi-fi communication
- Wide operating temperature range: -40...+65 °C

## TECHNICAL DATA

### Electrical data

Output phases	Single phase
Max. input power DC	960 W
Input voltage DC	60 V
MPP voltage	30-45 V
Max. input current DC	30 A
Max. input current DC per string input	15 A
Max. input current DC per MPP tracker	30 A
Number of independent MPPT inputs	2
String connections per MPPT input	1
Number of string connections	1
Number of applicable PV modules	2
Nominal output power AC	800 W
Power consumption	<0.1 W
Usable battery capacity	No

### Dimensions & Weight

Length	220 mm
Width	37 mm
Height	220 mm
Product weight	3000.00 g

### Additional product data

Integrated DC switch	No
Connection DC for battery	No
Suitable for emergency power	No
Charging controller integrated	No
With data logging	Yes
Wireless	Yes
Ethernet	No
Integrated transformer	Yes
Type of connection	MC4-Compatible
Temperature range in operation	-45...+65 °C
Ambient temperature range	-45...+65 °C
Outdoor application	Yes
Type of protection	IP67
Product color	Black




### Efficiency

Maximum efficiency	95 %
European efficiency	94 %
CEC efficiency (US products)	94 %

## EQUIPMENT / ACCESSORIES

- Additional DC connectors for the outlets on the microinverter are included
- AC connector included
- Mounting screws included
- Antenna included

## DOWNLOAD DATA

Documents and certificates		Document name
	User instruction / safety instructions	LMS-0.8K F2
	Declarations of conformity	LMS 0.4 0.8 2K F2
	Product family datasheet	LMS-0.8K F2

## LOGISTICAL DATA

Product code	Packaging unit (Pieces/Unit)	Dimensions (length x width x height)	Gross weight	Volume
4099854583568	Folding box 1	340 mm x 325 mm x 55 mm	3600.00 g	6.08 dm <sup>3</sup>
4099854583575	Shipping box 6	355 mm x 345 mm x 350 mm	22600.00 g	42.87 dm <sup>3</sup>

The mentioned product code describes the smallest quantity unit which can be ordered. One shipping unit can contain one or more single products. When placing an order, for the quantity please enter single or multiples of a shipping unit.

## References / Links

- For Guarantee see [www.ledvance.com/guarantee](http://www.ledvance.com/guarantee)

## DISCLAIMER

Subject to change without notice. Errors and omission excepted. Always make sure to use the most recent release.