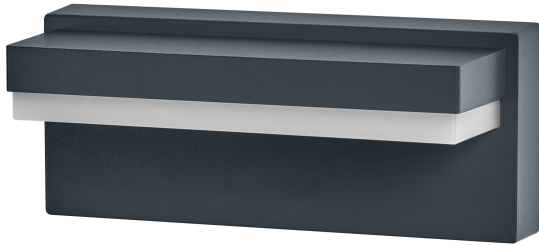


## PRODUCT DATASHEET

### Endura Style Robust Wal IP54 Dark Grey

ENDURA STYLE ROBUST | Dark grey aluminum wall luminaire with integrated light source, long lifetime and adjustable sensor option in technical design



#### Areas of application

- Outdoor
- Entrance lighting
- Patios, balconies
- General illumination
- Facade and building illumination

#### Product benefits

- Option with PIR motion detection and daylight sensor, matching with housing color available
- Energy-efficient thanks to LED technology
- Long-term energy and cost savings (sensor version)

#### Product features

- Robust technical design
- Type of protection: IP54
- Housing material: aluminum
- Diffuser made of opal polycarbonate
- Easy and quick installation
- Lower light smog, on-demand lighting (sensor version)



## TECHNICAL DATA

### Electrical data

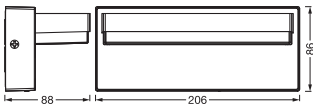
Nominal wattage	12.00 W
Nominal voltage	220...240 V
Mains frequency	50...60 Hz
Nominal current	65.000 mA
Inrush current	0.068 A
Max. number of luminaires per miniature circuit breaker B16	100
Max. number of luminaires per miniature circuit breaker C10	110
Max. number of luminaires per miniature circuit breaker C16	200
Power factor $\lambda$	> 0.80
Total harmonic distortion	$\leq 20$ %
Protection class	I
Operating mode	Mains voltage

### Photometrical data

Luminous flux	1000 lm
Total luminous flux of contained light sources	1450 lm
Luminous efficacy	83 lm/W
Color temperature	3000 K
Light color (designation)	Warm White
Color rendering index Ra	> 80
Standard deviation of color matching	< 6 sdcm
Flickering metric (Pst LM)	$\leq 1$ %
Stroboscope effect metric (SVM)	$\leq 0.4$
Photobiological safety group acc. to EN62778	RG0
Beam angle	90 °

### Dimensions & Weight

Length	206.00 mm
Width	88.00 mm
Height	86.00 mm
Product weight	580.00 g



ENDURA STY ROBUS W IP54 DG

Materials & Colors

Product color	Dark gray
Housing color	Dark gray
Body material	Aluminum
Cover material	Polycarbonate (PC)
Glow Wire Test according to IEC 60695-2-12	650 °C

Application & Mounting

Ambient temperature range	-20...+40 °C
Temperature range at storage	-20...+80 °C
Type of connection	Terminal, 3-Pole (L, N, PE)
Type of protection	IP54
Protection class IK (shock resistance)	IK06
Dimmable	No
Mounting type	Surface
Application environment	Outdoor
With light source	Yes
Replaceable light source	No

Lifespan

Lifespan L70/B50 at 25 °C	50000 h <sup>1)</sup>
Number of switching cycles	50000

1) t[h]: L70 / B50 @ 25 °C (Ta), t[h]: L80 / B10 @ 25 °C (Ta), t[h]: L90 / B10 @ 25 °C (Ta)

Certificates & Standards

Standards	CE / UKCA
Luminaire with limited surface temperature, "D sign"	No
Ball shot safe	No
Replaceable light source (EPREL)	Not replaceable

## Additional product data

Product remark	Available from June 2025
----------------	--------------------------






## EQUIPMENT / ACCESSORIES

- Complete mounting and connecting accessories included

## Safety advice

- All electrical connections must be made by a qualified person.
- Caution, risk of electric shock.
- Product in protection class I. All electrically conductive, metallic housing parts that can absorb voltage during operation or during maintenance in the event of a fault must be continuously connected to the protective earthing conductor.

## DOWNLOAD DATA

Documents and certificates		Document name
	User instruction / safety instructions	Endura Style Robus IP54
	Legal information	Informationstext 18 Abs 4 ElektroG
	Legal information	Safety insert G11219578
	Declarations of conformity	CE Declaration Endura Style
	Declarations of conformity UKCA	UKCA Declaration Endura Style

## LOGISTICAL DATA

Product code	Packaging unit (Pieces/Unit)	Dimensions (length x width x height)	Gross weight	Volume
4099854415739	Folding box 1	97 mm x 217 mm x 98 mm	648.00 g	2.06 dm <sup>3</sup>
4099854415746	Shipping box 6	310 mm x 234 mm x 225 mm	4350.00 g	16.32 dm <sup>3</sup>

The mentioned product code describes the smallest quantity unit which can be ordered. One shipping unit can contain one or more single products. When placing an order, for the quantity please enter single or multiples of a shipping unit.

## DISCLAIMER

Subject to change without notice. Errors and omission excepted. Always make sure to use the most recent release.