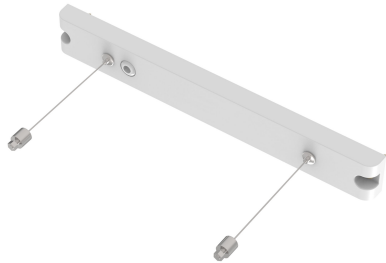


PRODUCT DATASHEET

EM EXIT SUSPENSION KIT

EMERGENCY EXIT SIGN ACCESSORIES | EMERGENCY EXIT SIGN mounting accessories for flag, recessed and suspended installation



Areas of application

- Emergency illumination of escape routes
- Offices, education, public buildings
- Industry

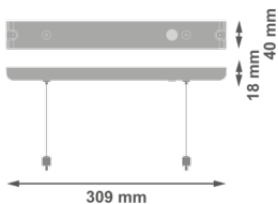
Product benefits

- Easy installation

TECHNICAL DATA

Dimensions & Weight

Length	309.00 mm
Width	40.00 mm
Height	18.00 mm
Product weight	170.00 g



EM EXIT SUSPENSION KIT

Materials & Colors

Product color	White
Housing color	White
Body material	Polycarbonate (PC)

Application & Mounting

Mounting type	Surface
Mounting location	Ceiling
With light source	No
Replaceable light source	No

Emergency lighting


Area of emergency application	Emergency exit signage
-------------------------------	------------------------

Certificates & Standards

Standards	CE / CB / UKCA / EAC
Luminaire with limited surface temperature, "D sign"	No

DOWNLOAD DATA

Documents and certificates		Document name
	User instruction / safety instructions	EM EXIT

Documents and certificates		Document name
	Product information bulletin	The Emergency Range Flyer UK

LOGISTICAL DATA

Product code	Packaging unit (Pieces/Unit)	Dimensions (length x width x height)	Gross weight	Volume
4099854232169	Folding box 1	60 mm x 40 mm x 315 mm	199.00 g	0.76 dm³
4099854232176	Shipping box 50	430 mm x 330 mm x 325 mm	10700.00 g	46.12 dm³

The mentioned product code describes the smallest quantity unit which can be ordered. One shipping unit can contain one or more single products. When placing an order, for the quantity please enter single or multiples of a shipping unit.

DISCLAIMER

Subject to change without notice. Errors and omission excepted. Always make sure to use the most recent release.