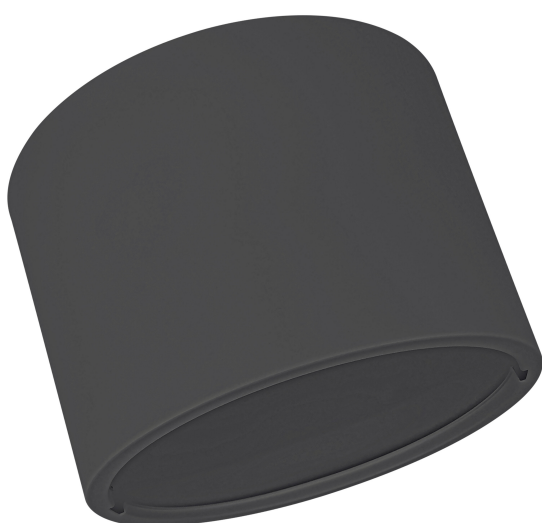


# PRODUCT DATASHEET

## DL CMFT FRAME D250 BK

DOWNLIGHT COMFORT FRAME | Round surface mounting aluminum frame for Downlight Comfort Opal and UGR 19 types



---

### Product benefits

- Easy installation
- Mounting accessories included

---

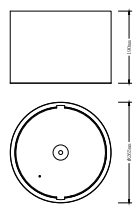
### Product features

- Aluminum frame available in different dimensions

TECHNICAL DATA

Dimensions & Weight

Diameter	265,0 mm
Height	190 mm
Product weight	1600.00 g



DL CMFT FRAME D250



Materials & Colors

Product color	Black
Housing color	Black
Body material	Steel

Application & Mounting

Mounting type	Surface mounting
Mounting location	Ceiling
Replaceable light source	No

DOWNLOAD DATA

Documents and certificates		Document name
	User instruction / safety instructions	DL CMFT FRAME
	Legal information	LUM PANELS_SI

Tender texts		Document name
	Tender documents	DOWNLIGHT COMFORT FRAME D250 BK-en

LOGISTICAL DATA

Product code	Packaging unit (Pieces/Unit)	Dimensions (length x width x height)	Gross weight	Volume
4099854500169	Folding box 1	318 mm x 318 mm x 238 mm	1902.00 g	24.07 dm³
4099854500176	Shipping box 2	655 mm x 335 mm x 265 mm	4552.00 g	58.15 dm³

The mentioned product code describes the smallest quantity unit which can be ordered. One shipping unit can contain one or more single products. When placing an order, for the quantity please enter single or multiples of a shipping unit.

DISCLAIMER

Subject to change without notice. Errors and omission excepted. Always make sure to use the most recent release.