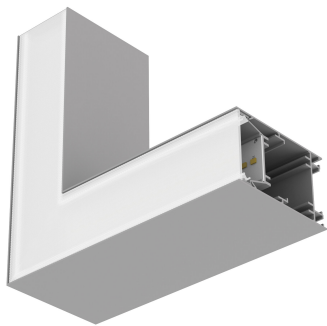


PRODUCT DATASHEET

OFFICE LINEAR SF V L-CON PRISM GY

OFFICE LINEAR SHAPE CONNECTORS | Shape connectors with light engine



Areas of application

- Direct replacement for luminaires with fluorescent lamps
- Offices, education, public buildings
- General indoor illumination
- Single and continuous line configuration

Product benefits

- High performance with CRI90
- Highly versatile due to selectable power steps (Power Select - PS) on the driver
- Highly versatile due to selectable CCT
- High color consistency with SDCM 3
- Easy installation
- 5 years guarantee

Product features

- Modern design
- Lifetime (L70/B50): up to 100,000 h
- Lifetime (L80/B10): up to 89,000 h
- Initial color consistency: 3 SDCM

TECHNICAL DATA

Electrical data

Nominal wattage	6.90 W
Nominal current	84.000 mA
Protection class	I

Photometrical data

Luminous flux	910 lm
Luminous efficacy	128 lm/W
Color temperature	3000 ... 4000 K
Light color (designation)	Warm White...Cool White
Color rendering index Ra	> 90
Standard deviation of color matching	3 sdcn
Photobiological safety group acc. to EN62778	RG1
Beam angle	80 °
UGR	≤ 22

Dimensions & Weight

Length	175.00 mm
Width	45.00 mm
Height	73.00 mm
Product weight	290.00 g

Materials & Colors

Product color	Gray
Housing color	Gray
Body material	Aluminum
Glow Wire Test according to IEC 60695-2-12	650 °C

Application & Mounting

Ambient temperature range	-20...+40 °C
Temperature range at storage	-40...+80 °C
Type of connection	Terminal
Type of protection	IP20
Protection class IK (shock resistance)	IK03
Dimmable	No
Mounting type	Surface
Application environment	Indoor
With light source	Yes

Lifespan


Lifespan L70/B50 at 25 °C	100000 h ¹⁾
Lifespan L80/B10 at 25 °C	89000 h ¹⁾
Lifespan L80/B50 at 25 °C	100000 h
Number of switching cycles	100000

¹⁾ t[h]: L70 / B50 @ 25 °C (Ta), t[h]: L80 / B10 @ 25 °C (Ta), t[h]: L90 / B10 @ 25 °C (Ta)

Certificates & Standards

Standards	CE / ENEC / EAC
Replaceable light source (EPREL)	Not replaceable

DOWNLOAD DATA

Documents and certificates		Document name
	Declarations of conformity	OFFICE LINEAR

LOGISTICAL DATA

Product code	Packaging unit (Pieces/Unit)	Dimensions (length x width x height)	Gross weight	Volume
4099854251870	Folding box 1	350 mm x 350 mm	295.00 g	
4099854251887	Shipping box 4	262 mm x 202 mm x 199 mm	1773.00 g	10.53 dm ³

The mentioned product code describes the smallest quantity unit which can be ordered. One shipping unit can contain one or more single products. When placing an order, for the quantity please enter single or multiples of a shipping unit.

DISCLAIMER

Subject to change without notice. Errors and omission excepted. Always make sure to use the most recent release.