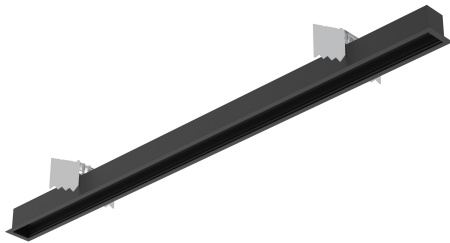


PRODUCT DATASHEET

OFFICE LINEAR RS V 34W BK PS 1124 DALI

OFFICE LINEAR RECESSED RAIL | Recessed rails for Office Linear



Areas of application

- Direct replacement for luminaires with fluorescent lamps
- Offices, education, public buildings
- General indoor illumination
- Single and continuous line configuration
- Recessed applications

Product benefits

- Easy installation
- 5 years guarantee

Product features

- Modern design
- Lifetime: up to 100,000 h
- Available in white, black and grey housing color

TECHNICAL DATA

Electrical data

Nominal wattage	37.00 W
Nominal voltage	200...240 V
Mains frequency	50...60 Hz
Nominal current	400.000 mA
Inrush current time T _{h50}	148 µs
Max. number of luminaires per miniature circuit breaker B16	12
Max. number of luminaires per miniature circuit breaker C10	27
Max. number of luminaires per miniature circuit breaker C16	21
Power factor λ	> 0.90
Total harmonic distortion	< 15 %
Protection class	I
Operating mode	Integrated LED driver

Photometrical data

Flickering metric (Pst LM)	<1
Stroboscope effect metric (SVM)	< 0.4

Dimensions & Weight

Length	1124.20 mm
Width	45.00 mm
Height	56.00 mm
Product weight	1300.00 g



OFFICE LINEAR RS V 34W
PS1124/DALI

Materials & Colors

Product color	Black
Housing color	Black
Body material	Aluminum
Glow Wire Test according to IEC 60695-2-12	650 °C

Application & Mounting

Ambient temperature range	-20...+40 °C
---------------------------	--------------

Temperature range at storage	-40...+80 °C
Type of connection	Terminal
Type of protection	IP20
Protection class IK (shock resistance)	IK03
Dimmable	Yes
Mounting type	Recessed
Application environment	Indoor
With light source	No
Replaceable light source	No









Lifespan

Number of switching cycles	100000
----------------------------	--------

Certificates & Standards

Standards	CE / ENEC / EAC
Replaceable light source (EPREL)	Not replaceable

DOWNLOAD DATA

Documents and certificates		Document name
	User instruction / safety instructions	OFFICE LINEAR RECESSED
	User instruction / safety instructions	OFFICE LINEAR RS
	User instruction / safety instructions	OFFICE LINEAR SF
	Legal information	OFFICE LINEAR SF_RS
	Legal information	OFFICE LINEAR SF_RS
	Legal information	Informationstext 18 Abs 4 ElektroG
	Declarations of conformity	OFFICE LINEAR SF/RS/V
	Certificates	ENEC Certificate OFFICE LINEAR SF/RS/V

LOGISTICAL DATA

Product code	Packaging unit (Pieces/Unit)	Dimensions (length x width x height)	Gross weight	Volume
4099854251733	Folding box 1	1,181 mm x 82 mm x 122 mm	1614.00 g	11.81 dm³
4099854251740	Shipping box 6	1,200 mm x 267 mm x 274 mm	10792.00 g	87.79 dm³

The mentioned product code describes the smallest quantity unit which can be ordered. One shipping unit can contain one or more single products. When placing an order, for the quantity please enter single or multiples of a shipping unit.

DISCLAIMER

Subject to change without notice. Errors and omission excepted. Always make sure to use the most recent release.