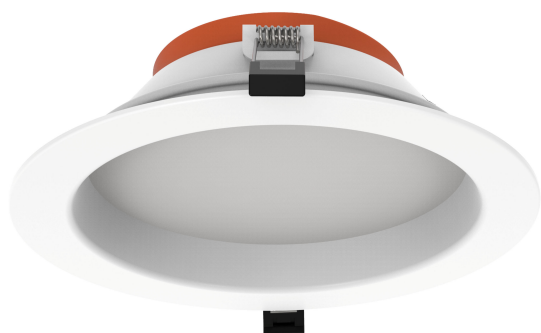


# PRODUCT DATASHEET

## ULTRA COMMERCIAL DOWNLIGHT 16-20W

### 160MM TRI DALI

ULTRA COMMERCIAL DOWNLIGHT | The Ultra Commercial Downlight offers an economical solution for both new projects and the replacement of larger diameter luminaires, such as older compact fluorescent



VALUE  
CLASS

#### Areas of application

- Public areas
- Reception areas and foyers
- Entrances / Hallways
- Retail and small shops
- Hospitality
- Commercial applications
- Lobbies

#### Product benefits

- Phase dim: 10.5W, 12W, 14W, 19/14W, 20/14W, 30/23W, 40/30W
- DALI: 11W, 14.5W, 18W, 18/15W, 20/16W, 29/23W, 39/29W
- Cut out size in 92mm, 118mm, 135mm, 160mm, 195mm, 240mm
- Available in phase dimming and DALI

#### Product features

- TRI colour in 3000K, 4000K and 5700K
- Type of protection: IP54
- Pre-wired with 1.6m flex and plug
- Lifetime up to 50,000 h
- High luminous efficacy: up to 135 lm/W

## TECHNICAL DATA

### Electrical data

Nominal wattage	16.0 W / 20.0 W
Nominal voltage	220...240 V
Mains frequency	50...60 Hz
Power factor $\lambda$	> 0.90
Protection class	II
Operating mode	External LED driver

### Photometrical data

Luminous flux	2100 lm / 2500 lm / 2300 lm
Luminous efficacy	125 lm/W
Color temperature	3000 K / 4000 K / 5700 K
Light color (designation)	Warm White / Cool White / Cool Daylight
Color rendering index Ra	80
Beam angle	105 °
UGR	< 22

### Dimensions & Weight

Diameter	230.00 mm
Height	63.00 mm
Product weight	425.00 g

LDECO DL 160MM TRI

### Materials & Colors

Product color	White
Housing color	White
Body material	Aluminum
Mercury content	0.0 mg

### Application & Mounting

Ambient temperature range	-20...+40 °C
Type of protection	IP54/IP20
Dimmable	Yes
Type of dimming	DALI

Mounting type	Recessed
Mounting location	Ceiling
Application environment	Indoor
Mounting diameter	160 mm
Replaceable light source	No

### Lifespan

Lifespan L70/B50 at 25 °C	50000 h <sup>1)</sup>
---------------------------	-----------------------

<sup>1)</sup> t[h]: L70 / B50 @ 25 °C (Ta), t[h]: L80 / B10 @ 25 °C (Ta), t[h]: L90 / B10 @ 25 °C (Ta)

### LOGISTICAL DATA

Product code	Packaging unit (Pieces/Unit)	Dimensions (length x width x height)	Gross weight	Volume
4099854333996	Folding box 1	260 mm x 212 mm x 91 mm	561.00 g	5.02 dm <sup>3</sup>
4099854334009	Shipping box 8	442 mm x 278 mm x 400 mm	5194.00 g	49.15 dm <sup>3</sup>

The mentioned product code describes the smallest quantity unit which can be ordered. One shipping unit can contain one or more single products. When placing an order, for the quantity please enter single or multiples of a shipping unit.

### DISCLAIMER

Subject to change without notice. Errors and omission excepted. Always make sure to use the most recent release.