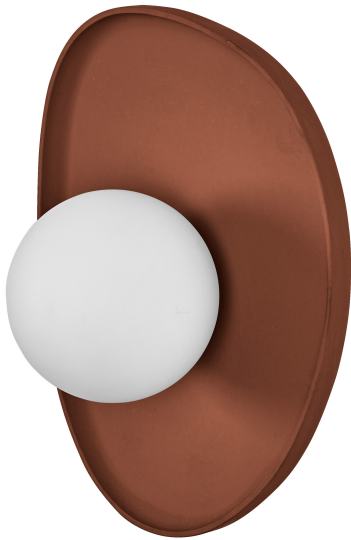


PRODUCT DATASHEET

Decor Clay Nest Wall 1XG9 Brown

Decor Clay | Decorative luminaires made of clay with exchangeable light source



Areas of application

- Indoor applications
- Corridors, entrance areas, stairwells, living rooms, basements

Product benefits

- High-quality look and feel
- High flexibility in the choice of the light source
- Sustainable solution thanks to exchangeable light sources
- Easy mounting

Product features

- Housing material: metal and clay
- Textile cable



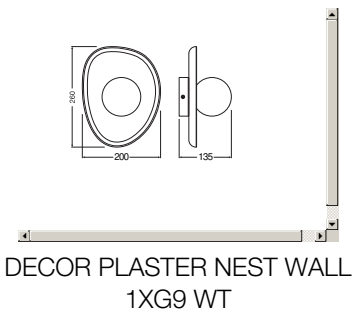
TECHNICAL DATA

Electrical data

Nominal voltage	220...240 V
Mains frequency	50...60 Hz
Protection class	I
Operating mode	Mains voltage

Dimensions & Weight

Length	200.00 mm
Width	135.00 mm
Height	260.00 mm
Product weight	1100.00 g



Materials & Colors

Product color	Brown
Housing color	Brown
Body material	Clay
Cover material	Glass

Application & Mounting

Ambient temperature range	-20...+40 °C
Temperature range at storage	-20...+80 °C
Type of connection	Terminal, 3-Pole (L, N, PE)
Type of protection	IP20
Protection class IK (shock resistance)	IK03
Dimmable	No

Mounting type	Surface
Application environment	Indoor
With light source	No
Replaceable light source	No
Holder designation	G9

Certificates & Standards

Standards	CE / UKCA
Luminaire with limited surface temperature, "D sign"	No
Ball shot safe	No





Additional product data

Product remark	Maximum bulb wattage: 5 W LED
Number of illuminants	1

Safety advice

- All electrical connections must be made by a qualified person.
- Caution, risk of electric shock.
- Product in protection class I. All electrically conductive, metallic housing parts that can absorb voltage during operation or during maintenance in the event of a fault must be continuously connected to the protective earthing conductor.
- Check wall-ceiling for suitability. If uncertain, seek professional advice.

DOWNLOAD DATA

Documents and certificates		Document name
	User instruction / safety instructions	DECOR CLAY CONCRETE PLASTER NEST CEILING
	Legal information	Safety insert G11219601
	Declarations of conformity	DECOR LUM
	Declarations of conformity UKCA	DECOR LUM

LOGISTICAL DATA

Product code	Packaging unit (Pieces/Unit)	Dimensions (length x width x height)	Gross weight	Volume
4099854453472	Folding box 1	144 mm x 262 mm x 443 mm	1750.00 g	16.71 dm ³

Product code	Packaging unit (Pieces/Unit)	Dimensions (length x width x height)	Gross weight	Volume
4099854453489	Shipping box 4	540 mm x 458 mm x 313 mm	7000.00 g	77.41 dm ³

The mentioned product code describes the smallest quantity unit which can be ordered. One shipping unit can contain one or more single products. When placing an order, for the quantity please enter single or multiples of a shipping unit.

DISCLAIMER

Subject to change without notice. Errors and omission excepted. Always make sure to use the most recent release.