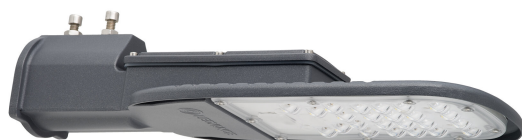


PRODUCT DATASHEET

ECO AREA L SPD 60W 865 7200LM GR

ECO AREA LOW POWER | For applications with luminous flux demand up to 7200 lm



Areas of application

- Road lighting
- Streets
- Car parks
- Area lighting

Product benefits

- Functional and minimalistic design
- Low maintenance and operation costs due to long lifetime of LED
- 5 years guarantee

Product features

- Asymmetric light distribution for various application areas
- Robust die-cast aluminum housing
- Side-entry mounting for 48...60 mm poles
- Surge protection: up to 10 kV (L/N-PE)
- Integrated wide voltage driver, suitable for 100 - 240 V_{AC}
- Pre-installed, flexible 0.5 m cable (H05RN-F), wrapped 3 x 1.0 mm² single wires



TECHNICAL DATA

Electrical data

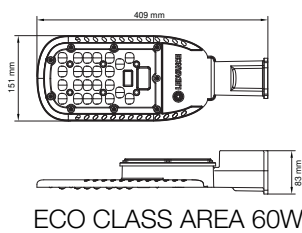
Nominal wattage	60.00 W
Nominal voltage	100...240 V
Mains frequency	50...60 Hz
Nominal current	270 mA
Inrush current	16 A
Inrush current time T_{h50}	120 μ s
Max. number of luminaires per miniature circuit breaker B16	16
Max. number of luminaires per miniature circuit breaker C10	15
Max. number of luminaires per miniature circuit breaker C16	24
Power factor λ	> 0.90
Total harmonic distortion	< 20 %
Protection class	I
Operating mode	Mains voltage

Photometrical data

Luminous flux	7200 lm
Luminous efficacy	120 lm/W
Color temperature	6500 K
Light color (designation)	Cool Daylight
Color rendering index Ra	> 80
Standard deviation of color matching	≤ 5 sdc _m
Photobiological safety group acc. to EN62778	RG1
Photobiological safety group acc. to EN62471	RG1
Beam angle	135 ° x 75 °

Dimensions & Weight

Length	409.00 mm
Width	151.00 mm
Height	83.00 mm
Product weight	1554.00 g
Cable length	500 mm



Materials & Colors

Product color	Gray
Housing color	Gray
Body material	Aluminum
Cover material	Polycarbonate (PC)
Light emitting surface material	Polycarbonate (PC)
Mercury content	0.0 mg

Application & Mounting

Ambient temperature range	-30...+50 °C
Temperature range at storage	-35...+70 °C
Type of connection	Cable, 3-pole
Type of protection	IP66
Protection class IK (shock resistance)	IK08
Dimmable	No
Mounting type	Side entry
Mounting location	Pole
Application environment	Outdoor
With light source	Yes
Replaceable light source	No

Lifespan

Lifespan L70/B50 at 25 °C	50000 h ¹⁾
Number of switching cycles	100000

1) t[h]: L70 / B50 @ 25 °C (Ta), t[h]: L80 / B10 @ 25 °C (Ta), t[h]: L90 / B10 @ 25 °C (Ta)



Certificates & Standards



Standards	CE / EAC
Luminaire with limited surface temperature, "D sign"	No
Replaceable light source (EPREL)	Not replaceable

Additional product data

Number of illuminants	-
-----------------------	---

DOWNLOAD DATA

Documents and certificates	Document name
 User instruction / safety instructions	ECO CLASS AREALIGHTING
 Declarations of conformity	CE Declaration of Conformity_ECO CLASS AREA

Photometric and lighting design files	Document name
 IES file (IES)	ECO AREA L SPD 60W 865 7200LM GR
 LDT file (Eulumdat)	ECO AREA L SPD 60W 865 7200LM GR

LOGISTICAL DATA

Product code	Packaging unit (Pieces/Unit)	Dimensions (length x width x height)	Gross weight	Volume
4058075425279	Folding box 1	448 mm x 121 mm x 200 mm	1754.00 g	10.84 dm ³
4058075425286	Shipping box 8	507 mm x 467 mm x 422 mm	14840.00 g	99.92 dm ³

The mentioned product code describes the smallest quantity unit which can be ordered. One shipping unit can contain one or more single products. When placing an order, for the quantity please enter single or multiples of a shipping unit.

References / Links

– For Guarantee see www.ledvance.com/guarantee

DISCLAIMER

Subject to change without notice. Errors and omission excepted. Always make sure to use the most recent release.