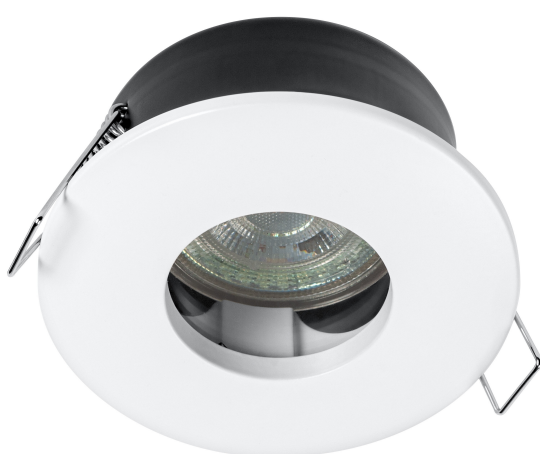


# PRODUCT DATASHEET

## RECESS GU10 4.3W 2700K White IP65

LED SPOT RECESS IP65 TWISTLOCK GU10 | Recess ceiling light with GU10 lamp included and IP65



### Areas of application

- Indoor applications
- Bathrooms

### Product benefits

- Osram lamp included

### Product features

- GU10 lamp included
- Type of protection: IP65
- Housing material: metal



## TECHNICAL DATA

### Electrical data

Nominal wattage	4.30 W
Nominal voltage	220...240 V
Mains frequency	50...60 Hz
Nominal current	38.000 mA
Power factor $\lambda$	> 0.4
Total harmonic distortion	< 20 %
Protection class	I

### Photometrical data

Luminous flux	280 lm
Total luminous flux of contained light sources	350 lm
Luminous efficacy	65 lm/W
Color temperature	2700 K
Light color (designation)	Warm White
Color rendering index Ra	90
Standard deviation of color matching	< 6 sdcm
Photobiological safety group acc. to EN62778	RG1
Beam angle	36 °

### Dimensions & Weight

Diameter	85.00 mm
Height	84.00 mm
Product weight	200.00 g

## SPOT SET

### Materials & Colors

Product color	White
Housing color	White
Body material	Aluminum
Mercury content	0.0 mg

## Application & Mounting

Ambient temperature range	-20...+40 °C
Temperature range at storage	-20...+80 °C
Type of connection	Screw terminal
Type of protection	IP65
Protection class IK (shock resistance)	IK02
Dimmable	No
Mounting type	Recessed
Mounting location	Ceiling
Application environment	Indoor
Mounting diameter	70,0 mm
With light source	Yes
Replaceable light source	No
Holder designation	GU10

## Lifespan

Lifespan L70/B50 at 25 °C	15000 h <sup>1)</sup>
Number of switching cycles	100000

1) t[h]: L70 / B50 @ 25 °C (Ta), t[h]: L80 / B10 @ 25 °C (Ta), t[h]: L90 / B10 @ 25 °C (Ta)

## Certificates & Standards

Standards	CE / UKCA
Luminaire with limited surface temperature, "D sign"	No

## Additional product data

Number of illuminants	1
-----------------------	---




## EQUIPMENT / ACCESSORIES

- Complete mounting and connecting accessories included

## Safety advice

- All electrical connections must be made by a qualified person.
- Caution, risk of electric shock.
- The luminaires are not suitable for covering with thermally insulated material.
- Product in protection class I. All electrically conductive, metallic housing parts that can absorb voltage during operation or during maintenance in the event of a fault must be continuously connected to the protective earthing conductor.
- Check wall-ceiling for suitability. If uncertain, seek professional advice.

DOWNLOAD DATA

Documents and certificates		Document name
	User instruction / safety instructions	RECESS CEILING SPOT
	Declarations of conformity	EC_SP SET
	Declarations of conformity UKCA	SP KIT AND SET

LOGISTICAL DATA

Product code	Packaging unit (Pieces/Unit)	Dimensions (length x width x height)	Gross weight	Volume
4058075573031	Folding box 1	91 mm x 93 mm x 96 mm	242.00 g	0.81 dm <sup>3</sup>
4058075573048	Shipping box 4	201 mm x 197 mm x 117 mm	1168.00 g	4.63 dm <sup>3</sup>

The mentioned product code describes the smallest quantity unit which can be ordered. One shipping unit can contain one or more single products. When placing an order, for the quantity please enter single or multiples of a shipping unit.

DISCLAIMER

Subject to change without notice. Errors and omission excepted. Always make sure to use the most recent release.