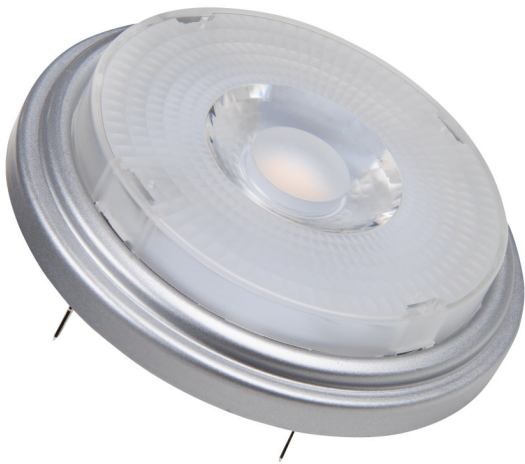


PRODUCT DATASHEET

SST AR111 50 24° 7.3 W/2700K G53 GLOWdim

PARATHOM PRO AR111 | Low-voltage LED reflector lamps AR111 with GLOWdim effect



AREAS OF APPLICATION

- Shops and exhibition rooms
- Domestic applications
- Commercial applications
- Accent lighting
- Outdoor use in outdoor luminaires only (minimum IP65)

PRODUCT BENEFITS

- Always fitting light atmosphere by changing light color from warm white to extra warm white with dimming
- Quick, simple and safe replacement without rewiring
- Design, dimensions, luminous flux comparable to an incandescent or halogen lamp
- Low maintenance costs thanks to long lifetime
- No UV and near-IR radiation in the light beam
- Stepless dimming
- Very high dimmer compatibility, see also www.ledvance.com/dim
- Compatible with many common conventional and electronic control gears (see also compatibility list)
- Instant 100 % light, no warm-up time

PRODUCT FEATURES

- LED alternative to low voltage halogen lamps
- Dimmable
- Base: G53



- Excellent color rendering ($R_a : 97$)
- Lifetime: up to 40,000 h

TECHNICAL DATA

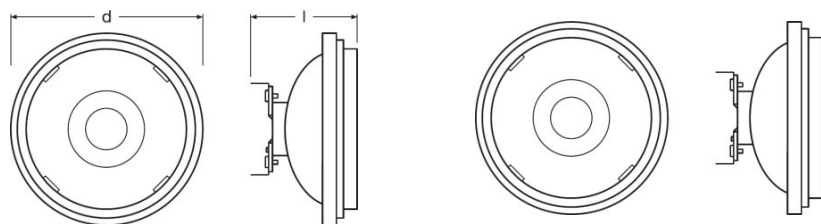
Electrical data

Rated wattage	12.00 W
Nominal wattage	7.30 W
Nominal voltage	12 V
Claimed equiv. conventional lamp power	50 W
Max. lamp no. on circuit break. 10 A (B)	6
Max. lamp no. on circuit break. 16 A (B)	10
Operating frequency	50...60 Hz

Photometrical data

Lumen main.fact.at end of nom.life time	0.70
Light color (designation)	Warm White
Color temperature	2700 K
Luminous flux	450 lm
Color rendering index Ra	≥ 90
Nominal luminous flux	450 lm
Rated color temperature	2700 K

Dimensions & weight



Overall length	62.0 mm
-----------------------	---------

Temperatures & operating conditions

Ambient temperature range	-20...+40 °C
Maximum temperature at tc test point	83 °C

Lifespan

Nominal lamp life time	40000 h
Rated lamp life time	40000 h
Number of switching cycles	100000

Additional product data

Base (standard designation)	G53
Mercury-free	Yes
Product remark	All technical parameters apply to the entire lamp/Due to the complex production process for light-emitting diodes, the typical values shown for the technical LED parameters are purely statistical values that do not necessarily match the actual technical parameters of each individual product, which can vary from the typical value

Capabilities

Dimmable	Yes
----------	-----

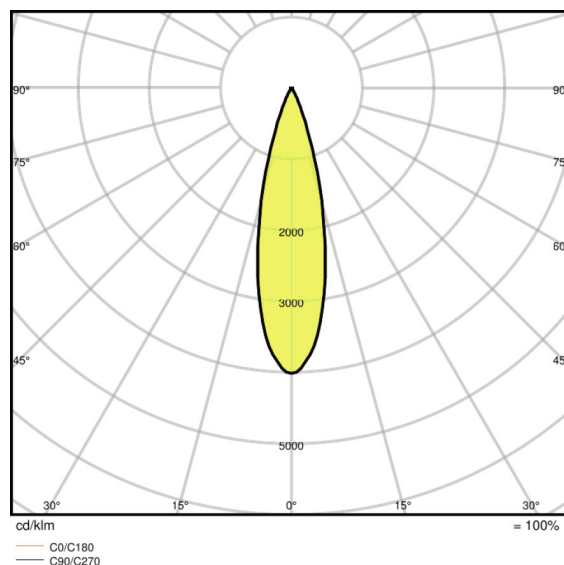
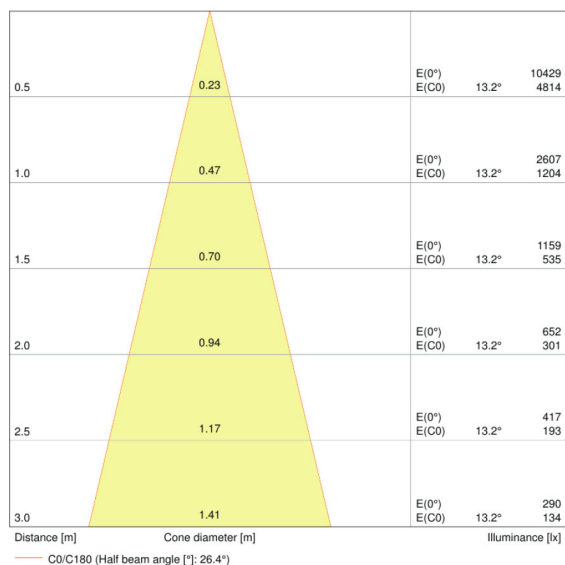
Certificates & standards

Energy efficiency class	A
-------------------------	---

Country-specific categorizations

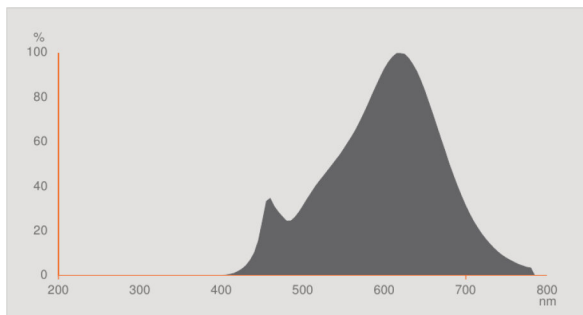
Order reference	LED111GD5024 12
-----------------	-----------------

Light Distribution



LDC typ cone

LDC typ polar



Spectral power distribution

LOGISTICAL DATA

Product code	Packaging unit (Pieces/Unit)	Dimensions (length x width x height)	Gross weight	Volume
4058075104891	Folding carton box 1	86 mm x 86 mm x 112 mm	246.00 g	0.83 dm ³
4058075104907	Shipping carton box 6	275 mm x 185 mm x 130 mm	1569.00 g	6.61 dm ³
4058075448964	Folding carton box 1	113 mm x 66 mm x 113 mm	246.00 g	0.84 dm ³
4058075448971	Shipping carton box 6	238 mm x 208 mm x 123 mm	1292.00 g	6.09 dm ³

The mentioned product code describes the smallest quantity unit which can be ordered. One shipping unit can contain one or more single products. When placing an order, for the quantity please enter single or multiples of a shipping unit.

REFERENCES / LINKS

For dimming conformity see

- ▶ www.ledvance.com/dim

For further products and actual information concerning LED lamps see

- ▶ www.ledvance.com/ledlamps

Further information see

- ▶ www.ledvance.com/low-voltage-ledlamps

DISCLAIMER

Subject to change without notice. Errors and omission excepted. Always make sure to use the most recent release.