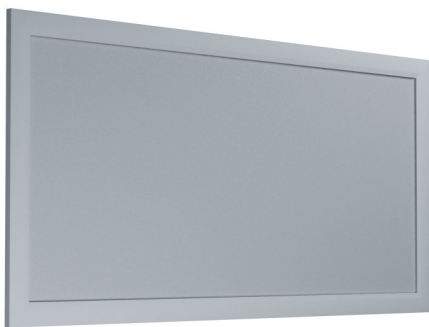


# PRODUCT FAMILY DATASHEET

## PLANON Plus

Slim panel luminaires for surface mounting



---

### AREAS OF APPLICATION

- For indoor use only
- Decorative domestic lighting
- Ceiling and wall surface mounting

---

### PRODUCT BENEFITS

- Very homogenous light
- Quick and simple installation by one person

---

### PRODUCT FEATURES

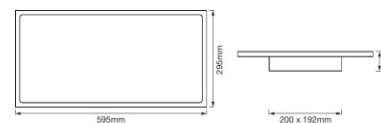
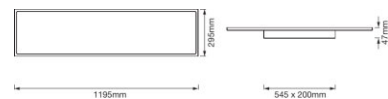
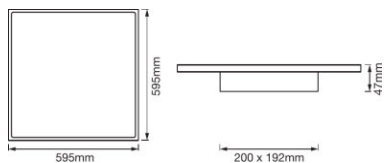
- Ceiling luminaire with advanced LED technology



TECHNICAL DATA

Product description	Electrical data			Photometrical data		Light technical data	Dimensions & weight				Colors & materials
	Nominal wattage	Nominal voltage	Mains frequency	Color temperature	Luminous flux	Beam angle	Length	Width	Height	Product weight	Body material
PLANON PLUS 600x600 36 W 3000 K	36.00 W	220...240 V	50/60 Hz	3000 K	3200 lm	110 °	595.0 mm	595.0 mm	46.6 mm	3387.00 g	Aluminum
PLANON PLUS 600x600 36 W 4000 K	36.00 W	220...240 V	50/60 Hz	4000 K	3200 lm	110 °	595.0 mm	595.0 mm	46.6 mm	3387.00 g	Aluminum
PLANON PLUS 600x600 30 W	30.00 W	220...240 V	50/60 Hz	2700...6500 K	2800 lm	110 °	595.0 mm	595.0 mm	46.6 mm	3457.00 g	Aluminum
PLANON PLUS 300x1200 36 W 3000 K	36.00 W	220...240 V	50/60 Hz	3000 K	3400 lm	110 °	1195 mm	295.0 mm	46.6 mm	4056.00 g	Aluminum
PLANON PLUS 300x1200 36 W 4000 K	36.00 W	220...240 V	50/60 Hz	4000 K	3400 lm	110 °	1195 mm	295.0 mm	46.6 mm	4056.00 g	Aluminum
PLANON PLUS 300x1200 30 W	30.00 W	220...240 V	50/60 Hz	2700...6500 K	2800 lm	110 °	1195 mm	295.0 mm	46.6 mm	4126.00 g	Aluminum
PLANON PLUS 300x600 15 W 3000 K	15.00 W	220...240 V	50/60 Hz	3000 K	1400 lm	110 °	595.0 mm	295.0 mm	46.6 mm	2100.00 g	Aluminum
PLANON PLUS 300x600 15 W 4000 K	15.00 W	220...240 V	50/60 Hz	4000 K	1400 lm	110 °	595.0 mm	295.0 mm	46.6 mm	2100.00 g	Aluminum

Product description	Housing color	Product color	Temperatures & operating conditions	Lifespan	Capabilities		Certificates & standards	
			Ambient temperature range	Number of switching cycles	Dimmable	Type of connection	Protection class	Type of protection
PLANON PLUS 600x600 36 W 3000 K	White	White	-20...+40 °C	25000	No	Screw terminal	II	IP20
PLANON PLUS 600x600 36 W 4000 K	White	White	-20...+40 °C	25000	No	Screw terminal	II	IP20
PLANON PLUS 600x600 30 W	White	White	-20...+40 °C	25000	Yes	Screw terminal	II	IP20
PLANON PLUS 300x1200 36 W 3000 K	White	White	-20...+40 °C	25000	No	Screw terminal	II	IP20
PLANON PLUS 300x1200 36 W 4000 K	White	White	-20...+40 °C	25000	No	Screw terminal	II	IP20
PLANON PLUS 300x1200 30 W	White	White	-20...+40 °C	25000	Yes	Screw terminal	II	IP20
PLANON PLUS 300x600 15 W 3000 K	White	White	-20...+40 °C	25000	No	Screw terminal	II	IP20
PLANON PLUS 300x600 15 W 4000 K	White	White	-20...+40 °C	25000	No	Screw terminal	II	IP20



PLANON PLUS 600x600 36 W 3000 K,  
 PLANON PLUS 600x600 36 W 4000 K,  
 PLANON PLUS 600x600 30 W

PLANON PLUS 300x1200 36 W 3000 K,  
 PLANON PLUS 300x1200 36 W 4000 K,  
 PLANON PLUS 300x1200 30 W

PLANON PLUS 300x600 15 W 3000 K,  
 PLANON PLUS 300x600 15 W 4000 K

### EQUIPMENT / ACCESSORIES

- Pre-assembled mounting kit, screws and dowels included

### APPLICATION ADVICE

For more detailed application information and graphics please see product datasheet.

### LOGISTICAL DATA

Product code	Packaging unit (Pieces/Unit)	Dimensions (length x width x height)	Gross weight	Volume
4058075267374	Shipping carton box 4	647 mm x 267 mm x 688 mm	17012.00 g	118.85 dm <sup>3</sup>
4058075267893	Shipping carton box 4	647 mm x 267 mm x 688 mm	17012.00 g	118.85 dm <sup>3</sup>

Product code	Packaging unit (Pieces/Unit)	Dimensions (length x width x height)	Gross weight	Volume
4058075267930	Shipping carton box 4	647 mm x 267 mm x 688 mm	17292.00 g	118.85 dm <sup>3</sup>
4058075267954	Shipping carton box 4	1267 mm x 267 mm x 373 mm	19817.00 g	126.18 dm <sup>3</sup>
4058075267978	Shipping carton box 4	1267 mm x 267 mm x 373 mm	19817.00 g	126.18 dm <sup>3</sup>
4058075267992	Shipping carton box 4	1267 mm x 267 mm x 373 mm	20097.00 g	126.18 dm <sup>3</sup>
4058075268050	Shipping carton box 4	647 mm x 267 mm x 388 mm	10518.00 g	67.03 dm <sup>3</sup>
4058075268098	Shipping carton box 4	647 mm x 267 mm x 388 mm	10518.00 g	67.03 dm <sup>3</sup>

The mentioned product code describes the smallest quantity unit which can be ordered. One shipping unit can contain one or more single products. When placing an order, for the quantity please enter single or multiples of a shipping unit.

---

#### DISCLAIMER

Subject to change without notice. Errors and omission excepted. Always make sure to use the most recent release.