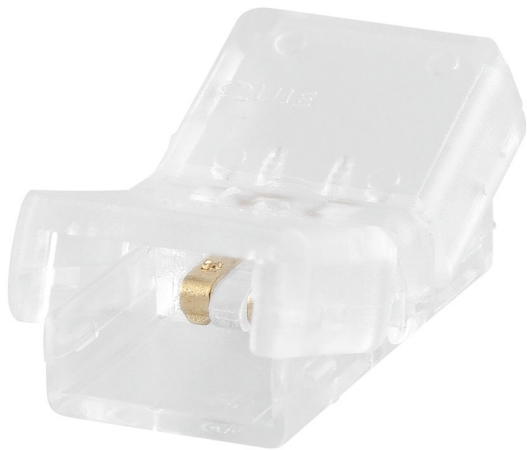


# PRODUCT DATASHEET

## LS AY PFM -CSD/P2/P

LED Strip Performance Connectors | Connector for LED strips



---

### AREAS OF APPLICATION

- General indoor illumination

---

### PRODUCT BENEFITS

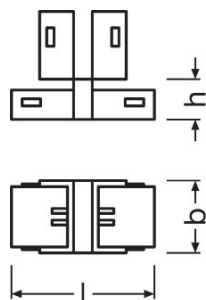
- Easy installation of connector, no manual wiring required
- Tool-free installation

**TECHNICAL DATA**

Electrical data

<b>Nominal current</b>	5 A
<b>Nominal voltage</b>	0...36 V

Dimensions & weight



<b>Product weight</b>	3.00 g
<b>Length</b>	27.0 mm
<b>Width</b>	15.0 mm
<b>Height</b>	7.0 mm

Additional product data

<b>Content – equipment</b>	2 pcs
<b>Number of PINs</b>	2

Certificates & standards

<b>Type of protection</b>	IP66
---------------------------	------

**LOGISTICAL DATA**

Product code	Packaging unit (Pieces/Unit)	Dimensions (length x width x height)	Gross weight	Volume
4058075275485	Bag 2	80 mm x 120 mm x 5 mm	7.00 g	0.05 dm <sup>3</sup>
4058075275492	Shipping carton box 100	120 mm x 100 mm x 120 mm	398.00 g	1.44 dm <sup>3</sup>
4058075275508	Shipping carton box 1000	525 mm x 140 mm x 270 mm	4371.00 g	19.85 dm <sup>3</sup>

The mentioned product code describes the smallest quantity unit which can be ordered. One shipping unit can contain one or more single products. When placing an order, for the quantity please enter single or multiples of a shipping unit.

---

**DISCLAIMER**

Subject to change without notice. Errors and omission excepted. Always make sure to use the most recent release.