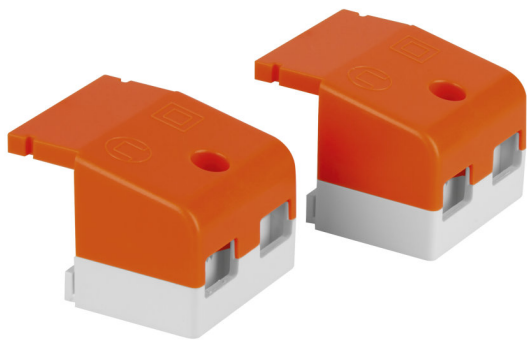


PRODUCT FAMILY DATASHEET

LED DRIVER Cable Clamp

Driver accessories kit



AREAS OF APPLICATION

- Downlights, flat luminaires
- Suitable for different cable types
- Suitable for indoor applications

PRODUCT BENEFITS

- Simple and quick cable mounting
- Sufficient space for cable connection
- Free cable connection thanks to open flaps

PRODUCT FEATURES

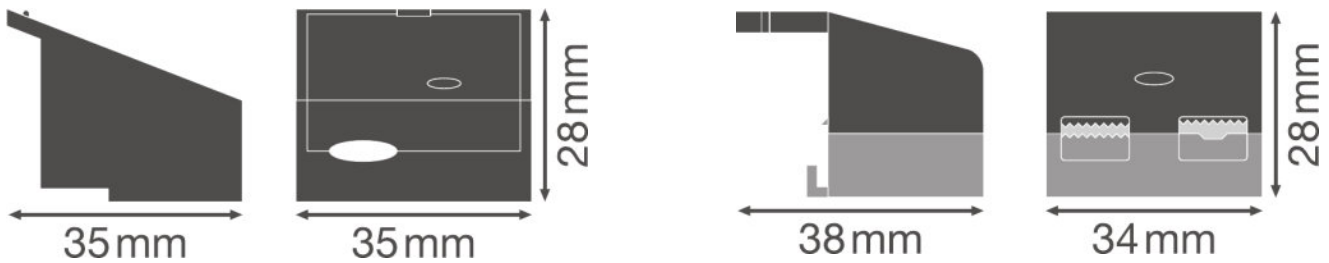
- Easy to install and flexible cable clamps
- Separate cable clamps for primary and secondary side
- Pre-fixed, captive screws

TECHNICAL DATA

Dimensions & weight

Product description	Length	Width	Height	Product weight
DR AY DS-PFM-CLAMP DUO	35.7 mm	35.2 mm	28.2 mm	1.00 g
DR AY PC-PFM-CLAMP DUO	38.3 mm	34.0 mm	28.5 mm	1.00 g

Product line drawing



DR AY DS-PFM-CLAMP DUO

DR AY PC-PFM-CLAMP DUO

APPLICATION ADVICE

For more detailed application information and graphics please see product datasheet.



SALES AND TECHNICAL SUPPORT

Sales and Technical Support www.ledvance.com

COUNTRY SPECIFIC INFORMATION

Product description	Product code	METEL-Code	SEG number	STK number	UK Org
DR AY DS-PFM-CLAMP DUO	4058075313200	-	7981962	4031428	-
DR AY PC-PFM-CLAMP DUO	4058075313170	-	7981961	4031427	-

DOWNLOAD DATA

File	
	Product Datasheet DR AY DS-PFM-CLAMP DUO
	Product Datasheet DR AY PC-PFM-CLAMP DUO

LOGISTICAL DATA

Product code	Packaging unit (Pieces/Unit)	Dimensions (length x width x height)	Gross weight	Volume
4058075313217	Shipping carton box 20	242 mm x 82 mm x 49 mm	67.00 g	0.97 dm ³
4058075313187	Shipping carton box 20	172 mm x 172 mm x 59 mm	99.00 g	1.75 dm ³

The mentioned product code describes the smallest quantity unit which can be ordered. One shipping unit can contain one or more single products. When placing an order, for the quantity please enter single or multiples of a shipping unit.

DISCLAIMER

Subject to change without notice. Errors and omission excepted. Always make sure to use the most recent release.