

# PRODUCT DATASHEET

## DULUX L LED HF & AC Mains 7 W/4000K

OSRAM DULUX L LED HF & AC MAINS | LED replacement for CFLni, with 4-pin 2G11 base for ECG and AC mains operation



---

### AREAS OF APPLICATION

- Offices, public buildings
- Shops
- Supermarkets and department stores
- Hotels, restaurants
- Industry
- Outdoor applications only in suitable luminaires

---

### PRODUCT BENEFITS

- LED replacement for conventional compact fluorescent lamps for use in ECG luminaires or on AC mains
- Quick, simple and safe replacement
- Simple replacement thanks to similar design as conventional compact fluorescent lamps
- Low energy consumption

---

### PRODUCT FEATURES

- Single-ended four-pin plug-in 2G11 base
- Short and compact pin-base lamp with double-turn tubes
- Type of protection: IP20
- Lifetime: up to 30,000 h
- Mercury-free lamps



**TECHNICAL DATA**

Electrical data

Rated wattage	7.00 W
Nominal wattage	7.00 W
Nominal voltage	220...240 V
Max. lamp no. on circuit break. 10 A (B)	120
Max. lamp no. on circuit break. 16 A (B)	180
Operating frequency	50/60 Hz
Inrush current	10.0 A
Power factor $\lambda$	> 0.90

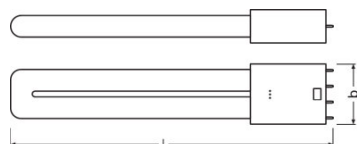
Photometrical data

Nominal luminous flux	1000 lm
Rated luminous flux	1000 lm
Lumen main.fact.at end of nom.life time	0.70
Light color (designation)	Cool White
Color temperature	4000 K
Luminous flux	1000 lm
Color rendering index Ra	$\geq 80$
Standard deviation of color matching	$\leq 6$ sdc <sub>m</sub>
Rated color temperature	4000 K
Color rendering index Ra	$\geq 80$

Light technical data

Warm-up time (60 %)	< 0.50 s
Beam angle	140 °
Starting time	< 0.5 s

Dimensions & weight



<b>Overall length</b>	229.4 mm
<b>Diameter</b>	44.0 mm
<b>Outer bulb</b>	-
<b>Length</b>	229.4 mm

#### Temperatures & operating conditions

<b>Ambient temperature range</b>	-20...+35 °C
<b>Maximum temperature at tc test point</b>	55 °C

#### Lifespan

<b>Nominal lamp life time</b>	30000 h
<b>Rated lamp life time</b>	30000 h
<b>Number of switching cycles</b>	200000
<b>Lumen maintenance at end of service life</b>	0.70

#### Additional product data

<b>Base (standard designation)</b>	2G11
<b>Mercury content</b>	0.0 mg
<b>Mercury-free</b>	Yes
<b>Show WEEE picto</b>	Yes

#### Capabilities

<b>Dimmable</b>	No
-----------------	----

#### Certificates & standards

<b>Photobiological safety group EN62778</b>	RG1
<b>Energy efficiency class</b>	A++
<b>Energy consumption</b>	7 kWh/1000h

#### Country-specific categorizations

<b>Order reference</b>	DULUX L18LED 7W
------------------------	-----------------

#### SAFETY ADVICE

Only suitable for temperatures of up to 35°C inside of the luminaire.

Always check the latest update of the compatibility list available on [www.ledvance.com/ecg-compatibility](http://www.ledvance.com/ecg-compatibility)

Not suitable for operation with low-loss and conventional control gears

Not suitable for tandem operation.

#### LOGISTICAL DATA

Product code	Packaging unit (Pieces/Unit)	Dimensions (length x width x height)	Gross weight	Volume
--------------	------------------------------	--------------------------------------	--------------	--------

---

4058075135383	Folding carton box 1	27 mm x 47 mm x 276 mm	151.00 g	0.35 dm <sup>3</sup>
4058075135390	Shipping carton box 10	292 mm x 254 mm x 81 mm	1514.00 g	6.01 dm <sup>3</sup>

---

The mentioned product code describes the smallest quantity unit which can be ordered. One shipping unit can contain one or more single products. When placing an order, for the quantity please enter single or multiples of a shipping unit.

---

#### DISCLAIMER

Subject to change without notice. Errors and omission excepted. Always make sure to use the most recent release.