

PRODUCT DATASHEET

DULUX L LED HF & AC Mains 7 W/3000K

OSRAM DULUX L LED HF & AC MAINS | LED replacement for CFLni, with 4-pin 2G11 base for ECG and AC mains operation



AREAS OF APPLICATION

- Offices, public buildings
- Shops
- Supermarkets and department stores
- Hotels, restaurants
- Industry
- Outdoor applications only in suitable luminaires

PRODUCT BENEFITS

- LED replacement for conventional compact fluorescent lamps for use in ECG luminaires or on AC mains
- Quick, simple and safe replacement
- Simple replacement thanks to similar design as conventional compact fluorescent lamps
- Low energy consumption

PRODUCT FEATURES

- Single-ended four-pin plug-in 2G11 base
- Short and compact pin-base lamp with double-turn tubes
- Type of protection: IP20
- Lifetime: up to 30,000 h
- Mercury-free lamps



TECHNICAL DATA

Electrical data

| | |
|--|-------------|
| Rated wattage | 7.00 W |
| Nominal wattage | 7.00 W |
| Nominal voltage | 220...240 V |
| Max. lamp no. on circuit break. 10 A (B) | 120 |
| Max. lamp no. on circuit break. 16 A (B) | 180 |
| Operating frequency | 50/60 Hz |
| Inrush current | 10.0 A |
| Power factor λ | > 0.90 |

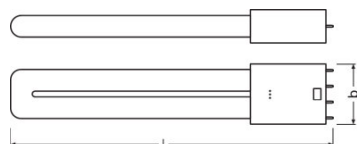
Photometrical data

| | |
|---|---------------------------|
| Nominal luminous flux | 900 lm |
| Rated luminous flux | 900 lm |
| Lumen main.fact.at end of nom.life time | 0.70 |
| Light color (designation) | Warm White |
| Color temperature | 3000 K |
| Luminous flux | 900 lm |
| Color rendering index Ra | ≥ 80 |
| Standard deviation of color matching | ≤ 6 sdc _m |
| Rated color temperature | 3000 K |
| Color rendering index Ra | ≥ 80 |

Light technical data

| | |
|---------------------|----------|
| Warm-up time (60 %) | < 0.50 s |
| Beam angle | 140 ° |
| Starting time | < 0.5 s |

Dimensions & weight



| | |
|-----------------------|----------|
| Overall length | 229.4 mm |
| Diameter | 44.0 mm |
| Outer bulb | - |
| Length | 229.4 mm |

Temperatures & operating conditions

| | |
|---|--------------|
| Ambient temperature range | -20...+35 °C |
| Maximum temperature at tc test point | 55 °C |

Lifespan

| | |
|---|---------|
| Nominal lamp life time | 30000 h |
| Rated lamp life time | 30000 h |
| Number of switching cycles | 200000 |
| Lumen maintenance at end of service life | 0.70 |

Additional product data

| | |
|------------------------------------|--------|
| Base (standard designation) | 2G11 |
| Mercury content | 0.0 mg |
| Mercury-free | Yes |
| Show WEEE picto | Yes |

Capabilities

| | |
|-----------------|----|
| Dimmable | No |
|-----------------|----|

Certificates & standards

| | |
|--------------------------------|-------------|
| Energy efficiency class | A++ |
| Energy consumption | 7 kWh/1000h |

Country-specific categorizations

| | |
|------------------------|-----------------|
| Order reference | DULUX L18LED 7W |
|------------------------|-----------------|

SAFETY ADVICE

Only suitable for temperatures of up to 35°C inside of the luminaire.
 Always check the latest update of the compatibility list available on www.ledvance.com/ecg-compatibility
 Not suitable for operation with low-loss and conventional control gears
 Not suitable for tandem operation.

LOGISTICAL DATA

| Product code | Packaging unit (Pieces/Unit) | Dimensions (length x width x height) | Gross weight | Volume |
|--------------|------------------------------|--------------------------------------|--------------|--------|
|--------------|------------------------------|--------------------------------------|--------------|--------|

| | | | | |
|---------------|---------------------------|-------------------------|-----------|----------------------|
| 4058075135369 | Folding carton box 1 | 27 mm x 47 mm x 276 mm | 151.00 g | 0.35 dm ³ |
| 4058075135376 | Shipping carton box 10 | 292 mm x 254 mm x 81 mm | 1507.00 g | 6.01 dm ³ |

The mentioned product code describes the smallest quantity unit which can be ordered. One shipping unit can contain one or more single products. When placing an order, for the quantity please enter single or multiples of a shipping unit.

DISCLAIMER

Subject to change without notice. Errors and omission excepted. Always make sure to use the most recent release.