

# PRODUCT FAMILY DATASHEET

## LUMILUX T5 FC

Circular fluorescent lamps 16 mm, with 2GX13 base



---

### AREAS OF APPLICATION

- Public buildings
- Offices
- Restaurants
- Industry
- Shops
- Supermarkets and department stores
- Hotels

---

### PRODUCT BENEFITS

- Extremely economical
- Good quality of light
- Excellent luminous flux
- Excellent uniform illumination with no shadows
- Good average life (with OSRAM ECG)

---

### PRODUCT FEATURES

- Good color rendering group: 1B ( $R_a$ : 80...89)
- Dimmable (from 100...1 % with QTi DALI/DIM ECG)
- Single-ended round fluorescent lamp
- Tube diameter: 16.0 mm



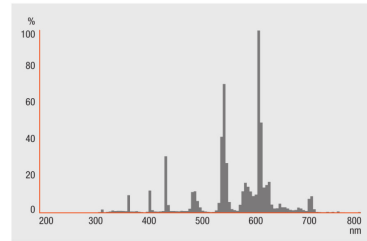
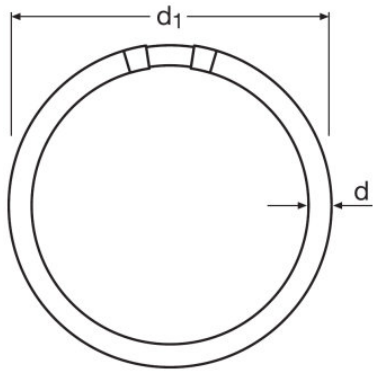
TECHNICAL DATA

Product description	Electrical data	Photometrical data							Dimensions & weight		Temperatures & operating conditions	Lifespan
	Nominal wattage	Color rendering index Ra	Luminous flux at 25 °C	Color temperature	Light color (designation)	Color temperature	Luminous flux	Color rendering index Ra	Tube diameter	Length with base excl. base pins/connection	Rated ambient temp.w. max.luminous flux	Service life
FC 22 W/2700K <sup>1)</sup>	22.00 W	≥80	1900 lm	2700 K	LUMILUX INTERNA	2700 K	1900 lm	≥80	16 mm	225.00 mm	35.0 °C	8000 h <sup>2)</sup>
FC 22 W/3000K <sup>1)</sup>	22.00 W	≥80	1900 lm	3000 K	LUMILUX Warm White	3000 K	1900 lm	≥80	16 mm	225.00 mm	35.0 °C	8000 h <sup>2)</sup>
FC 22 W/4000K <sup>1)</sup>	22.00 W	≥80	1900 lm	4000 K	LUMILUX Cool White	4000 K	1900 lm	≥80	16 mm	225.00 mm	35.0 °C	8000 h <sup>2)</sup>
FC 22 W/6500K <sup>1)</sup>	22.00 W	≥80	1800 lm	6500 K	LUMILUX Cool Daylight	6500 K	1800 lm	≥80	16 mm	225.00 mm	35.0 °C	8000 h <sup>2)</sup>
FC 40 W/2700K <sup>1)</sup>	40.00 W	≥80	3400 lm	2700 K	LUMILUX INTERNA	2700 K	3400 lm	≥80	16 mm	300.00 mm	35.0 °C	8000 h <sup>2)</sup>
FC 40 W/3000K <sup>1)</sup>	40.00 W	≥80	3400 lm	3000 K	LUMILUX Warm White	3000 K	3400 lm	≥80	16 mm	300.00 mm	35.0 °C	8000 h <sup>2)</sup>
FC 40 W/4000K <sup>1)</sup>	40.00 W	≥80	3400 lm	4000 K	LUMILUX Cool White	4000 K	3400 lm	≥80	16 mm	300.00 mm	35.0 °C	8000 h <sup>2)</sup>
FC 40 W/6500K <sup>1)</sup>	40.00 W	≥80	3300 lm	6500 K	LUMILUX Cool Daylight	6500 K	3000 lm	≥80	16 mm	300.00 mm	35.0 °C	8000 h <sup>2)</sup>
FC 55 W/2700K <sup>1)</sup>	55.00 W	≥80	4200 lm	2700 K	LUMILUX INTERNA	2700 K	4200 lm	≥80	16 mm	300.00 mm	35.0 °C	8000 h <sup>2)</sup>
FC 55 W/3000K <sup>1)</sup>	55.00 W	≥80	4200 lm	3000 K	LUMILUX Warm White	3000 K	4200 lm	≥80	16 mm	300.00 mm	35.0 °C	8000 h <sup>2)</sup>
FC 55 W/4000K <sup>1)</sup>	55.00 W	≥80	4200 lm	4000 K	LUMILUX Cool White	4000 K	4200 lm	≥80	16 mm	300.00 mm	35.0 °C	8000 h <sup>2)</sup>
FC 55 W/6500K <sup>1)</sup>	55.00 W	≥80	3990 lm	6500 K	LUMILUX Cool Daylight	6500 K	3990 lm	≥80	16 mm	300.00 mm	35.0 °C	8000 h <sup>2)</sup>

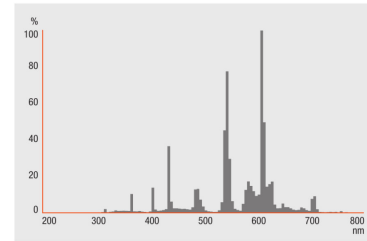
Product description	Lifespan	Additional product data		Certificates & standards	
		Base (standard designation)	Show WEEE picto	Energy efficiency class	Energy consumption
FC 22 W/2700K <sup>1)</sup>	12000 h <sup>2)</sup>	2GX13	Yes	A	25 kWh/1000h
FC 22 W/3000K <sup>1)</sup>	12000 h <sup>2)</sup>	2GX13	Yes	A	25 kWh/1000h
FC 22 W/4000K <sup>1)</sup>	12000 h <sup>2)</sup>	2GX13	Yes	A	25 kWh/1000h
FC 22 W/6500K <sup>1)</sup>	12000 h <sup>2)</sup>	2GX13	Yes	A	25 kWh/1000h
FC 40 W/2700K <sup>1)</sup>	12000 h <sup>2)</sup>	2GX13	Yes	A+	44 kWh/1000h
FC 40 W/3000K <sup>1)</sup>	12000 h <sup>2)</sup>	2GX13	Yes	A+	44 kWh/1000h
FC 40 W/4000K <sup>1)</sup>	12000 h <sup>2)</sup>	2GX13	Yes	A+	44 kWh/1000h
FC 40 W/6500K <sup>1)</sup>	12000 h <sup>2)</sup>	2GX13	Yes	A+	44 kWh/1000h
FC 55 W/2700K <sup>1)</sup>	12000 h <sup>2)</sup>	2GX13	Yes	A	61 kWh/1000h
FC 55 W/3000K <sup>1)</sup>	12000 h <sup>2)</sup>	2GX13	Yes	A	61 kWh/1000h
FC 55 W/4000K <sup>1)</sup>	12000 h <sup>2)</sup>	2GX13	Yes	A	61 kWh/1000h
FC 55 W/6500K <sup>1)</sup>	12000 h <sup>2)</sup>	2GX13	Yes	A	61 kWh/1000h

<sup>1)</sup> Suitable for ECG operation only

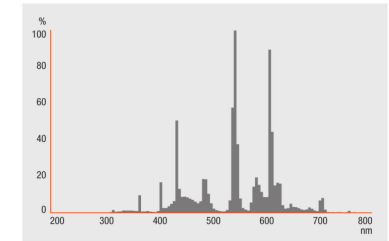
<sup>2)</sup> With preheat ECG



FC 22 W/2700K, FC 40 W/2700K, FC 55 W/2700K

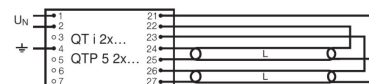
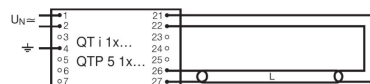
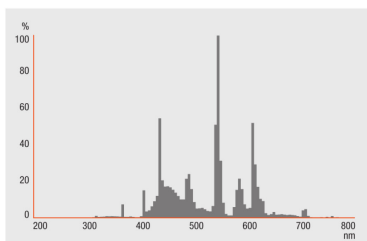


FC 22 W/3000K, FC 40 W/3000K, FC 55 W/3000K



FC 22 W/4000K, FC 40 W/4000K, FC 55 W/4000K

FC 22 W/2700K, FC 22 W/3000K, FC 22 W/4000K, FC 22 W/6500K, FC 40 W/2700K, FC 40 W/3000K, FC 40 W/4000K, FC 40 W/6500K, FC 55 W/2700K, FC 55 W/3000K, FC 55 W/4000K, FC 55 W/6500K



FC 22 W/6500K, FC 40 W/6500K, FC 55 W/6500K

FC 22 W/2700K, FC 22 W/3000K, FC 22 W/4000K, FC 22 W/6500K, FC 40 W/2700K, FC 40 W/3000K, FC 40 W/4000K, FC 40 W/6500K, FC 55 W/2700K, FC 55 W/3000K, FC 55 W/4000K, FC 55 W/6500K

FC 22 W/2700K, FC 22 W/3000K, FC 22 W/4000K, FC 22 W/6500K, FC 40 W/2700K, FC 40 W/3000K, FC 40 W/4000K, FC 40 W/6500K, FC 55 W/2700K, FC 55 W/3000K, FC 55 W/4000K, FC 55 W/6500K

### SYSTEM GUARANTEE

OSRAM System+ Guarantee in combination with OSRAM ECGs

### EQUIPMENT / ACCESSORIES

– Exclusively for operation on electronic control gears

### SAFETY ADVICE

In case of lamp breakage: [www.ledvance.com/brokenlamp](http://www.ledvance.com/brokenlamp)

## APPLICATION ADVICE

For more detailed application information and graphics please see product datasheet.

## LOGISTICAL DATA

Product code	Packaging unit (Pieces/Unit)	Dimensions (length x width x height)	Gross weight	Volume
4050300646244	Shipping carton box 12	375 mm x 245 mm x 253 mm	1865.00 g	23.24 dm <sup>3</sup>
4050300528496	Shipping carton box 12	375 mm x 245 mm x 253 mm	1865.00 g	23.24 dm <sup>3</sup>
4050300528472	Shipping carton box 12	375 mm x 245 mm x 253 mm	1865.00 g	23.24 dm <sup>3</sup>
4050300528458	Shipping carton box 12	375 mm x 245 mm x 253 mm	1865.00 g	23.24 dm <sup>3</sup>
4050300646268	Shipping carton box 12	368 mm x 330 mm x 319 mm	2727.00 g	38.74 dm <sup>3</sup>
4050300528557	Shipping carton box 12	375 mm x 320 mm x 328 mm	2787.00 g	39.36 dm <sup>3</sup>
4050300528533	Shipping carton box 12	375 mm x 320 mm x 328 mm	2787.00 g	39.36 dm <sup>3</sup>
4050300528519	Shipping carton box 12	375 mm x 320 mm x 328 mm	2787.00 g	39.36 dm <sup>3</sup>
4050300646282	Shipping carton box 12	375 mm x 320 mm x 328 mm	2787.00 g	39.36 dm <sup>3</sup>
4050300528618	Shipping carton box 12	375 mm x 320 mm x 328 mm	2787.00 g	39.36 dm <sup>3</sup>
4050300528595	Shipping carton box 12	237 mm x 320 mm x 328 mm	1713.60 g	24.88 dm <sup>3</sup>
4050300528571	Shipping carton box 12	375 mm x 320 mm x 328 mm	2695.00 g	39.36 dm <sup>3</sup>

The mentioned product code describes the smallest quantity unit which can be ordered. One shipping unit can contain one or more single products. When placing an order, for the quantity please enter single or multiples of a shipping unit.

---

## REFERENCES / LINKS

For more information on the system guarantee and the terms and conditions of the guarantee visit

- ▶ [www.ledvance.com/system-guarantee](http://www.ledvance.com/system-guarantee)

---

## DISCLAIMER

Subject to change without notice. Errors and omission excepted. Always make sure to use the most recent release.