

PRODUCT DATASHEET

HE CHIP CONTR 28 W/62

LUMILUX CHIP control T5 | Tubular fluorescent lamps 16 mm, yellow, with G5 base



AREAS OF APPLICATION

- Microchip fabrication plants
- Where UV and blue components have to be reduced to the absolute minimum
- Industry
- Print shops

PRODUCT BENEFITS

- Excellent UV filter
- The life of the sleeve is the same as the average lamp life

PRODUCT FEATURES

- Excellent filter at 500 nm
- Long average lifetime: up to 24,000 h (with QUICKTRONIC ECG)
- Dimmable



TECHNICAL DATA

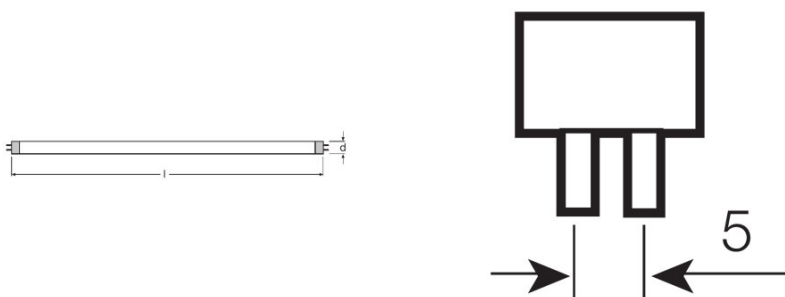
Electrical data

Rated lamp efficacy (HF data 25 °C)	Under clarification by authority and standardization body
Rated wattage	27.90 W
Nominal wattage	28.00 W

Photometrical data

Rated luminous flux	1600 lm
Luminous flux at 25 °C	1830 lm
Luminous flux at 35 °C	2040 lm
Light color	62
Nominal luminous flux	1600 lm
Light color (designation)	Yellow
Rated LLMF at 2,000 h	0.95
Rated LLMF at 4,000 h	0.93
Rated LLMF at 6,000 h	0.92
Rated LLMF at 8,000 h	0.90
Rated LLMF at 12,000 h	0.90
Rated LLMF at 16,000 h	0.90
Rated LLMF at 20,000 h	0.89
Luminous flux	1600 lm

Dimensions & weight



Tube diameter	16 mm
Length	1149 mm
Length with base excl. base pins/connection	1149.00 mm
Diameter	16.0 mm
Maximum diameter	16.0 mm

Temperatures & operating conditions

Rated ambient temp.w.max.luminous flux	35.0 °C
---	---------

Lifespan

Service life	19000 h ¹⁾
Lifespan	24000 h ¹⁾
Rated lamp survival factor at 2,000 h	0.99
Rated lamp survival factor at 4,000 h	0.99
Rated lamp survival factor at 6,000 h	0.99
Rated lamp survival factor at 8,000 h	0.99
Rated lamp survival factor at 12,000 h	0.99
Rated lamp survival factor at 16,000 h	0.97
Rated lamp survival factor at 20,000 h	0.85
Operation mode LLMF/LSF	HF
Rated lamp life time	24000 h
Nominal lamp life time	24000 h

¹⁾ With preheat ECG

Additional product data

Base (standard designation)	G5
Mercury content	1.9 mg
Show WEEE picto	Yes
Product remark	Suitable for ECG operation only/Lamp designed for internal luminaire temperatures of 30...40 °C; optimum luminous flux achieved at 35 °C

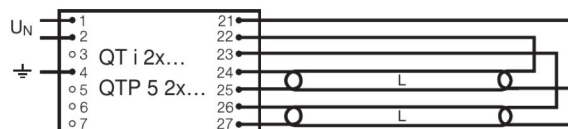
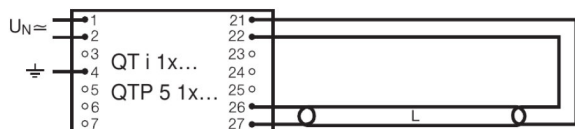
Capabilities

Suitable for indoor	Yes
----------------------------	-----

Certificates & standards

Energy efficiency class	A
Energy consumption	31 kWh/1000h

Wiring Diagram



Wiring diagram

Wiring diagram

SYSTEM GUARANTEE

- OSRAM System+ Guarantee in combination with OSRAM ECGs

EQUIPMENT / ACCESSORIES

- Suitable for operation on electronic and conventional control gears

SAFETY ADVICE

Lamps with plastic sleeves, ambient temperature range: -10...+80 °C

Lamps with plastic sleeves, maximum shelf life: 5 years at 0...30 °C

Lamps with plastic sleeves must be replaced after average lifetime (B50) has been reached

In case of lamp breakage: www.ledvance.com/brokenlamp

Under standard conditions acc. IEC (free burning, 25 - 40°C ambient temperature) a typical increase of the emitted radiation power in the wavelength range < 500 nm up to 6 mW/klm per 10,000 hours of operation was determined. This corresponds to approx. 0.2% of the total emitted radiation power. This increase depends on the operation conditions.

For example for a T5 HO lamp at 80°C ambient temperature an increase of the emitted radiation power in the wavelength range < 500 nm of up to 50 mW/klm per 10,000 hours of operation can be observed. This corresponds to approx. 2% of the total emitted radiation power.

For applications in photo sensitive areas, routine maintenance is necessary. This must include verification of the amount of short wavelength light emitted, and, if required, lamp replacement.

LOGISTICAL DATA

Product code	Packaging unit (Pieces/Unit)	Dimensions (length x width x height)	Gross weight	Volume
4008321233424	Unpacked 1	1160 mm x 17 mm x 23 mm	151.00 g	0.45 dm ³
4008321233431	Shipping carton box 10	1192 mm x 92 mm x 43 mm	1711.00 g	4.72 dm ³

The mentioned product code describes the smallest quantity unit which can be ordered. One shipping unit can contain one or more single products. When placing an order, for the quantity please enter single or multiples of a shipping unit.

REFERENCES / LINKS

For more information on the system guarantee and the terms and conditions of the guarantee visit

▶ www.ledvance.com/system-guarantee

DISCLAIMER

Subject to change without notice. Errors and omission excepted. Always make sure to use the most recent release.