

# PRODUCT FAMILY DATASHEET

## Basic T5 Short EL

Tubular fluorescent lamps 16 mm, short, for emergency lighting, with G5 base



---

### AREAS OF APPLICATION

- Public buildings
- Industry
- Shops
- Supermarkets and department stores

---

### PRODUCT BENEFITS

- Very good luminous flux maintenance throughout the life of the lamp
- Optimized for emergency power operation
- Slim and compact

---

### PRODUCT FEATURES

- Suitable for emergency power operation

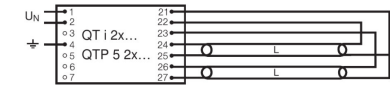
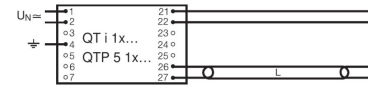
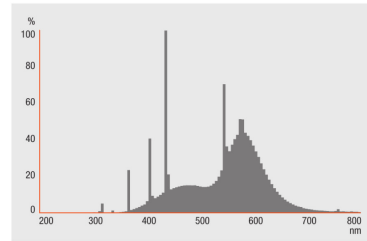


TECHNICAL DATA

Product description	Electrical data	Photometrical data							Dimensions & weight		Temperatures & operating conditions	Lifespan
	Nominal wattage	Color rendering index Ra	Luminous flux at 25 °C	Color temperature	Light color (designation)	Color temperature	Luminous flux	Color rendering index Ra	Tube diameter	Length with base excl. base pins/connection	Rated ambient temp.w. max.luminous flux	Lifespan
Emergency Lighting 6 W/640	6.00 W	≥60	270 lm	4000 K	Cool White	4000 K	270 lm	≥60	16 mm	212.00 mm	35.0 °C	8000 h <sup>1)</sup>
Emergency Lighting 8 W/640	8.00 W	≥60	385 lm	4000 K	Cold White	4000 K	385 lm	≥60	16 mm	288.00 mm	35.0 °C	8000 h <sup>1)</sup>

Product description	Additional product data		Certificates & standards	
	Base (standard designation)	Show WEEE picto	Energy efficiency class	Energy consumption
Emergency Lighting 6 W/640	G5	Yes	A	7 kWh/1000h
Emergency Lighting 8 W/640	G5	Yes	A	8 kWh/1000h

<sup>1)</sup> With CCG/LLCG



Emergency Lighting 6 W/640,  
Emergency Lighting 8 W/640

Emergency Lighting 6 W/640,  
Emergency Lighting 8 W/640

Emergency Lighting 6 W/640,  
Emergency Lighting 8 W/640

Emergency Lighting 6 W/640,  
Emergency Lighting 8 W/640



Die Zuleitungen 3 und 4 sollen so kurz wie möglich sein

Emergency Lighting 8 W/640

---

**SYSTEM GUARANTEE**

OSRAM System+ Guarantee in combination with OSRAM ECGs

---

**SAFETY ADVICE**

In case of lamp breakage: [www.ledvance.com/brokenlamp](http://www.ledvance.com/brokenlamp)

---

**APPLICATION ADVICE**

For more detailed application information and graphics please see product datasheet.

---

**LOGISTICAL DATA**

Product code	Packaging unit (Pieces/Unit)	Dimensions (length x width x height)	Gross weight	Volume
4008321152398	Shipping carton box 25	248 mm x 115 mm x 105 mm	824.50 g	2.99 dm <sup>3</sup>
4050300606651	Shipping carton box 25	320 mm x 116 mm x 105 mm	973.10 g	3.90 dm <sup>3</sup>

The mentioned product code describes the smallest quantity unit which can be ordered. One shipping unit can contain one or more single products. When placing an order, for the quantity please enter single or multiples of a shipping unit.

---

**DISCLAIMER**

Subject to change without notice. Errors and omission excepted. Always make sure to use the most recent release.