

# PRODUCT DATASHEET

## L 13 W/827

LUMILUX T5 Short | Tubular fluorescent lamps 16 mm, short, with G5 base



---

### AREAS OF APPLICATION

- Shops
- Supermarkets and department stores
- Public buildings

---

### PRODUCT BENEFITS

- Ideal for cost-effective creative illumination and decoration
- Very good luminous flux maintenance throughout the life of the lamp
- Slim and compact

---

### PRODUCT FEATURES

- Good color rendering group: 1B ( $R_a$ : 80...89)
- Average lifetime: up to 10,000 h (with QUICKTRONIC ECG)



**TECHNICAL DATA**

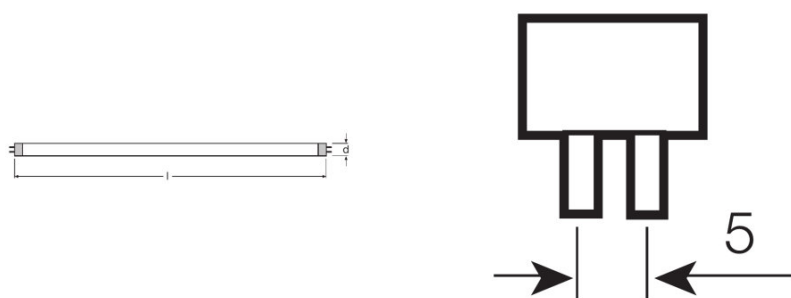
Electrical data

Rated lamp efficacy (HF data 25 °C)	Under clarification by authority and standardization body
Rated wattage	13.00 W
Nominal wattage	13.00 W

Photometrical data

Rated lamp efficacy (standard condition)	73 lm/W
Color rendering index Ra	≥80
Rated luminous flux	950 lm
Luminous flux at 25 °C	950 lm
Light color	827
Rated color temperature	2700 K
Nominal luminous flux	950 lm
Light color (designation)	LUMILUX INTERNA
Rated LLMF at 2,000 h	0.80
Rated LLMF at 4,000 h	0.74
Rated LLMF at 6,000 h	0.71
Rated LLMF at 8,000 h	0.69
Color temperature	2700 K
Luminous flux	950 lm
Color rendering index Ra	≥80

Dimensions & weight



Tube diameter	16 mm
Length	517.0 mm
Length with base excl. base pins/connection	517.00 mm
Diameter	16.0 mm
Maximum diameter	16.0 mm

## Temperatures &amp; operating conditions

<b>Rated ambient temp.w.max.luminous flux</b>	35.0 °C
---	---------

## Lifespan

<b>Lifespan</b>	8000 h <sup>1)</sup>
<b>Rated lamp survival factor at 2,000 h</b>	0.99
<b>Rated lamp survival factor at 4,000 h</b>	0.99
<b>Rated lamp survival factor at 6,000 h</b>	0.95
<b>Rated lamp survival factor at 8,000 h</b>	0.81
<b>Operation mode LLMF/LSF</b>	HF
<b>Rated lamp life time</b>	10000 h
<b>Nominal lamp life time</b>	10000 h

<sup>1)</sup> With CCG/LLCG

## Additional product data

<b>Base (standard designation)</b>	G5
<b>Mercury content</b>	2.5 mg
<b>Show WEEE picto</b>	Yes

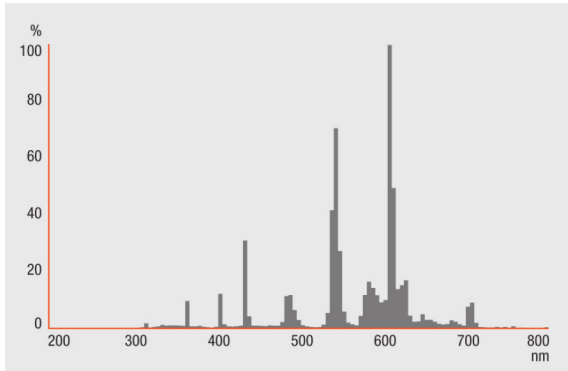
## Capabilities

<b>Suitable for indoor</b>	Yes
----------------------------	-----

## Certificates &amp; standards

<b>Energy efficiency class</b>	A
<b>Energy consumption</b>	15 kWh/1000h

## Light Distribution

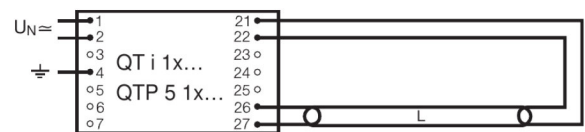


Spectral power distribution

## Wiring Diagram

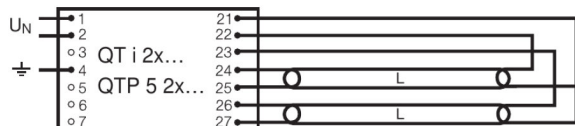


Die Zuleitungen 3 und 4 sollen so kurz wie möglich sein



Wiring diagram

Wiring diagram



Wiring diagram

**SYSTEM GUARANTEE**

OSRAM System+ Guarantee in combination with OSRAM ECGs

**SAFETY ADVICE**

In case of lamp breakage: [www.ledvance.com/brokenlamp](http://www.ledvance.com/brokenlamp)

**LOGISTICAL DATA**

Product code	Packaging unit (Pieces/Unit)	Dimensions (length x width x height)	Gross weight	Volume
4050300008967	Sleeves 1	537 mm x 20 mm x 24 mm	62.00 g	0.26 dm <sup>3</sup>
4050300608013	Shipping carton box 25	546 mm x 114 mm x 109 mm	1634.00 g	6.78 dm <sup>3</sup>
4050300325750	Sleeves 1	533 mm x 19 mm x 19 mm	61.00 g	0.19 dm <sup>3</sup>
4050300325767	Folding carton box 10	550 mm x 39 mm x 86 mm	548.80 g	1.84 dm <sup>3</sup>
4050300972916	Shipping carton box 10	540 mm x 51 mm x 105 mm	758.00 g	2.89 dm <sup>3</sup>

The mentioned product code describes the smallest quantity unit which can be ordered. One shipping unit can contain one or more single products. When placing an order, for the quantity please enter single or multiples of a shipping unit.

**DISCLAIMER**

Subject to change without notice. Errors and omission excepted. Always make sure to use the most recent release.