

PRODUCT DATASHEET

L 6 W/930

LUMILUX DE LUXE T5 Short | Tubular fluorescent lamps 16 mm, short, with G5 base



AREAS OF APPLICATION

- Shops
- Supermarkets and department stores
- Public buildings
- Ideal where color rendering is an important factor

PRODUCT BENEFITS

- Excellent color rendering
- Ideal for cost-effective creative illumination and decoration
- Very good luminous flux maintenance throughout the life of the lamp
- Slim and compact

PRODUCT FEATURES

- Average lifetime: up to 10,000 h (with QUICKTRONIC ECG)
- Very good color rendering group: 1A ($R_a \geq 90$)



TECHNICAL DATA

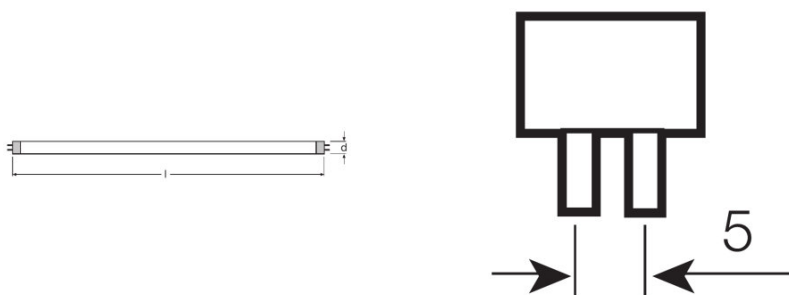
Electrical data

Rated lamp efficacy (HF data 25 °C)	Under clarification by authority and standardization body
Rated wattage	6.00 W
Nominal wattage	6.00 W

Photometrical data

Rated lamp efficacy (standard condition)	43 lm/W
Color rendering index Ra	≥90
Rated luminous flux	260 lm
Light color	930
Rated color temperature	3000 K
Nominal luminous flux	260 lm
Light color (designation)	LUMILUX DE LUXE Warm White
Rated LLMF at 2,000 h	0.80
Rated LLMF at 4,000 h	0.74
Rated LLMF at 6,000 h	0.71
Rated LLMF at 8,000 h	0.69
Color temperature	3000 K
Luminous flux	260 lm
Color rendering index Ra	≥90

Dimensions & weight



Tube diameter	16 mm
Length	212.1 mm
Length with base excl. base pins/connection	212.00 mm
Diameter	16.0 mm
Maximum diameter	16.0 mm

Temperatures & operating conditions

Rated ambient temp.w.max.luminous flux	35.0 °C
---	---------

Lifespan

Lifespan	10000 h ¹⁾
Rated lamp survival factor at 2,000 h	0.99
Rated lamp survival factor at 4,000 h	0.99
Rated lamp survival factor at 6,000 h	0.95
Rated lamp survival factor at 8,000 h	0.81
Operation mode LLMF/LSF	HF
Rated lamp life time	10000 h
Nominal lamp life time	10000 h

¹⁾ With preheat ECG

Additional product data

Base (standard designation)	G5
Mercury content	2.5 mg
Show WEEE picto	Yes

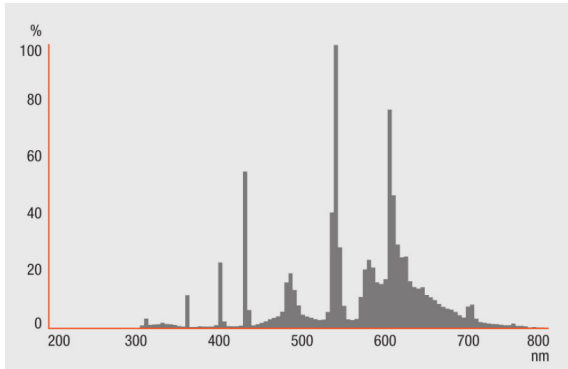
Capabilities

Dimmable	Yes
Suitable for indoor	Yes

Certificates & standards

Energy efficiency class	B
Energy consumption	7 kWh/1000h

Light Distribution



Spectral power distribution

Wiring Diagram



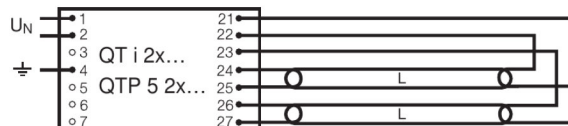
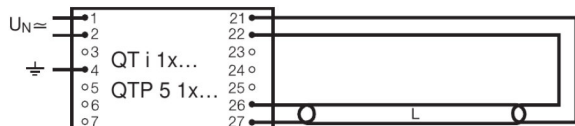
Die Zuleitungen 3 und 4 sollen so kurz wie möglich sein



Die Zuleitungen 3 und 4 sollen so kurz wie möglich sein

Wiring diagram

Wiring diagram



Wiring diagram

Wiring diagram

SYSTEM GUARANTEE

OSRAM System+ Guarantee in combination with OSRAM ECGs

SAFETY ADVICE

In case of lamp breakage: www.ledvance.com/brokenlamp

LOGISTICAL DATA

Product code	Packaging unit (Pieces/Unit)	Dimensions (length x width x height)	Gross weight	Volume
4050300015880	Sleeves 1	230 mm x 18 mm x 20 mm	27.00 g	0.08 dm ³
4050300244198	Shipping carton box 25	247 mm x 112 mm x 106 mm	736.00 g	2.93 dm ³

The mentioned product code describes the smallest quantity unit which can be ordered. One shipping unit can contain one or more single products. When placing an order, for the quantity please enter single or multiples of a shipping unit.

REFERENCES / LINKS

For more information on the system guarantee and the terms and conditions of the guarantee visit

▶ www.ledvance.com/system-guarantee

DISCLAIMER

Subject to change without notice. Errors and omission excepted. Always make sure to use the most recent release.