

PRODUCT DATASHEET

HE ES 13 W/865

LUMILUX T5 HE ES | Tubular fluorescent lamps 16 mm, high efficiency, energy saver, with G5 base



AREAS OF APPLICATION

- Public buildings
- Offices
- Shops
- Supermarkets and department stores
- Industry
- Outdoor applications only in suitable luminaires

PRODUCT BENEFITS

- Up to 10 % energy savings compared to standard T5 HE LUMILUX lamps
- Excellent economy and efficiency
- Pay-back time less than 1 year
- High luminous efficacy

PRODUCT FEATURES

- Luminous efficacy: up to 114 lm/W
- Very good lumen maintenance: 90 % throughout the service lifetime of the lamp
- Long average lifetime: up to 24,000 h (with QUICKTRONIC ECG)
- Good color rendering group: 1B (R_a : 80...89)
- Dimmable



TECHNICAL DATA

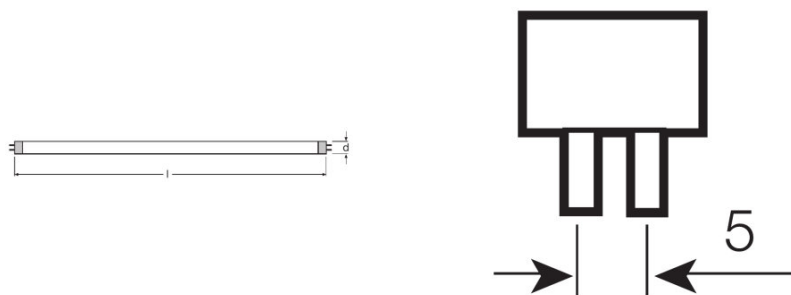
Electrical data

Rated lamp efficacy (HF data 25 °C)	84 lm/W
Rated wattage	12.50 W
Nominal wattage	12.50 W

Photometrical data

Color rendering index Ra	≥80
Rated luminous flux	1050 lm
Luminous flux at 25 °C	1050 lm
Luminous flux at 35 °C	1300 lm
Light color	865
Rated color temperature	6500 K
Nominal luminous flux	1050 lm
Light color (designation)	LUMILUX Cool Daylight
Rated LLMF at 2,000 h	0.96
Rated LLMF at 4,000 h	0.95
Rated LLMF at 6,000 h	0.94
Rated LLMF at 8,000 h	0.93
Rated LLMF at 12,000 h	0.91
Rated LLMF at 16,000 h	0.90
Rated LLMF at 20,000 h	0.89
Color temperature	6500 K
Luminous flux	1050 lm
Color rendering index Ra	≥80

Dimensions & weight



Tube diameter	16 mm
Length	549.0 mm

Length with base excl. base pins/connection	549.00 mm
Diameter	16.0 mm
Maximum diameter	16.0 mm

Temperatures & operating conditions

Rated ambient temp.w.max.luminous flux	35.0 °C
---	---------

Lifespan

Service life	19000 h ¹⁾
Lifespan	24000 h ¹⁾
Rated lamp survival factor at 2,000 h	0.99
Rated lamp survival factor at 4,000 h	0.99
Rated lamp survival factor at 6,000 h	0.99
Rated lamp survival factor at 8,000 h	0.99
Rated lamp survival factor at 12,000 h	0.99
Rated lamp survival factor at 16,000 h	0.99
Rated lamp survival factor at 20,000 h	0.94
Operation mode LLMF/LSF	HF
Rated lamp life time	25000 h
Nominal lamp life time	25000 h

¹⁾ With preheat ECG

Additional product data

Base (standard designation)	G5
Mercury content	1.2 mg
Show WEEE picto	Yes
Product remark	For ECG operation only/Lamp designed for internal luminaire temperatures of 30...40 °C; optimum luminous flux achieved at 35 °C

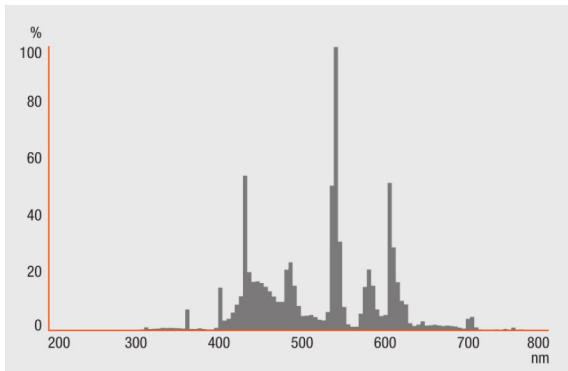
Capabilities

Dimmable	Yes
Suitable for indoor	Yes

Certificates & standards

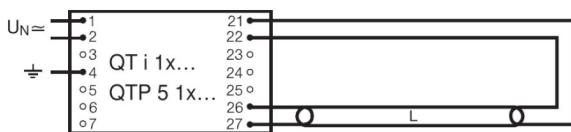
Energy efficiency class	A+
Energy consumption	14 kWh/1000h

Light Distribution

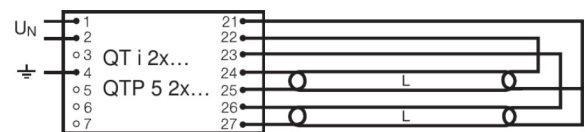


Spectral power distribution

Wiring Diagram



Wiring diagram



Wiring diagram

SYSTEM GUARANTEE

OSRAM System+ Guarantee in combination with OSRAM ECGs

SAFETY ADVICE

In case of lamp breakage: www.ledvance.com/brokenlamp

LOGISTICAL DATA

Product code	Packaging unit (Pieces/Unit)	Dimensions (length x width x height)	Gross weight	Volume
4008321733917	Sleeves 1	568 mm x 22 mm x 17 mm	50.00 g	0.21 dm ³
4008321733924	Shipping carton box 20	580 mm x 106 mm x 83 mm	1414.00 g	5.10 dm ³

The mentioned product code describes the smallest quantity unit which can be ordered. One shipping unit can contain one or more single products. When placing an order, for the quantity please enter single or multiples of a shipping unit.

REFERENCES / LINKS

For more information on the system guarantee and the terms and conditions of the guarantee visit

▶ www.ledvance.com/system-guarantee

DISCLAIMER

Subject to change without notice. Errors and omission excepted. Always make sure to use the most recent release.

LUMILUX T5 HE ES | Tubular fluorescent lamps 16 mm, high efficiency, energy saver, with G5 base

Product name	Product name ECG	EAN	Nominal current	Nominal wattage + Power loss	Luminous flux at 35 °C	Number of lighting outlets
HE ES 13 W/865	QT-FIT 5 1x14-35	4008321971234	0.07 A	15.00 W	1150 lm	1
	QT-FIT 5 2x14-35	4008321971258	0.13 A	29.00 W	1150 lm	2
	QT-FIT 5 3x14, 4x14	4008321971210	0.19 A	43.00 W	1150 lm	3
	QT-FIT 5 3x14, 4x14	4008321971210	0.25 A	55.00 W	1150 lm	4
	QTi 1x14/24/21/39 GII	4008321383334	0.07 A	15.00 W	1150 lm	1
	QTi 1x28/54/35/49 GII	4008321383358	0.07 A	15.00 W	1150 lm	1
	QTi 1x35/49/80 GII	4008321383372	0.07 A	15.00 W	1150 lm	1
	QTi 2x14/24/21/39 GII	4008321383396	0.125 A	29.00 W	1150 lm	2
	QTi 2x28/54/35/49 GII	4008321383419	0.125 A	29.00 W	1150 lm	2
	QTi 2x35/49/80 GII	4008321658951	0.16 A	30.00 W	1150 lm	2
	QTP5 1x14-35	4008321329035	0.075 A	15.00 W	1150 lm	1
	QTP5 2x14-35	4008321329073	0.13 A	28.00 W	1350 lm	2