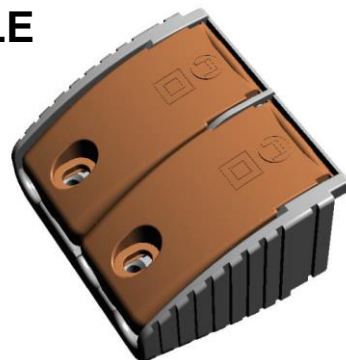


Light is OSRAM

OSRAM

## Product datasheet: OT CABLE CLAMP A-STYLE

OPTOTRONIC® OT CABLE CLAMP A-STYLE (strain relief) can be snapped onto the compact ECG and thus converts it into an ECG suitable for independent installation

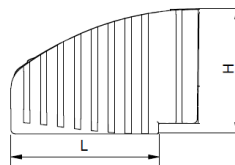
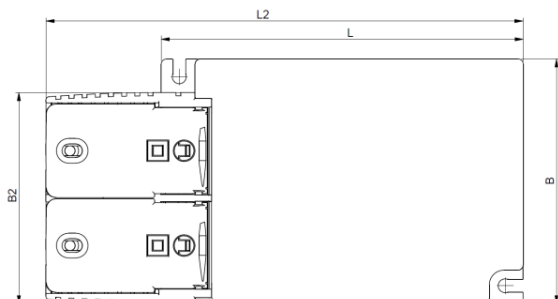


### Benefits

- Comfort space for wire assembling
- Two cable clamp flaps for separate access to primary and secondary side
- Only one screw per flap for easy and fast fixation of the cables
- Suitable for different cable types

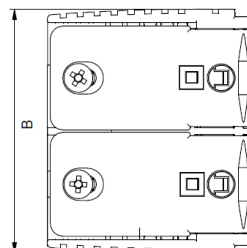
### Applications

Independent applications



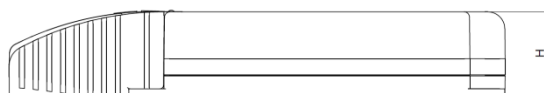
Cable Clamp A-style dimension

L	35mm
B	64.7mm
H	25mm

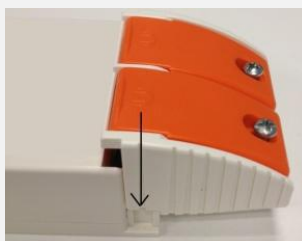


ECG with Cable Clamp A-style dimension

L	110mm
L2	145mm
B	75mm
B2	64.5mm
H	25mm



1. Match cable clamp with corresponding ECG (refer to table "Matching ECG" for details).



2. Snap cable clamp into ECG as shown.



3. Unscrew cover for wire installation.

## Electrical Specifications

	Item	Value	Unit	Remarks
<b>Basic Data</b>	Cable Jacket Diameter	7 – 11	mm	
	Dismantling of the cable	35	mm	Max.
	Weight	26	g	
<b>Tested cable types (acc. EN60598-1):</b>	NYM-J 5x1,5			Input side only
	NYM-J 4x1,5			Input side only
	NYM-J 3x1,5			Input side only
	H05 VV-F 3x1,5			Input side only
	H05 VV-F 3x1			Input side only
	H05 VV-F 2x1			Input side only
	H05 VV-F 3x0,75			Input side only
	H03 VV-F 3x0,75			Input side only
	NYM-J 5x1,5			Output side only
	NYM-J 4x1,5			Output side only
	NYM-J 3x1,5			Output side only
	H05 VV-F 3x1,5			Output side only
	H05 VV-F 3x1			Output side only
	H05 VV-F 2x1			Output side only
	H05 VV-F 3x0,75			Output side only
	H03 VV-F 3x0,75			Output side only
<b>Matching ECG</b>	<b>Product name</b>	<b>EAN 10</b>	<b>EAN 40</b>	<b>Pieces/box</b>
	OTi DALI 50/220-240/1A4 LT2 FAN	4052899919433	4052899919501	20

EAN40	Product name	Pcs/ box
4052899089587	OT Cable clamp A-style	20

### Disclaimer (Engineering Samples: B-Samples and C-Samples)

This product is a demonstration model from our development laboratories made available for your information only.  
The model is not binding in respect to its fitness for use, i.e. service life, luminous flux, color temperature and performance.  
Prior to production the design, including dimensions, is subject to modification.  
You will, therefore, appreciate that at this stage of development we are unable to assume any liability also for damages which may be caused by this product.  
Should you urgently require binding information for the preparation of construction data for your applications, please contact our marketing department.

OSRAM GmbH

Head Office:

Marcel-Breuer-Strasse 6  
80807 Munich, Germany  
Phone +49 89 6213-0

www.osram.com

**OSRAM**