

LINEARlight FLEX – SLIM TRACK System

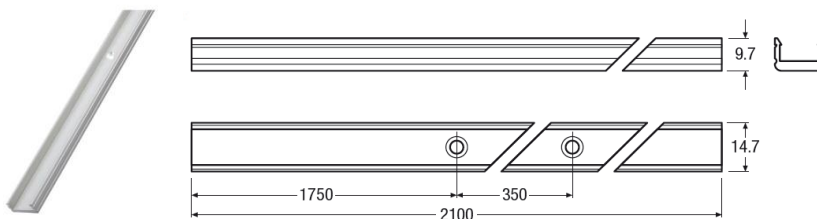
TECHNICAL DATASHEET / APPLICATION ADVICES



BENEFITS

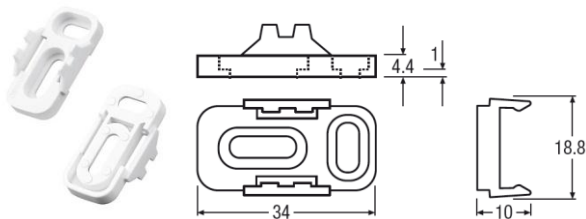
- Light, universal aluminium track system for
 - LINEARlight FLEX
 - LINEARlight FLEX Protect
 - VALUE FLEX
- Extremely slim form factor
- Easy & quick installation
- Serves as heat sink
- Specially designed with mechanical fixing for LINEARlight FLEX Protect modules
→ No additional clips needed
- Stable metall-case and accessories allow for versatile use
- Simple assembling and installation of the LED modules either individually or as strip lighting

Tracks, covers & accessories



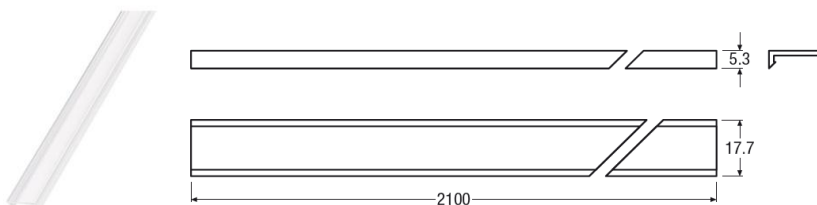
Aluminium U Profile SLIM TRACK

Product	LF-LTS-2100-SLIM-TRACK
Order Code	4008321978981
Material	Anodized Aluminium
Mounting options	1) LF-LTS-MB 2) Screw holes along complete track @ 35cm distance



Mounting brackets for SLIM TRACK

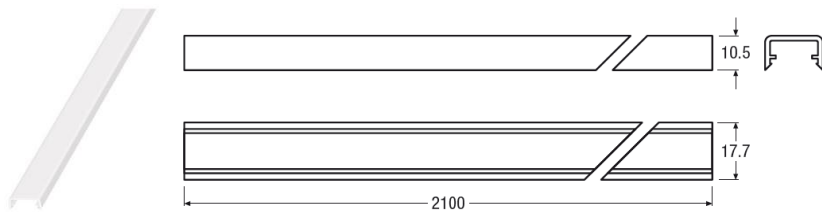
Product	LF-LTS-MB
Order Code	4008321979025
Material	PBT



Clear cover for protection

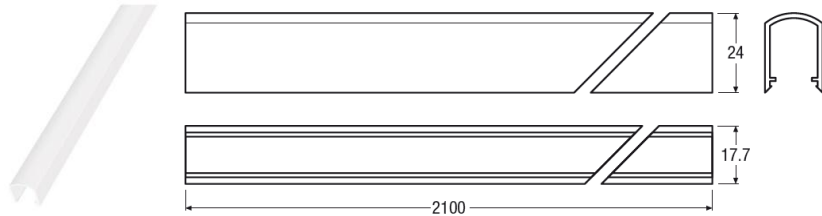
Product	LF-LTS-COVER-C
Order Code	4008321790187
Material	PC

Due to the special conditions of manufacturing processes of LED, the typical data of technical parameters can only reflect statistical figures and do not necessarily correspond to the actual parameters of each single product which could differ from the typical data. Subject to change without notice. Errors and omissions excepted. **Version: 2014-06-11**



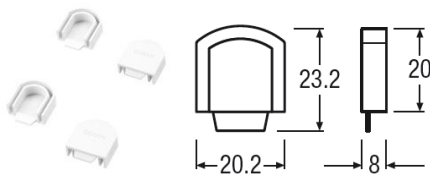
Diffuse cover for LF06S & LF06S-P

Product	LF-LTS-COVER-S
Order Code	4008321790200
Material	PC



Diffuse cover (general)

Product	LF-LTS-COVER-D
Order Code	4008321979001
Material	PC

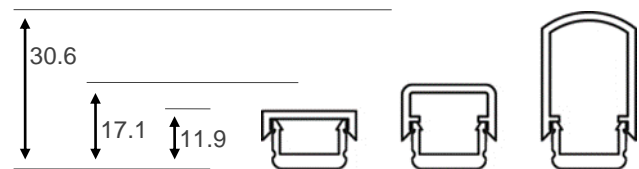


Silicone Endcap for LF-LTS-COVER-D

Product	LF-LTS-ENDCAP
Order Code	4008321979049
Material	Silicone

Assembly Information and Safety Information

- For installation, peel off protection film and clean the surface accurately.
- Stick the module into the track and assemble the brackets on the wall.
- Pay attention to standard ESD precautions when installing LINEARlight Flex products.
- The Track can also be mounted directly to the mounting surface by means of countersunk screws.
- Clip the track into the mounting brackets.
- Assembly without undue pressure and extensive jacking on LED module.



Logistical Information / Order Kits

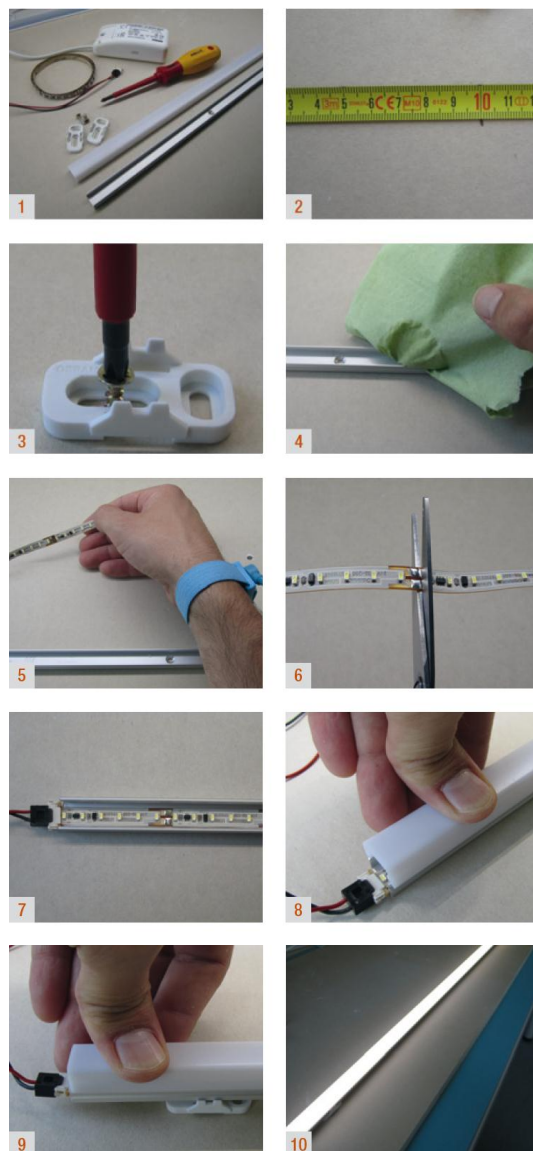
Product	EAN	Shipping units
LF-LTS-2100 SLIM TRACK	4008321978981	40
LF-LTS-COVER-DIFFUSE	4008321979001	40
LF-LTS-COVER-CLEAR	4008321790187	40
LF-LTS-COVER-SHORTPITCH	4008321790200	40
LF-LTS-MB MOUNTING BRACKET	4008321979025	20
	4008321979032	160
	4008321979049	35
LF-LTS-ENDCAP	4008321979056	280

Due to the special conditions of manufacturing processes of LED, the typical data of technical parameters can only reflect statistical figures and do not necessarily correspond to the actual parameters of each single product which could differ from the typical data. Subject to change without notice. Errors and omissions excepted. **Version: 2014-06-11**

Step-by-step assembly with the SLIM Track System

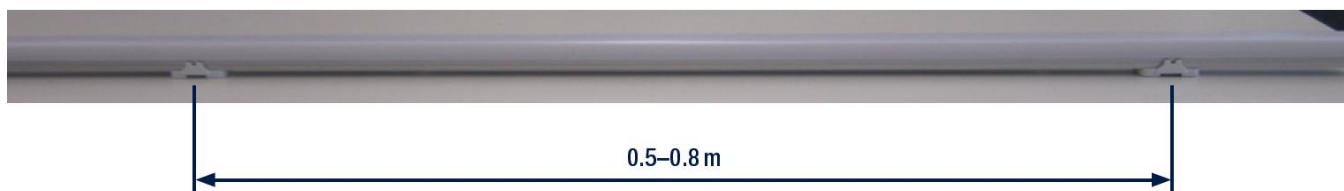
As an example, the assembly of the SLIM Track System is shown with the unprotected module LINEARlight Flex ShortPitch (LF06S). Follow the same procedure for the protected modules.

1. Components for assembly:
 - a. Track (LF-LTS-2100 SLIM Track)
 - b. Cover (e.g. LF-LTS COVER S)
 - c. Mounting brackets (LF-LTS-MB)
 - d. M3 screws and screwdriver
2. Measure the distance and mark the fixing positions for the mounting brackets.
3. Fix the mounting brackets at the marked positions by means of a screw driver.
4. Clean the surface of the aluminum track by means of a multi-purpose cleaner.
5. Use a personal earthing system in order to avoid damaging effects due to electrostatic discharge.
6. Cut the module to the required length.
7. Connect the module to the LF-2PIN (observe the polarity) and stick the module into the SLIM Track System. Do not apply pressure on the LEDs!
8. Take the cover and gently push it down onto the aluminum track.
9. Click the track with the cover into the mounting brackets.
10. Perform final operating test.



Using the mounting brackets (LF-LTS-MB)

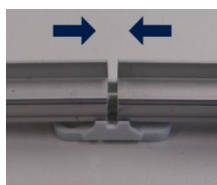
It is recommended to use a mounting bracket every 0.5–0.8 m, i.e. for one SLIM Track System with a total length of 2.1 m, four mounting brackets are sufficient.



It is also possible to use the LF-LTS-MB as a connector for two or more SLIM Track Systems:



Place the tracks into the mounting bracket



Slide tracks to the middle



Completed connection of two SLIM Tracks

Due to the special conditions of manufacturing processes of LED, the typical data of technical parameters can only reflect statistical figures and do not necessarily correspond to the actual parameters of each single product which could differ from the typical data. Subject to change without notice. Errors and omissions excepted. **Version: 2014-06-11**

Matching LINEARLIGHT FLEX modules

X	LF-LTS-2100-SLIM-TRACK	4008321978981	X
X	LF-LTS-MB	4008321979025	X
X	LF-LTS-COVER-C	4008321790187	X
	LF-LTS-COVER-S	4008321790200	X
X	LF-LTS-COVER-D	4008321979001	
X	LF-LTS-ENDCAP	4008321979049	



	Product reference	EAN
POWER	LF06P2-W5F-827	4008321971272
	LF06P2-W5F-830	4008321971296
	LF06P2-W5F-840	4008321971319
	LF06P2-W5F-850	4008321971791
	LF06P2-W5F-865	4008321971333
ADVANCED	LF06A-W3F-827	4008321973986
	LF06A-W3F-830	4008321973993
	LF06A-W3F-840	4008321974006
	LF06A-W3F-850	4008321974013
	LF06A-W3F-865	4008321974020
	LF05A2-B3	4052899924123
	LF05A2-R3	4052899924086
	LF05A2-T3	4052899924116
	LF05A2-Y3	4052899924109
	LF05A2-O3	4052899924093
ECO	LF05E2-W2F-827	4008321971357
	LF05E2-W2F-830	4052899928435
	LF05E2-W2F-840	4052899928442
	LF05E2-W2F-865	4008321971418
	LF05E-B2	4008321955425
	LF05E-R1	4008321955418
	LF05E-T2	4008321955449
COLORMIX	LF05E-Y1	4008321955432
	LF05CA2-RGB3	4008321851536
POWER PROTECT	LF05CE-RGB1	4008321593375
	LF06P2-W4F-830-P	4008321790668
	LF06P2-W4F-840-P	4008321789945
ADVANCED PROTECT	LF06P2-W4F-876-P	4008321789969
	LF06A-W3F-830-P	4008321789983
	LF06A-W3F-840-P	4008321790125
	LF06A-W3F-870-P	4008321790149
ECO PROTECT	LF05A-B3-P	4008321617804
	LF05E-W2F-830-P	4008321616432
	LF05E-W2F-840-P	4008321621184
	LF05E-W2F-860-P	4008321616777
	LF05E-B2-P	4008321616913
	LF05E-R1-P	4008321616937
	LF05E-T2-P	4008321616951
COLORMIX PROTECT	LF05E-Y1-P	4008321616975
	LF05CA-RGB3-P	4008321977205
	LF05CE-RGB1-P	4008321977182

	Product reference	EAN
SHORTPITCH	LF06S-W3F-827	4008321973887
	LF06S-W3F-830	4008321973894
	LF06S-W3F-840	4008321973900
	LF06S-W3F-850	4008321973917
	LF06S-W3F-865	4008321973924
SHORTPITCH PROTECT	LF06S-830-P	4052899091979
	LF06S-840-P	4052899092150
	LF06S-854-P	4052899092273
	LF06S-876-P	4052899092396

Contacts & Information

OSRAM GmbH

Marcel-Breuer-Straße 6
80807 Munich, Germany
www.osram.com
+49.89.6213-0

Sales and technical support is given by the local OSRAM subsidiaries.

On the OSRAM website all subsidiaries are listed with complete address and phone numbers.

OSRAM LED Systems
OSRAM catalogue
General information

www.osram.com/led-systems
<http://catalog.osram.com>
www.osram.com

Due to the special conditions of manufacturing processes of LED, the typical data of technical parameters can only reflect statistical figures and do not necessarily correspond to the actual parameters of each single product which could differ from the typical data. Subject to change without notice. Errors and omissions excepted. **Version: 2014-06-11**