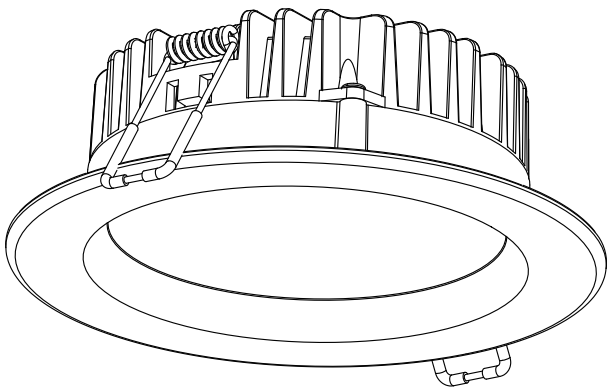
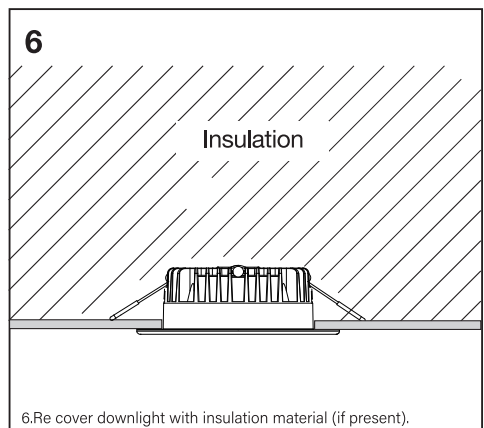
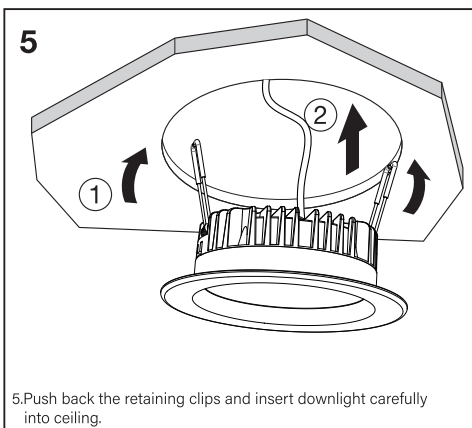
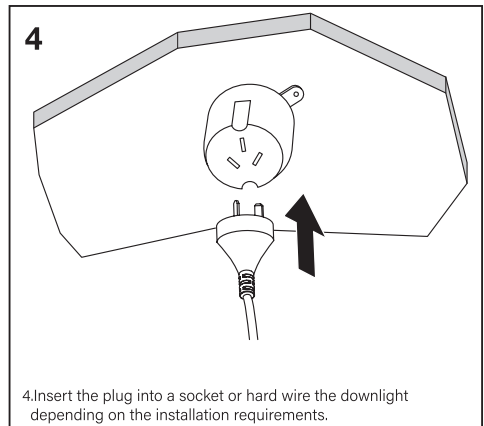
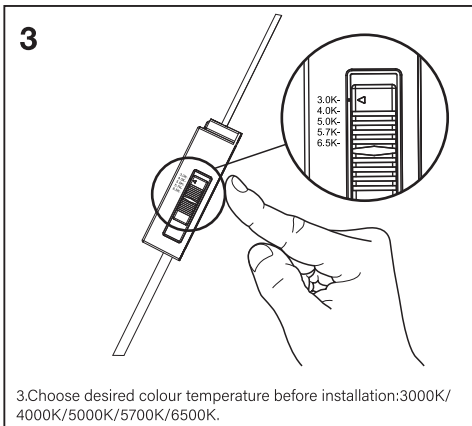
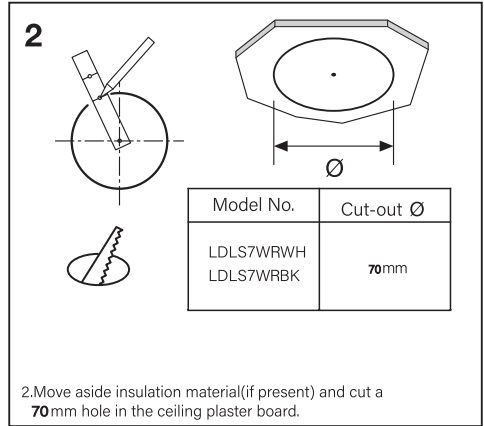
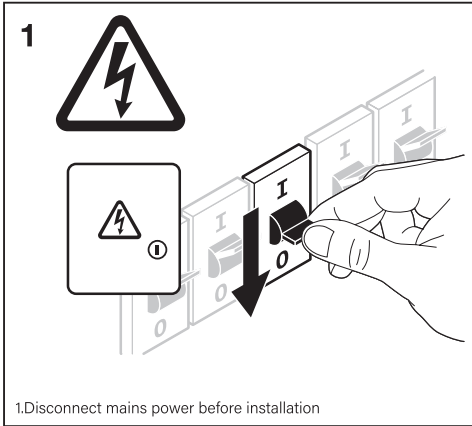


PENTALITE SLIM DOWNLIGHT



Model	W	Cut out [mm]	K	lm	Vac	Hz
LDLS7WRWH	7 W	70	3000K/4000K/ 5000K/5700K/ 6500K	700	220~240VAC	50/60Hz
LDLS7WRBK	7 W	70		700		



WARNINGS:

- This product must be installed by a licensed electrician strictly in accordance with the current revision of AS/NZS 3000 - Electrical Installations (Australian/New Zealand Wiring Rules).
- Avoid touching the LEDs.
- Please do not attempt to disassemble or change the construction of the luminaire or replace any of the parts to avoid the possibility of injury or product failure.
- Please keep this manual for future reference.
- This product is designed for indoor use only. It is not intended for installation in wet areas or where the location is exposed to the elements.
- This luminaire is designed for ceiling installation only. Do not install on wall.
- The light source contained in this luminaire shall only be replaced by the manufacturer or service agent or a similar qualified person.
- Please note that the fixture is equipped with standard surge protection only. To protect the fixture from sags, surges, and lightning strikes, additional surge protectors must be deployed on the primary side.

WARRANTY AGAINST DEFECTS:

Your LED **PENTALITE SLIM DOWNLIGHT** fitting from LEDVANCE comes with a product warranty (5 years) for quality assurance, the terms and conditions of which are set out in this document. The Warranty applies exclusively to LED Light Fittings from LEDVANCE purchased within Australia and New Zealand for normal domestic or commercial use. The Warranty is offered to you by:

LEDVANCE Pty Ltd
Unit 3, 83 Derby St
Silverwater, NSW, 2128
Phone contact: 1300 467 726
Email address: technical.au@ledvance.com



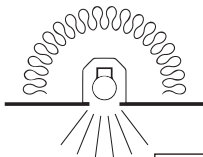
**MUST BE INSTALLED
BY A LICENSED
ELECTRICIAN**

Caution:

When in the ceiling space in contact with insulation materials and other potentially hazardous substances, wear appropriate, maintained and correctly-fitted Personal Protection Equipment (PPE), including: a half-face (class P1 or P2) disposable dust respirator in accordance with Australian/New Zealand Standard 1715, a head-covering, and goggles to avoid eye irritation, long-sleeved loose-fitting clothing and gloves to minimise skin contact, plus appropriate footwear.

Insulation Rating IC-4

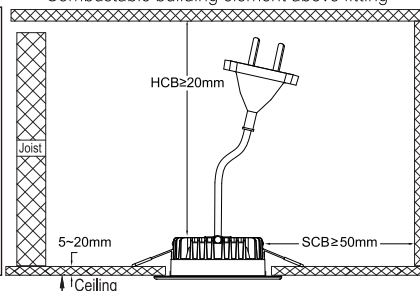
IC - 4



The LEDVANCE LED **PENTALITE SLIM DOWNLIGHT** has been tested in accordance with AS/NZS 60598.2.2:2016, for an insulation classification of IC-4. IC-4 recessed luminaires can be abutted and covered by normally flammable materials including fixed building insulation (refer to figure 1). The temperature of the fitting does not exceed 90°C when building insulation abuts or covers the luminaire.

Combustable building element above fitting

RISK OF FIRE - Required clearance from structural members and building elements
SCB=50mm HCB=20mm
SCI=0mm MIC=0mm
SCB - Minimum distance from the side of the recessed luminaire to normally flammable building element.
HCB - Minimum distance from the top of the recessed luminaire to any normally flammable building element.
SCI - Minimum distance from the side of the recessed luminaire to any building insulation.
MIC - Minimum distance from the top of the recessed luminaire to any building insulation.



For further information on dimming performance and for a list of preferred dimmers please see www.ledvance.com.au

LEDVANCE Pty Ltd
Unit 3, 83 Derby St
Silverwater, NSW, 2128
Australia
Ph +61 29481 8399
www.ledvance.com.au



www.ledvance.com.au