

FLEX CONTROL UNIT IoT DALI-2 HCL TW

Quick Start Guide DALI-2 IoT Remote Access Service

Please read this guide in full before using the Remote Access service.

Table of Contents

Introduction	page 1
Web Application Remote Access	page 2
Download File	page 3
Change File	page 4
Upload File	page 5
Summary	page 7
Glossary	page 7

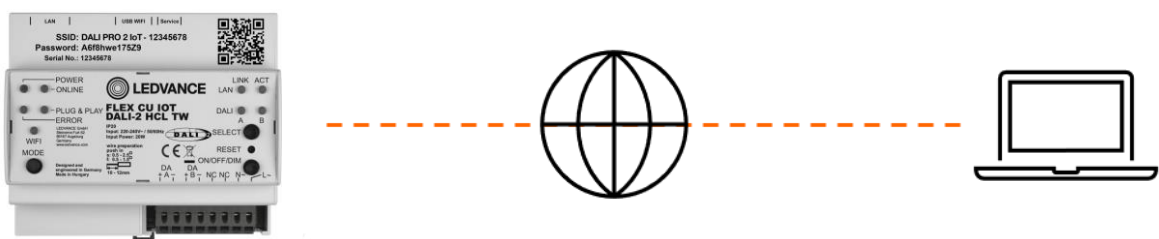
Introduction

Remote Access enables adaptations to your FLEX CU IoT DALI-2 HCL TW Lighting System without the necessity of an on-site visit.

These adjustments are executed by altering the configuration file stored within the controller. Typically, this configuration file is generated during the commissioning process, which takes place on-site.

To make adaptations to this configuration while not physically on-site, you can use our Web Application Remote Access to change the configuration file remotely.

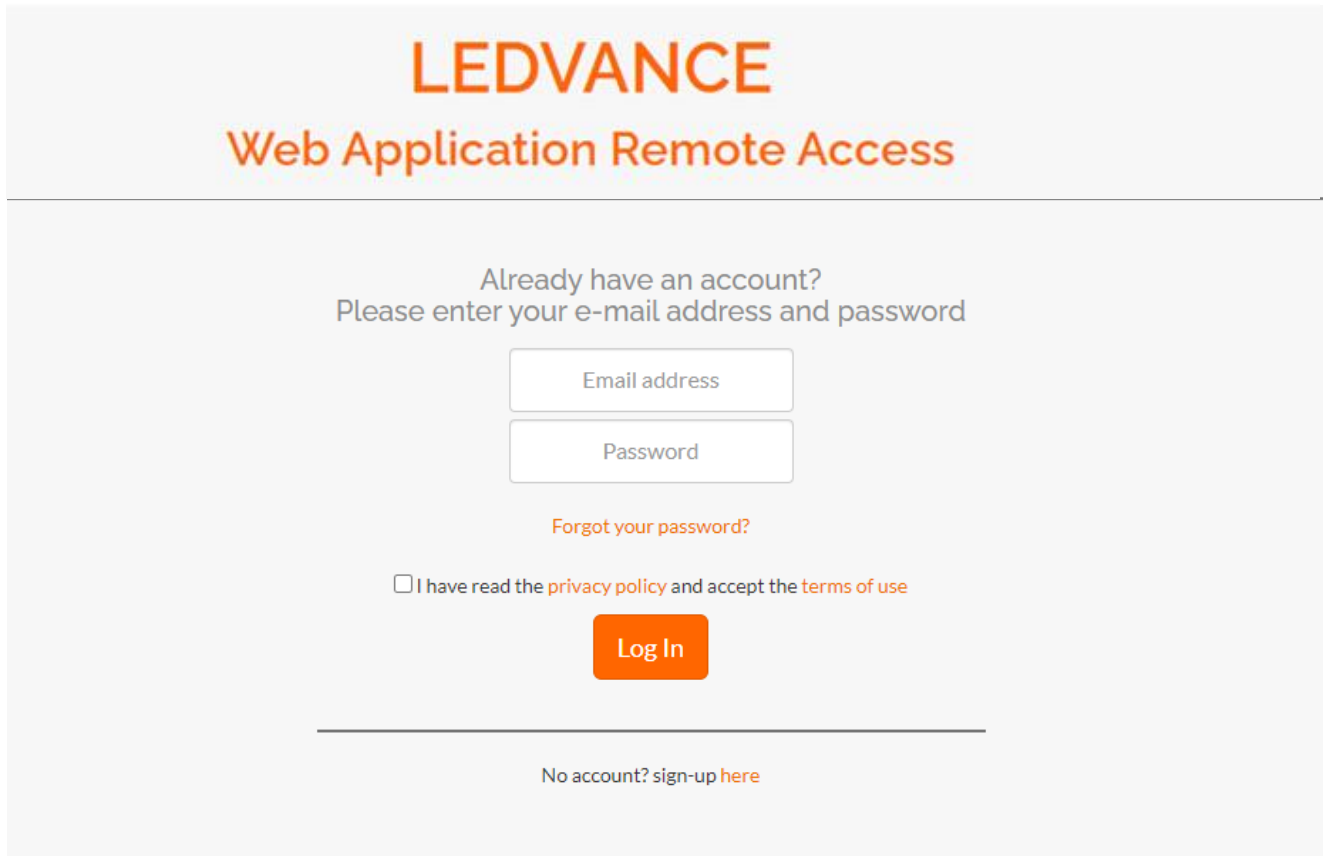
Using the Web Application Remote Access, you can effortlessly download the configuration file from the controller, make necessary alterations using the DALI IoT Config tool, and subsequently upload the updated file back onto the controller.



Web Application Remote Access

Use a web-browser and type the following URL: <https://flexcuiot.dalipro.io/>

The Log In screen will appear:



The login screen features the LEDVANCE logo at the top, followed by the title 'Web Application Remote Access'. Below this, a heading asks 'Already have an account?' and prompts the user to 'Please enter your e-mail address and password'. There are two input fields: 'Email address' and 'Password'. A link for 'Forgot your password?' is located below the password field. A checkbox is present with the text 'I have read the privacy policy and accept the terms of use'. A prominent orange 'Log In' button is centered below the checkbox. At the bottom, a horizontal line separates the login section from a link that says 'No account? sign-up here'.

If you haven't created an account yet, please sign up by following the provided instructions.

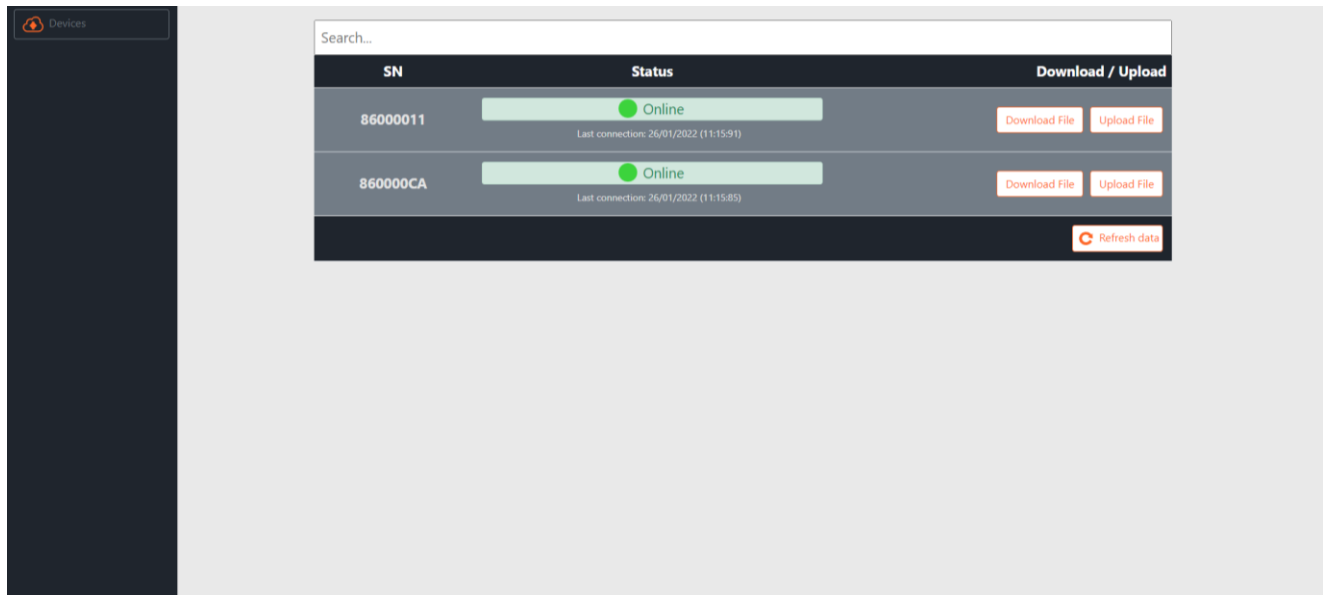
If you already have an account, log in with your e-mail address and password and you will be re-directed to the start page.

Once on the start page, you will be presented with two options:

1. To exit the Web Application, simply click on the logout button located in the upper-right corner.
2. To continue using the Web Application, click on "Devices" in the upper-left corner.

To continue, please click on the “Devices” in the left-upper corner.

Next, you will see a list of FLEX CU IoT DALI-2 HCL TW devices that have the remote access feature enabled. These devices are identified by their Serial Number, denoted under the header labeled "SN."

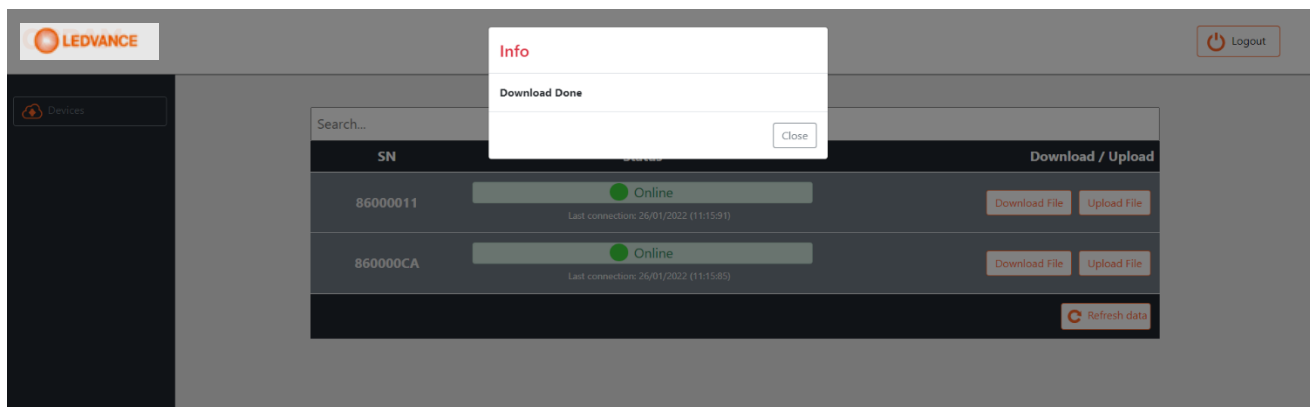


If you do not see a list of “Devices” it means that you have not linked controllers to your account yet. To link a specific controller to your account, you must activate the remote-access service on the FLEX CU IoT DALI-2 HCL TW controller.

The remote-access feature is by default enabled in the controller. In case you don’t see it, you may need to update your controller to the latest firmware version. For that follow the DALI IoT WebUI user instructions which is available here: <https://www.ledvance.com/flex-control-unit-iot-dali-2-hcl-tw>.

Download File

Click on the button “Download” and a status file will be downloaded to your computer under FLEXCUIOT-<serialnumber>.osrrd. For example: FLEXCUIOT-86000011.osrrd



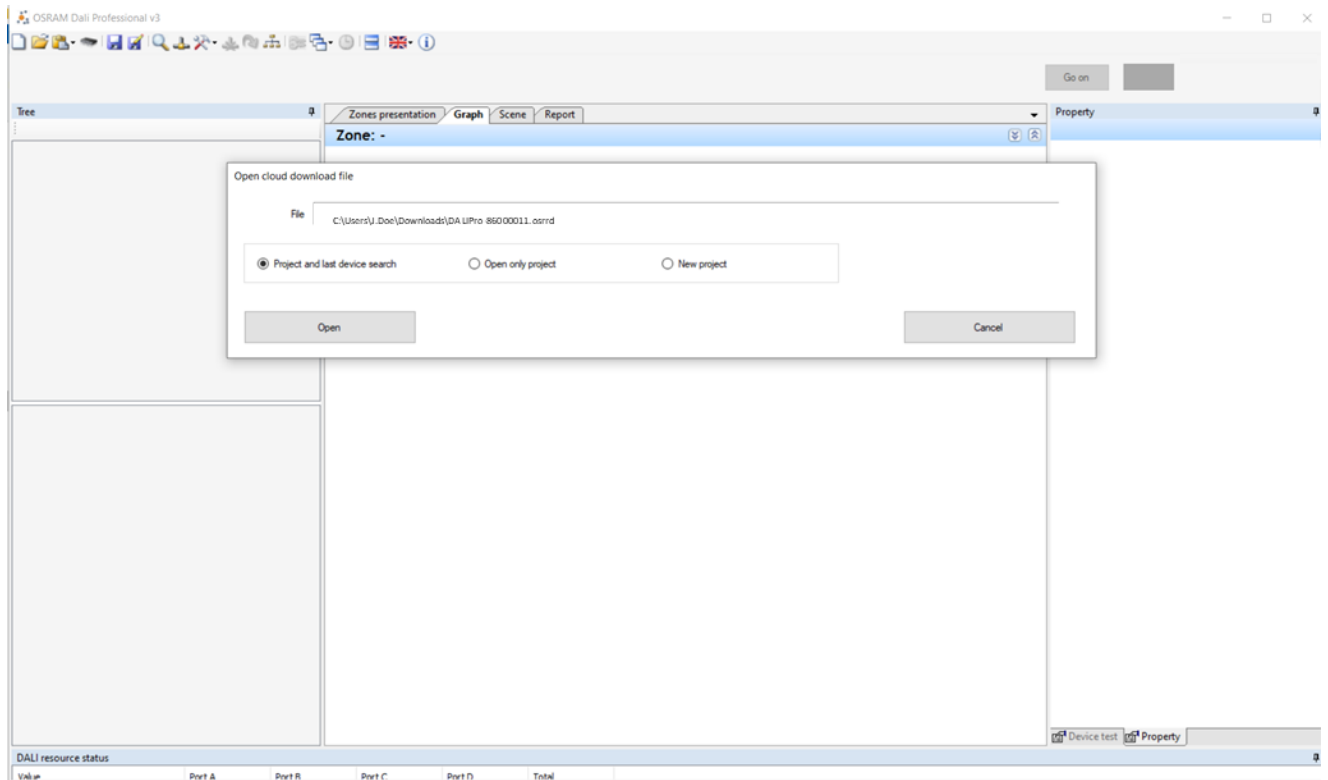
Open this file with your DALI IoT Config tool.

Note: Remote Access available as of version 3.1.10.

Change File

Start the DALI IOT CONFIG tool and open the file.
[for example, FLEXCUIOT-<serialnumber.osrrd]

Select “Project and last device search” and click on the button “Open”

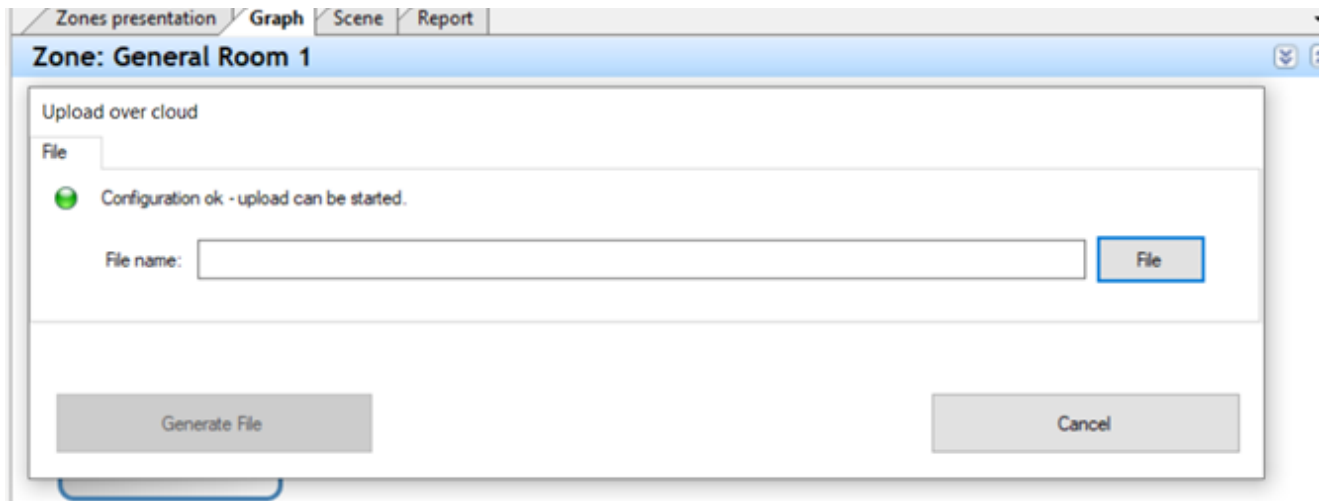


A pop-up window with information will appear. Close this pop-up window.

Make changes to the configuration as you normally do with the DALI IoT Config tool.

Use the upload button  to save a configuration file on your computer.

After saving, a pop-up window appears called “Upload over cloud”



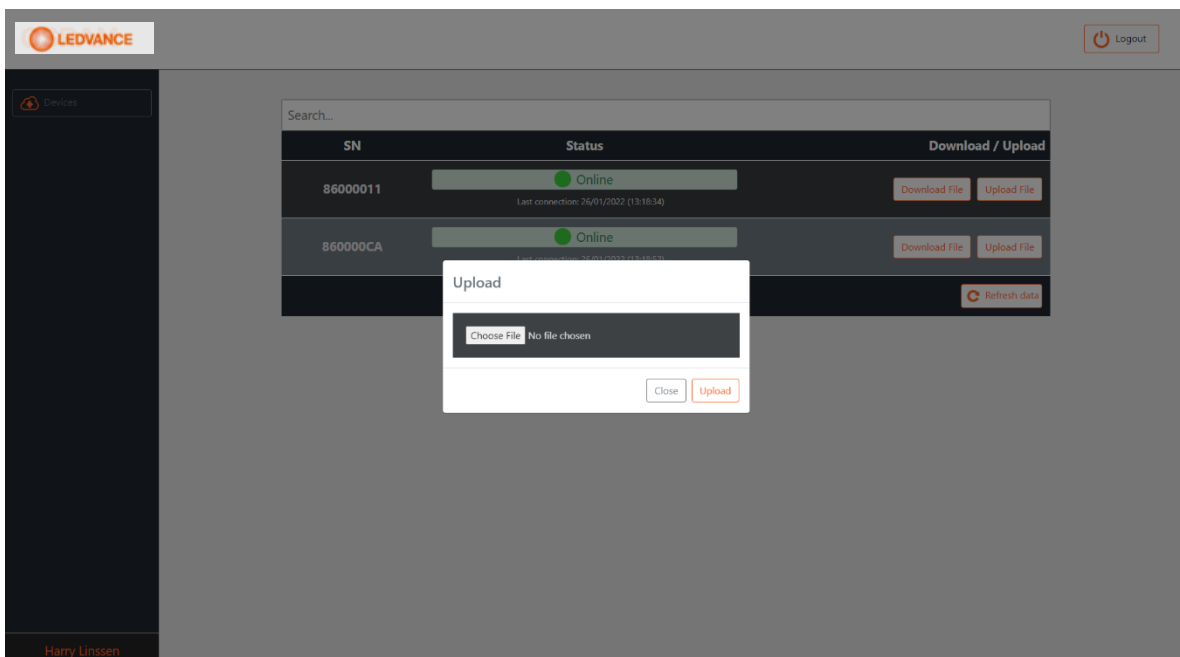
Assign a filename. [for example: Upload-86000011] and click on the button “Generate File”

A file is saved to your computer which can be uploaded to the controller via remote access.

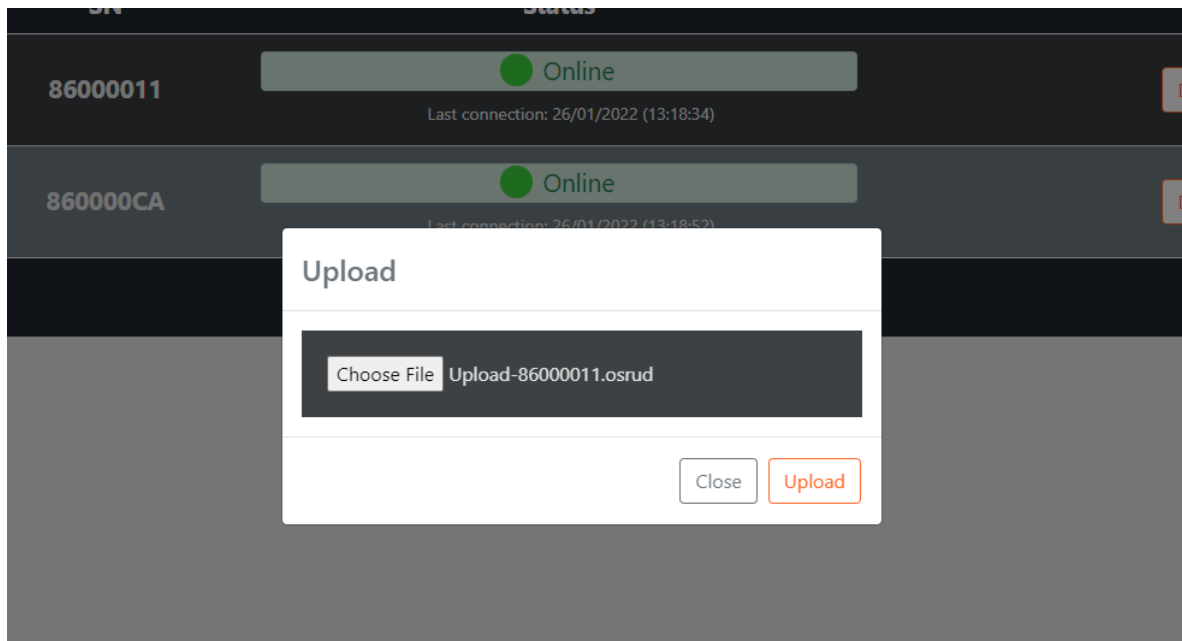
Close the DALI IoT Config tool and return to the Web Application Remote Access.

Upload File

Click on the button “Upload File”. [Note: pay attention to select the correct controller]

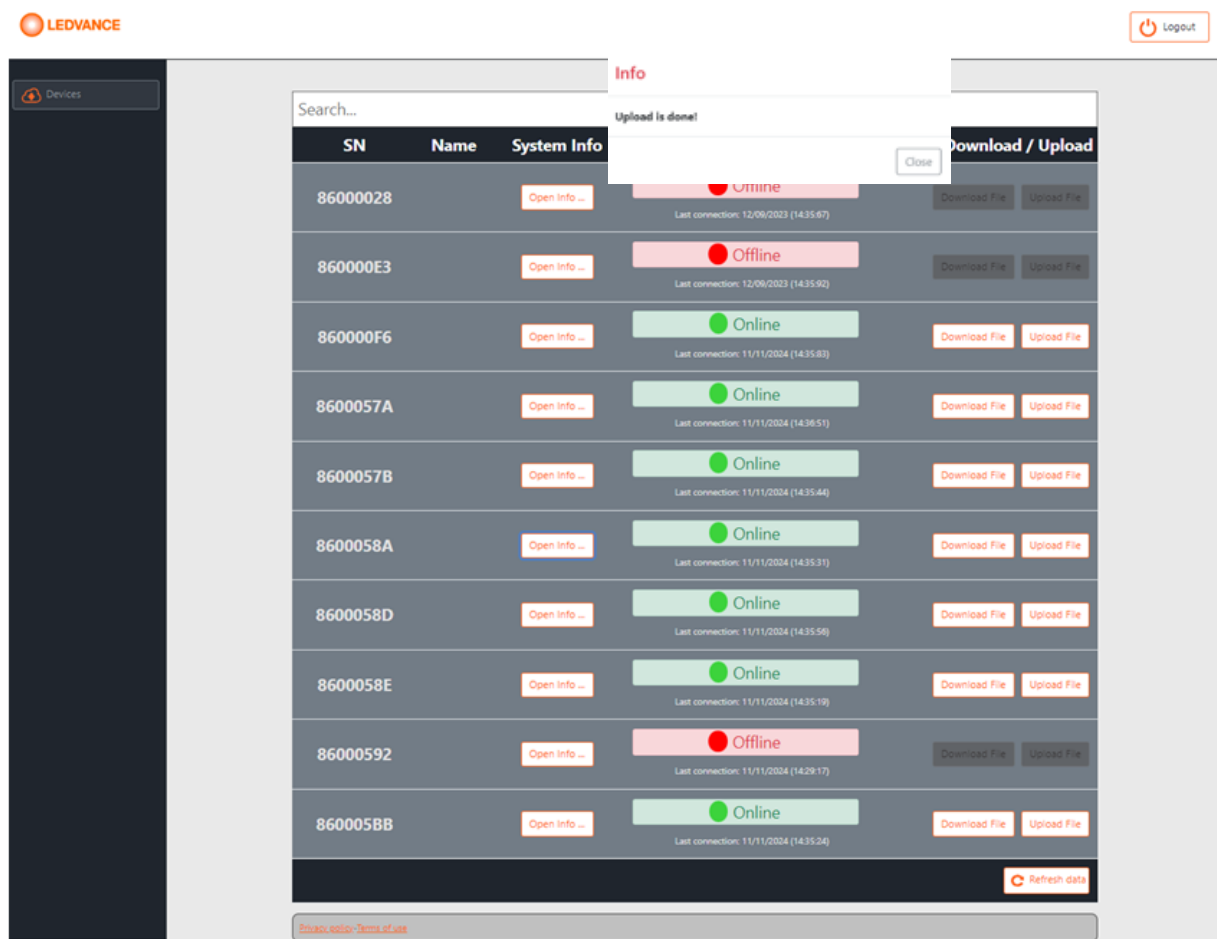


Select the file you want to upload and click on the button “Upload”



A pop-up window will confirm a successful uploading of the file.

Close the Web Application. “YOU ARE DONE“



Summary

Two steps to set-up “Remote Access” [these steps need to be done only once]

- Step 1: Create an account
Step 4: Activate Remote Access service on FLEX CU IoT DALI-2 HCL TW

Five Steps to use “Remote Access”

- Step 1: Log in
Step 2: Download File
Step 3: Change File
Step 4: Upload File
Step 5: Log Out

Glossary

Activation Status	Information on whether the remote access service is activated or not
Commissioning	Initial set up of the lighting system i.e. programming of devices
Configuration File	Program stored in the memory of the controller
PC TOOL	Windows based program to support commissioning and programming
Remote Access Service	A service from LEDVANCE to download and upload files remotely
Serial Number	Unique number to identify FLEX CU IoT DALI-2 HCL TW controllers
Upload File	An information file to be uploaded to the controller via remote access
Web-browser	Commercial web-browser such as Chrome, Safari, etc.
WebUI	A Graphical User interface based on a built-in web-browser

LEDVANCE GmbH

Parkring 1-5
85748 Garching, Germany
contact@ledvance.com
www.ledvance.com