

LEDVANCE Poles

ROUND TAPERED STEEL POLES

Application

LEDVANCE round tapered steel poles are offered in 15', 20' and 25' heights and mounting configurations include tenon top, drilled for two or three fixtures. The poles will cover all of your mounting needs from post tops to floodlights to area lights, ideal for parking lots, parks and pedestrian walkways, outdoor storage areas, small sports lighting and any open space needing illumination.

Benefits and Features

- Poles available in 3 heights – 15', 20' and 25'
- Fabricated from the highest grade structural steel
- Conforms to ASTM-A-500 Grade B
- Minimum yield strength of 46,000 PSI

Warranty

- 5-year
- NLB Trusted Warranty Program

Specifications

- Round Tapered Steel Poles with powder coat paint; Black finish is standard for 15' and 20' poles; Bronze finish is standard for 20' and 25' poles
- Anchor Bolts included
- Cast Iron 3" x 5" reinforced hand hole with cover and ground screw
- Drilled poles include black plastic pole cap
- Easily secured 2-piece base cover included
- Bolt circle template included

Installation

- Confirm maximum EPA and weight for pole
- EPAs are estimates and an engineer should be consulted for the specific application



Catalog #	Type
Project	
Comments	
Prepared by	

Ordering Guide

POLESRTS	2B	/	XX	11G	XXXXX	BX
Product Name	Generation		Height	Size	Mounting Configuration	BL = Black (15 and 20ft)
POLESRTS = Round Tapered Steel Poles	2B = Generation 2B		15 = 15 feet 20 = 20 feet 25 = 25 feet	11G = 11 Gauge	TT = Tenon Top D2180 = Drill 2 sides @ 180° D3120 = Drill 3 sides @ 120°	BZ = Bronze (20 and 25ft)

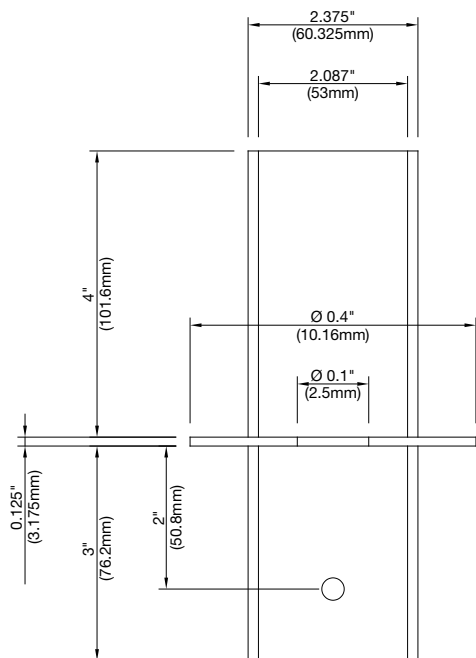
Ordering Information

Item Number	Ordering Abbreviation	Shape	Height (ft)	Size (In)	Mounting Configuration	Finish
66097	POLESRTS2B/15/11G/TT/BL	Round Tapered	15	11 Gauge	Tenon top	Black
66098	POLESRTS2B/15/11G/D2180/BL	Round Tapered	15	11 Gauge	Drill 2 sides @ 180°	Black
66099	POLESRTS2B/15/11G/D3120/BL	Round Tapered	15	11 Gauge	Drill 3 sides @ 120°	Black
66100	POLESRTS2B/20/11G/TT/BL	Round Tapered	20	11 Gauge	Tenon top	Black
66101	POLESRTS2B/20/11G/D2180/BL	Round Tapered	20	11 Gauge	Drill 2 sides @ 180°	Black
66102	POLESRTS2B/20/11G/D3120/BL	Round Tapered	20	11 Gauge	Drill 3 sides @ 120°	Black
66103	POLESRTS2B/20/11G/TT/BZ	Round Tapered	20	11 Gauge	Tenon top	Bronze
66104	POLESRTS2B/20/11G/D2180/BZ	Round Tapered	20	11 Gauge	Drill 2 sides @ 180°	Bronze
66105	POLESRTS2B/20/11G/D3120/BZ	Round Tapered	20	11 Gauge	Drill 3 sides @ 120°	Bronze
66106	POLESRTS2B/25/11G/TT/BZ	Round Tapered	25	11 Gauge	Tenon top	Bronze
66107	POLESRTS2B/25/11G/D2180/BZ	Round Tapered	25	11 Gauge	Drill 2 sides @ 180°	Bronze
66108	POLESRTS2B/25/11G/D3120/BZ	Round Tapered	25	11 Gauge	Drill 3 sides @ 120°	Bronze

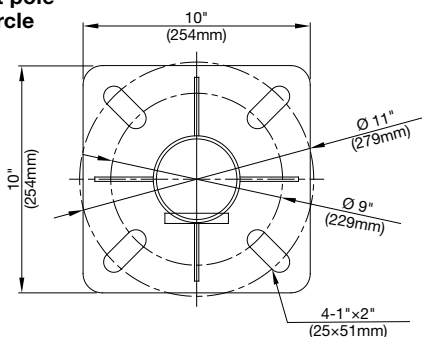
Physical Information

Pole Size	Shaft Diameter @ Base	Shaft Diameter at Top	Weight (lbs)	(A) Bolt Circle	(B) Base Size	(C) Base Thickness	Bolt Projection	Anchor Bolt Size
15ft Pole	5"	2.9"	103	9"-11" (229-279mm)	10" (254mm)	3/4" (19mm)	4"	M20 × 27 1/2"
20ft Pole	5.7"	2.9"	145	9"-11" (229-279mm)	10" (254mm)	3/4" (19mm)	4"	M20 × 27 1/2"
25ft Pole	6.4"	2.9"	187	10.5"-12" (279-305mm)	11" (279mm)	1"	4"	M22 × 33"

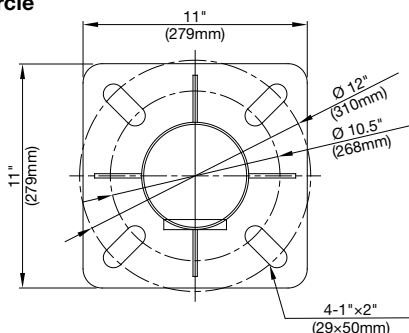
Tenon Top



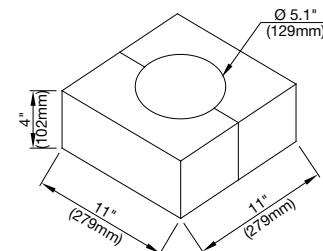
15-20ft pole bolt circle



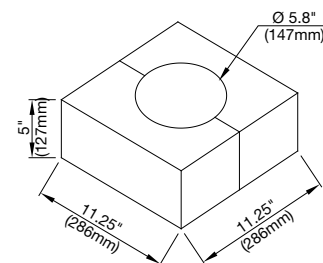
25ft pole bolt circle



15ft pole base cover



20-25ft pole base cover



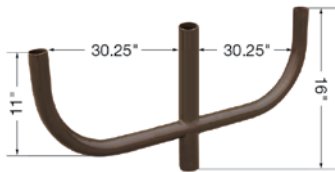
Ordering Information (Accessories)

Item Number	Ordering Abbreviation	Item Description	Compatibility
63319	POLESQS2B/DBLBULHORN/BZ	Double Bullhorn Bracket, Bronze Finish	Requires TT pole Types 66103, 66106
63320	POLESQS2B/TPLBULHORN/BZ	Triple Bullhorn Bracket, Bronze Finish	Requires TT pole Types 66103, 66106

Double Bullhorn
63319



Triple Bullhorn
63320



Available Wind Loading

Ordering Abbreviation	NAEDs	90 MPH	100 MPH	110 MPH	120 MPH	130 MPH	140 MPH
		EPA (ft²)	EPA (ft²)	EPA (ft²)	EPA (ft²)	EPA (ft²)	EPA (ft²)
POLESRTS2B/15/11G*	66097-66099	17.3	14.2	11.8	10	8.7	7.8
POLESRTS2B/20/11G*	66100-66105	11.9	9.8	8	6.8	5.8	5
POLESRTS2B/25/11G*	66106-66108	8.1	6.7	5.5	4.6	3.8	3.2

*For any mounting configuration or finish

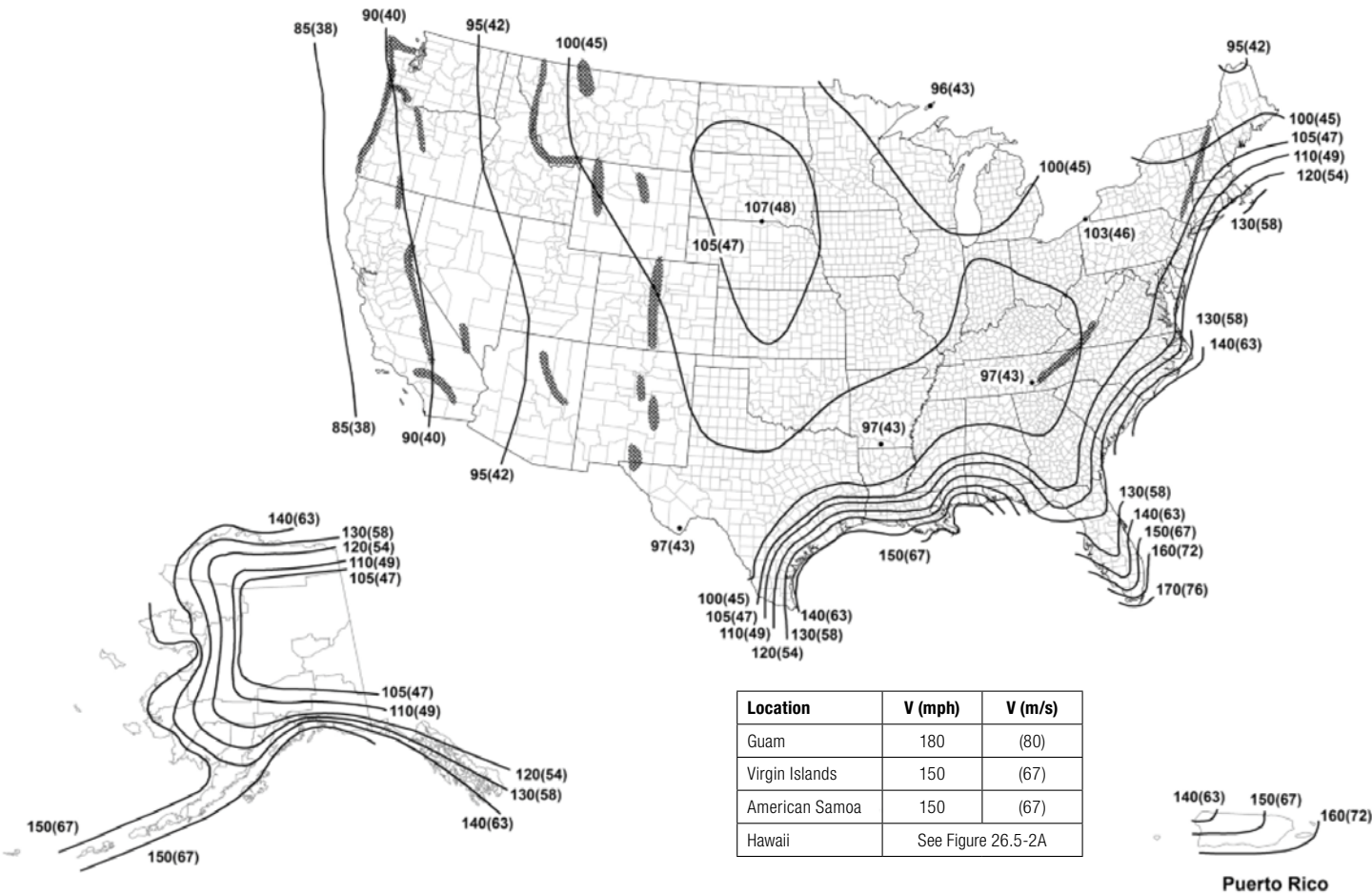
Ordering Abbreviation	NAEDs	90 MPH	100 MPH	110 MPH	120 MPH	130 MPH	140 MPH
		Weight (lbs)	Weight (lbs)	Weight (lbs)	Weight (lbs)	Weight (lbs)	Weight (lbs)
POLESRTS2B/15/11G*	66097-66099	433	355	294	319	218	194
POLESRTS2B/20/11G*	66100-66105	296	244	201	191	145	124
POLESRTS2B/25/11G*	66106-66108	203	167	137	115	96	79

*For any mounting configuration

Pole Loading

Luminaire Model	EPA (ft²)	Weight (lbs)
Post Top 1A	2.34	19.8
AREAFLD2A 80-150W (pole mount)	0.35	14.5
AREAFLD2A 200-300W (pole mount)	0.52	18.6
AREAFLD2A 80-150W (slipfitter mount)	1.14	14.5
AREAFLD2A 200-300W (slipfitter mount)	1.62	18.6
AREAFLD4A 100/190W (pole mount)	0.61	17.6
AREAFLD4A 290W (pole mount)	1.53	20.6
AREAFLD4A 100/190W (slipfitter mount)	0.7	17.6
AREAFLD4A 290W (slipfitter mount)	1.81	20.6
AREAFLD5A 80-150W (slipfitter mount)	1.32	7.9
AREAFLD5A 300W (slipfitter mount)	2.02	10.1
AREAFLD6A 80W (slipfitter mount)	1.6	15.8
AREAFLD6A 150W (slipfitter mount)	2.4	20.7
AREAFLD6A 300W (slipfitter mount)	3.3	26
FLOOD1A 15-35W	0.46	3.7
FLOOD1B 60-80W	0.68	6.3
FLOOD1C 105-140W	1.23	16.1
FLOOD1D 205-255W	1.74	17.6
FLOOD1E 290-330W	1.99	20.5
FLOODLT2A 30W	0.25	2.4
FLOODLT2A 60W	0.35	2.9
FLOODLT2A 140W	0.66	7.1
FLOODLT2A 300W	1.6	16.1
FLOODLT2A 470W	2.69	25.8

Wind Map



Notes: Dark shading indicates a special wind region.

- 1. Values are nominal design 3-s gust wind speeds in miles per hour (m/s) at 33 ft. (10 m) above ground for Exposure Category C.
- 2. Linear interpolation is permitted between contours. Point values are provided to aid with interpolation.
- 3. Islands, coastal areas, and land boundaries outside the last contour shall use the last wind speed contour.
- 4. Mountainous terrain, gorges, ocean promontories, and special wind regions shall be examined for unusual wind conditions.
- 5. Wind speeds correspond to approximately a 15% probability of exceedance in 50 years. (Annual Exceedance Probability = 0.00333, MRI = 300 years).
- 6. Location-specific basic wind speeds shall be permitted to be determined using www.atcouncil.org/windspeed.

LEDVANCE LLC
181 Ballardvale Street, Suite 203
Wilmington, MA 01887 USA
Phone 1-800-LIGHTBULB (1-800-544-4828)
www.ledvanceUS.com

LEDVANCE is a registered trademark.
All other trademarks are those of their respective owners.
Specifications subject to change without notice.



SCAN TO FOLLOW US
ON SOCIAL MEDIA

