

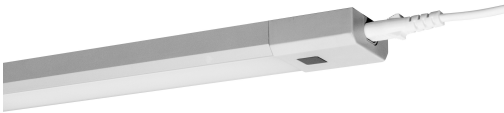
PRODUCT DATASHEET

LINEAR LED Slim RGBW 500

Linear LED Slim RGBW | High voltage undercabinet luminaires with RGBW technology

Areas of application

- Shelf and undercabinet lighting



Product benefits

- Direct connection to AC power supply thanks to integrated control gear
- Slim and sleek design
- Homogenous light distribution
- Easy and fast mounting on nearly every surface (adhesive tape or screws)

Product features

- Luminous flux: up to 350 lm
- Switch on and off, color changing and dimming via remote control
- Material: aluminum
- Color: silver
- Available in two lengths: 30 cm and 50 cm
- Connection of up to 10 luminaires (30 cm version) and up to 5 luminaires (50 cm version) possible



TECHNICAL DATA

Electrical data

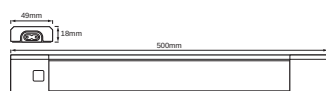
Nominal wattage	6.00 W
Nominal voltage	220...240 V
Mains frequency	50...60 Hz
Nominal current	70 mA
Power factor λ	> 0.5
Protection class	II
Operating mode	Integrated LED driver

Photometrical data

Luminous flux	350 lm
Luminous efficacy	58 lm/W
Color temperature	3000 K
Light color (designation)	Warm White
Color rendering index Ra	≥ 80
Standard deviation of color matching	≤ 6 sdcm
Beam angle	110 °

Dimensions & Weight

Length	500.00 mm
Width	49.00 mm
Height	18.00 mm
Product weight	430.00 g
Cable length	1500 mm



Materials & Colors

Product color	Gray
Housing color	Gray
Body material	Aluminum Polycarbonate (PC)

Cover material	Polycarbonate (PC)
Mercury content	0.0 mg

Application & Mounting

Ambient temperature range	-20...+40 °C
Temperature range at storage	-30...+70 °C
Type of connection	Plug type C (EU)
Type of protection	IP20
Dimmable	Yes
Mounting type	Surface
Mounting location	Cabinet undersides
LED module replaceable	Not replaceable

Lifespan

Lifespan L70/B50 at 25 °C	30000 h
Number of switching cycles	100000




Certificates & Standards

Standards	CE / RoHS / EAC / REACH
-----------	-------------------------

EQUIPMENT / ACCESSORIES

- External cable (1.5 m) included
- Fixed connector and flexible connecting cable included

DOWNLOAD DATA

DOWNLOAD DATA	
	User instruction LINEAR LED SLIM RGBW
	Tender documents Tender Text 4058075227675
	Declarations of conformity LINEAR LED SLIM

LOGISTICAL DATA

Product code	Packaging unit (Pieces/Unit)	Dimensions (length x width x height)	Gross weight	Volume
4058075227675	Folding box 1	41 mm x 71 mm x 629 mm	489.00 g	1.83 dm ³
4058075227682	Shipping box 8	645 mm x 303 mm x 98 mm	4951.00 g	19.15 dm ³

The mentioned product code describes the smallest quantity unit which can be ordered. One shipping unit can contain one or more single products. When placing an order, for the quantity please enter single or multiples of a shipping unit.

DISCLAIMER

Subject to change without notice. Errors and omission excepted. Always make sure to use the most recent release.